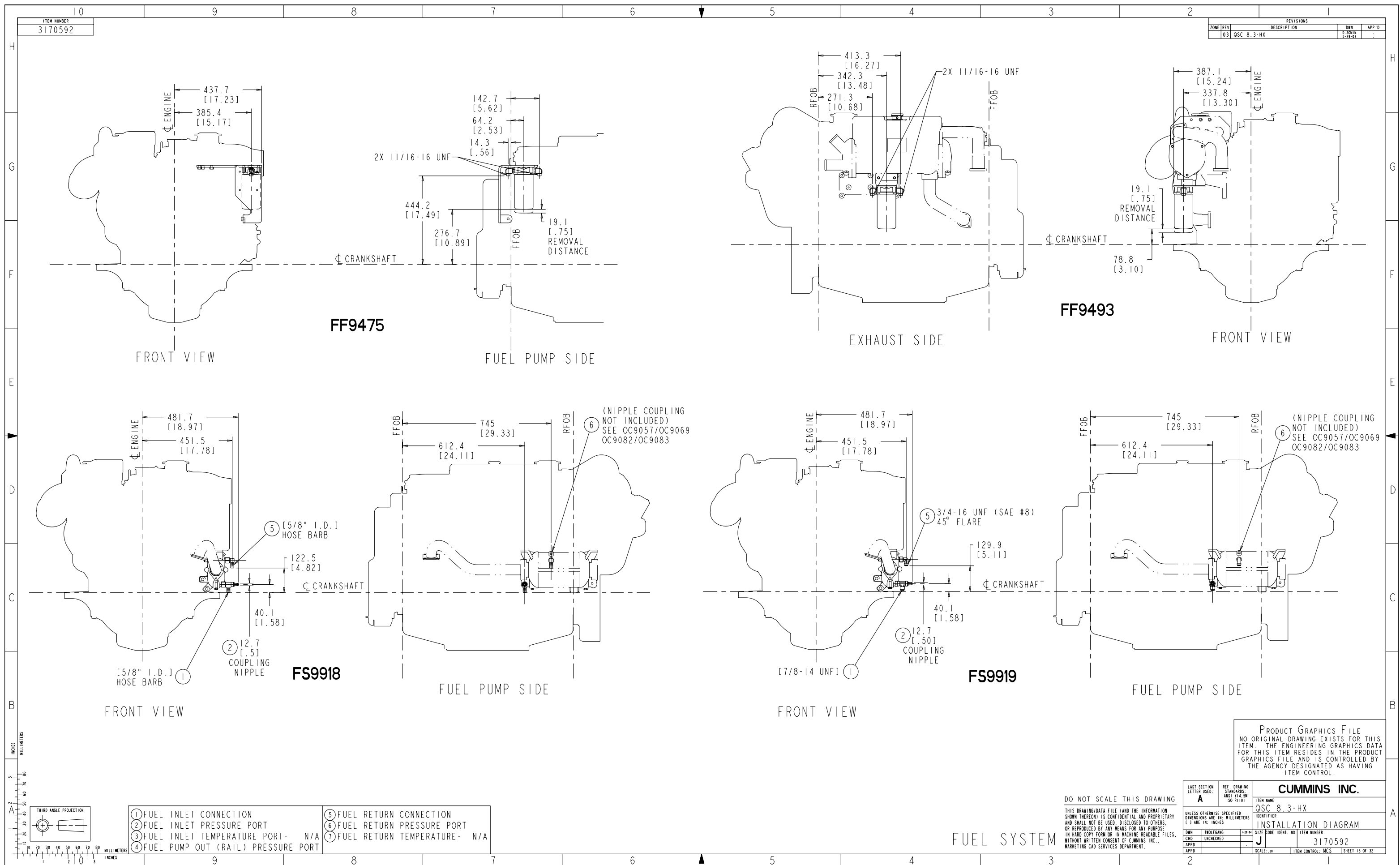


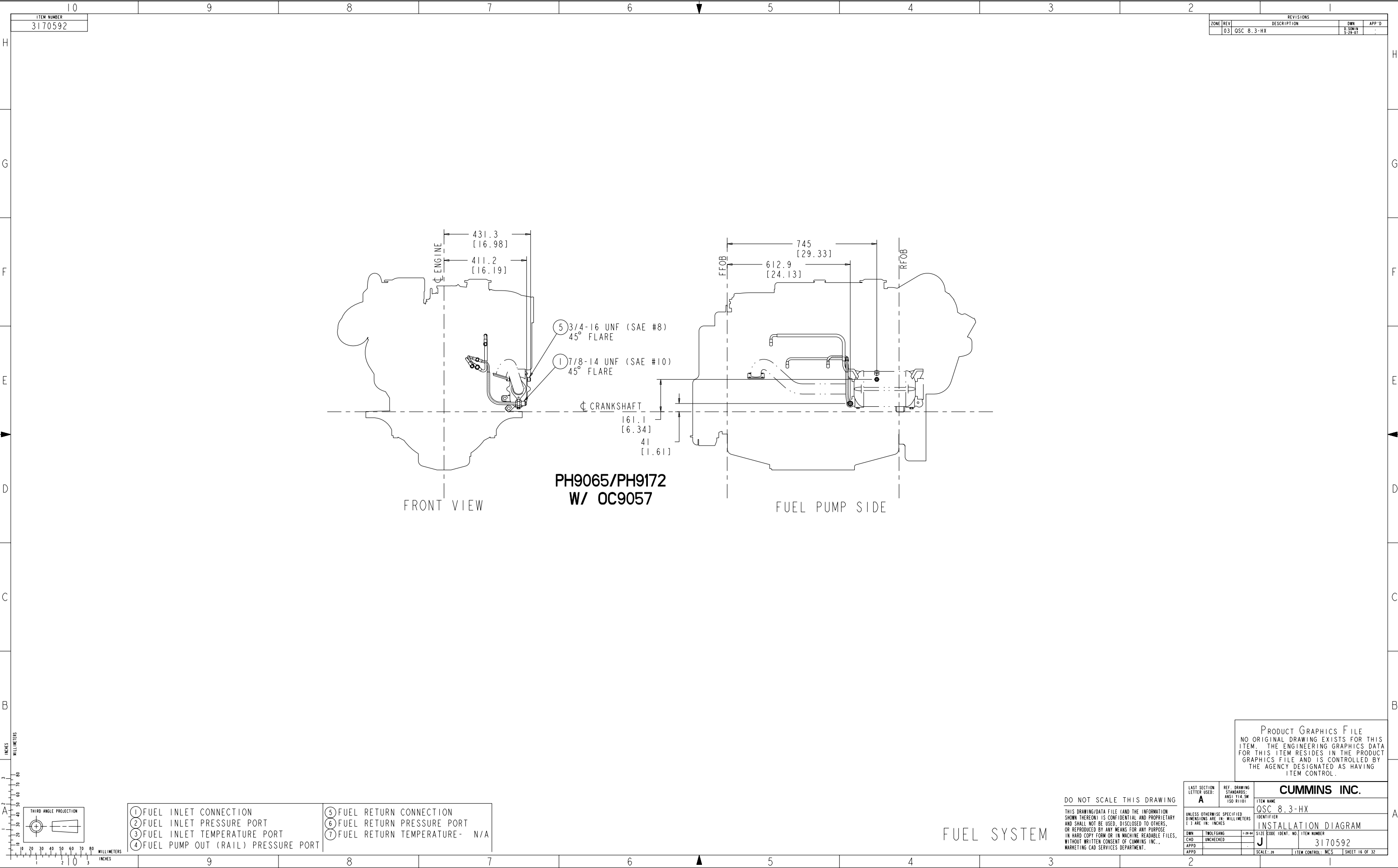
REVISIONS			
ZONE	REV	DESCRIPTION	APP'D
03	OSC	8.3-HX	

PRODUCT GRAPHICS FILE  
NO ORIGINAL DRAWING EXISTS FOR THIS ITEM. THE ENGINEERING GRAPHICS DATA FOR THIS ITEM RESIDES IN THE PRODUCT GRAPHICS FILE AND IS CONTROLLED BY THE AGENCY DESIGNATED AS HAVING ITEM CONTROL.

LAST SECTION LETTER USED: <b>A</b>		REF. DRAWING STANDARDS: ANSI Y14.5M ISO 81101		ITEM NAME <b>CUMMINS INC.</b>	
UNLESS OTHERWISE SPECIFIED DIMENSIONS ARE IN: MILLIMETERS ( ) ARE IN: INCHES		IDENTIFIER <b>QSC 8.3-HX</b>		ITEM NUMBER <b>3170592</b>	
DWN	TWOLFANG	1-20-04	SIZE CODE IDENT. NO.	ITEM CONTROL: MCS	
CHD	UNCHECKED			SHEET 14 OF 32	
APPD					

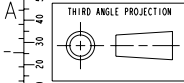
EXHAUST SYSTEM





ITEM NUMBER  
3170592

REVISIONS			
ZONE	REV	DESCRIPTION	APP'D
03	OSC	8.3-HX	



- |                                      |                                |
|--------------------------------------|--------------------------------|
| 1 FUEL INLET CONNECTION              | 5 FUEL RETURN CONNECTION       |
| 2 FUEL INLET PRESSURE PORT           | 6 FUEL RETURN PRESSURE PORT    |
| 3 FUEL INLET TEMPERATURE PORT        | 7 FUEL RETURN TEMPERATURE- N/A |
| 4 FUEL PUMP OUT (RAIL) PRESSURE PORT |                                |

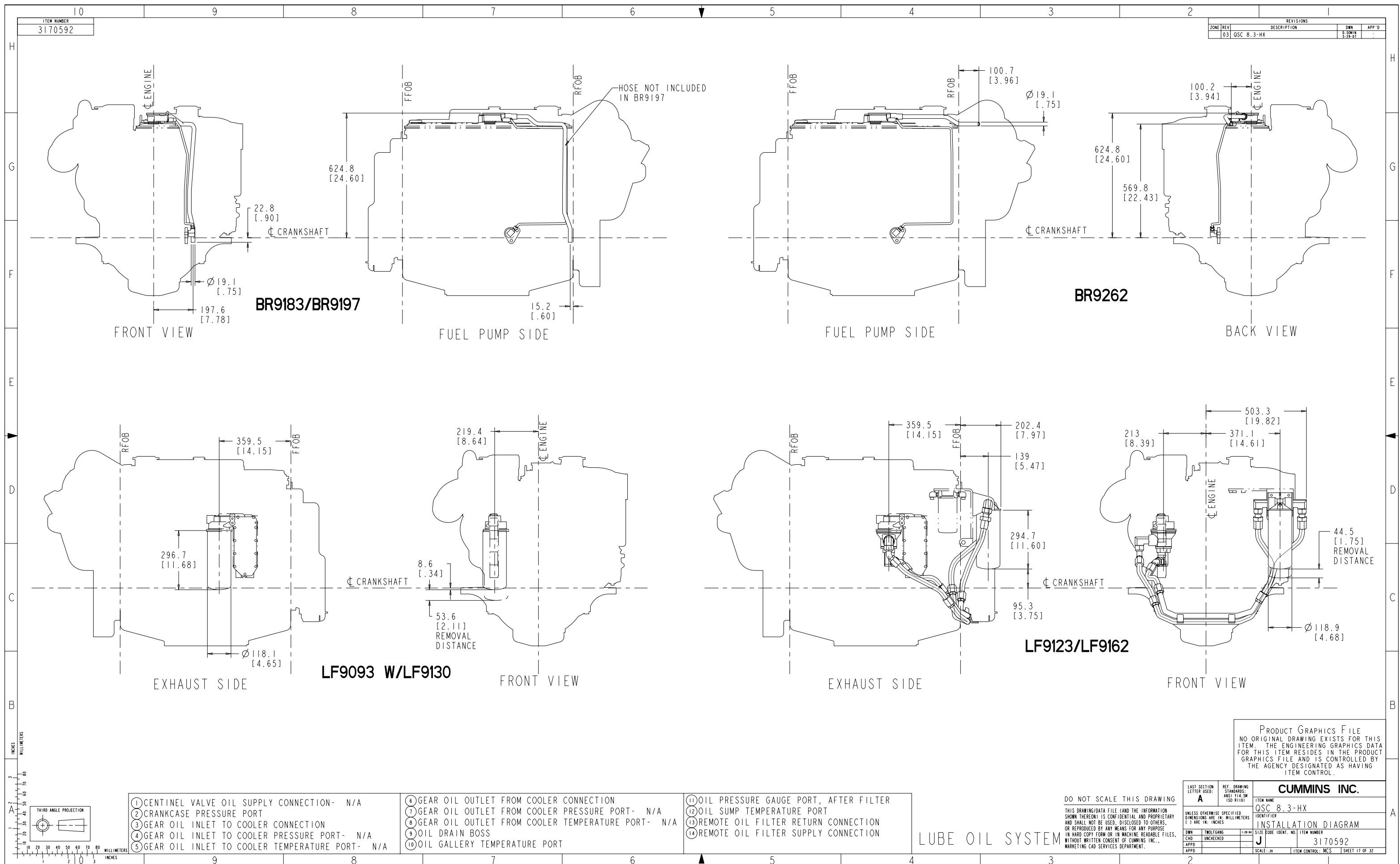
DO NOT SCALE THIS DRAWING

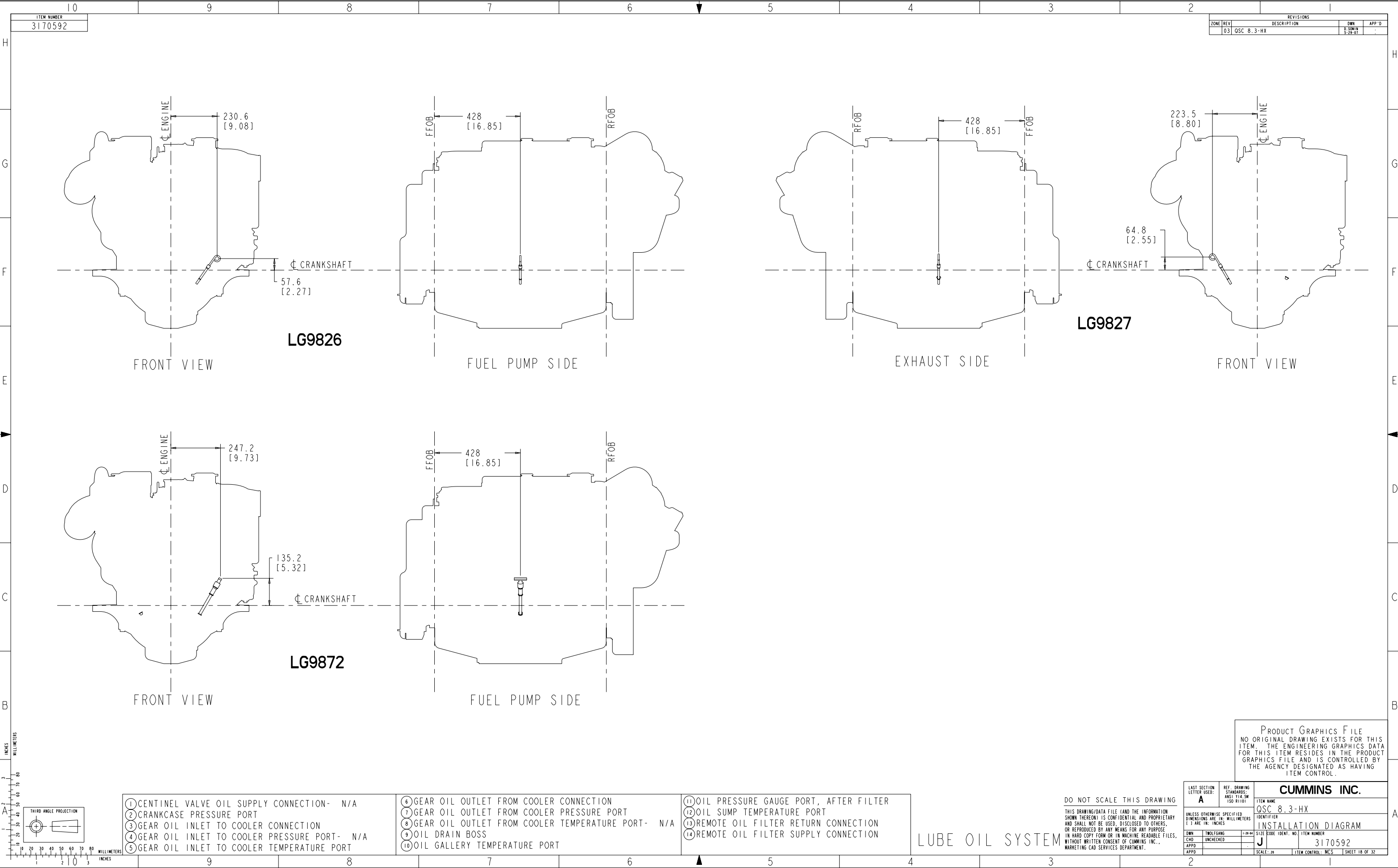
THIS DRAWING/DATA FILE (AND THE INFORMATION SHOWN THEREON) IS CONFIDENTIAL AND PROPRIETARY AND SHALL NOT BE USED, DISCLOSED TO OTHERS, OR REPRODUCED BY ANY MEANS FOR ANY PURPOSE IN HARD COPY FORM OR IN MACHINE READABLE FILES, WITHOUT WRITTEN CONSENT OF CUMMINS INC., MARKETING CAD SERVICES DEPARTMENT.

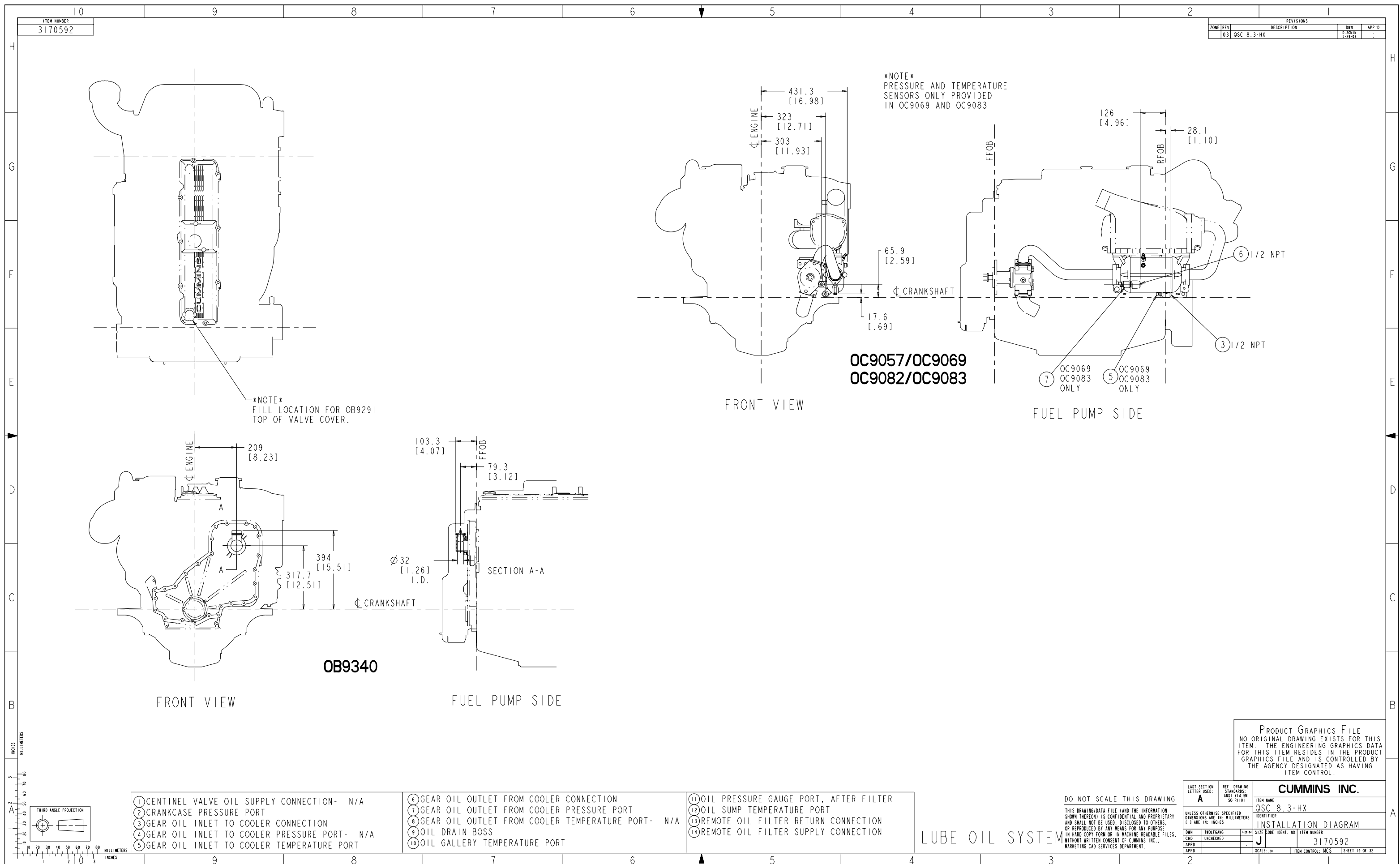
PRODUCT GRAPHICS FILE  
NO ORIGINAL DRAWING EXISTS FOR THIS ITEM. THE ENGINEERING GRAPHICS DATA FOR THIS ITEM RESIDES IN THE PRODUCT GRAPHICS FILE AND IS CONTROLLED BY THE AGENCY DESIGNATED AS HAVING ITEM CONTROL.

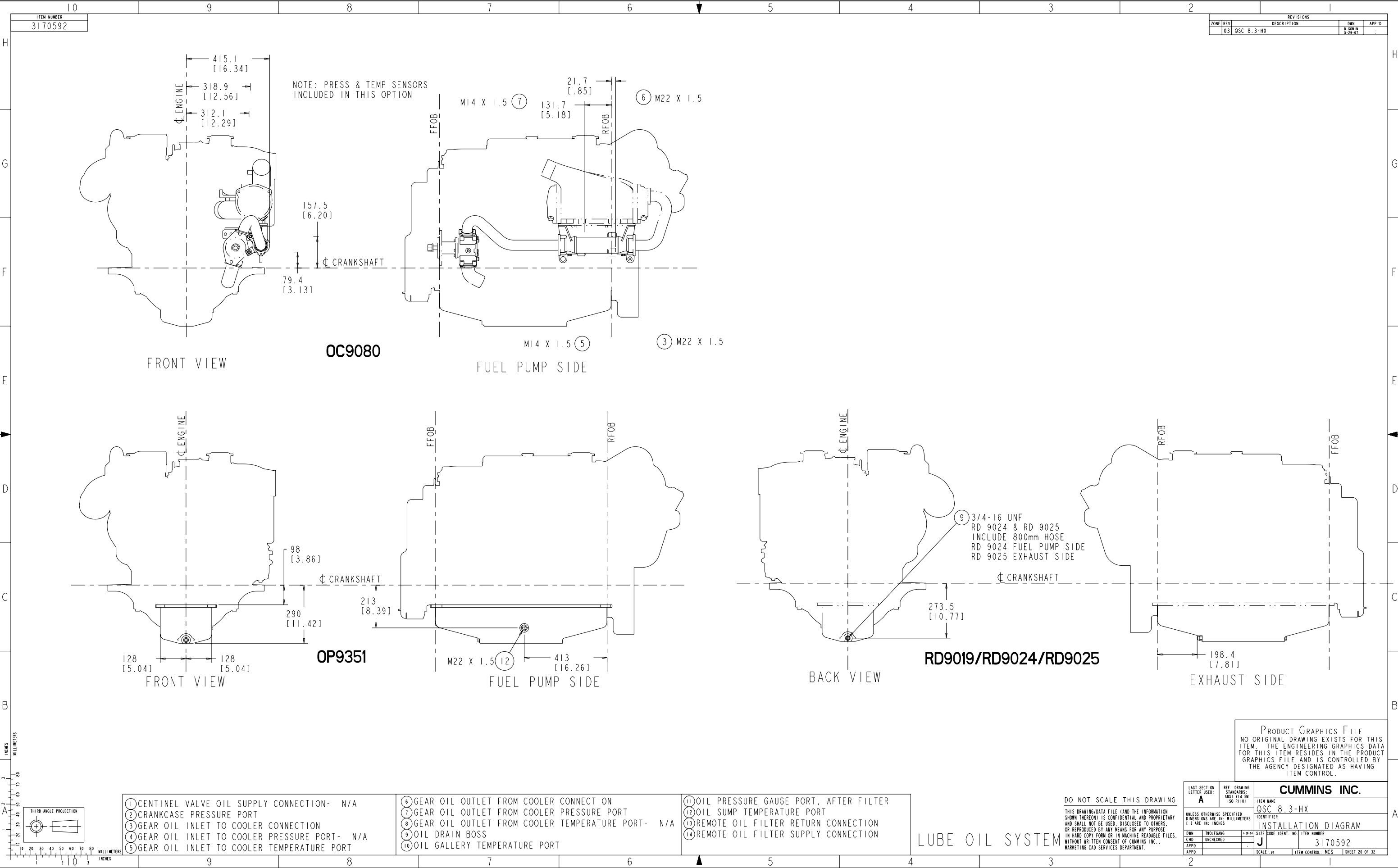
LAST SECTION LETTER USED:		REF. DRAWING STANDARDS:		ITEM NAME	
A		ANSI Y14.5M ISO 81101		QSC 8.3-HX	
UNLESS OTHERWISE SPECIFIED DIMENSIONS ARE IN: MILLIMETERS 1 3 ARE IN: INCHES		IDENTIFIER		INSTALLATION DIAGRAM	
DWN	TWO/FGANG	1-20-04	SIZE CODE IDENT. NO.	ITEM NUMBER	
CHD	UNCHECKED		J	3170592	
APPD			SCALE: 20	ITEM CONTROL: MCS	SHEET 16 OF 32











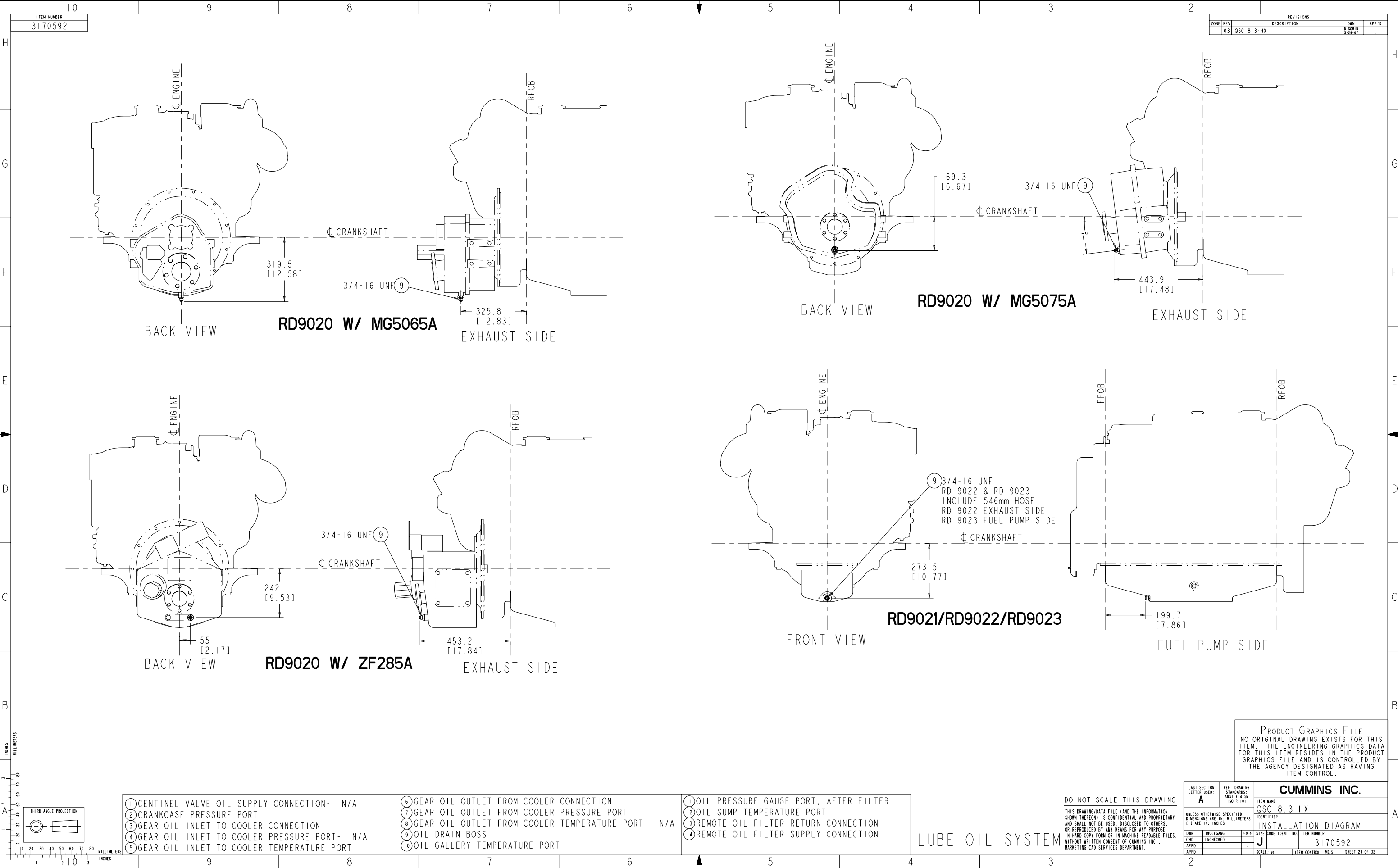
PRODUCT GRAPHICS FILE  
NO ORIGINAL DRAWING EXISTS FOR THIS ITEM. THE ENGINEERING GRAPHICS DATA FOR THIS ITEM RESIDES IN THE PRODUCT GRAPHICS FILE AND IS CONTROLLED BY THE AGENCY DESIGNATED AS HAVING ITEM CONTROL.

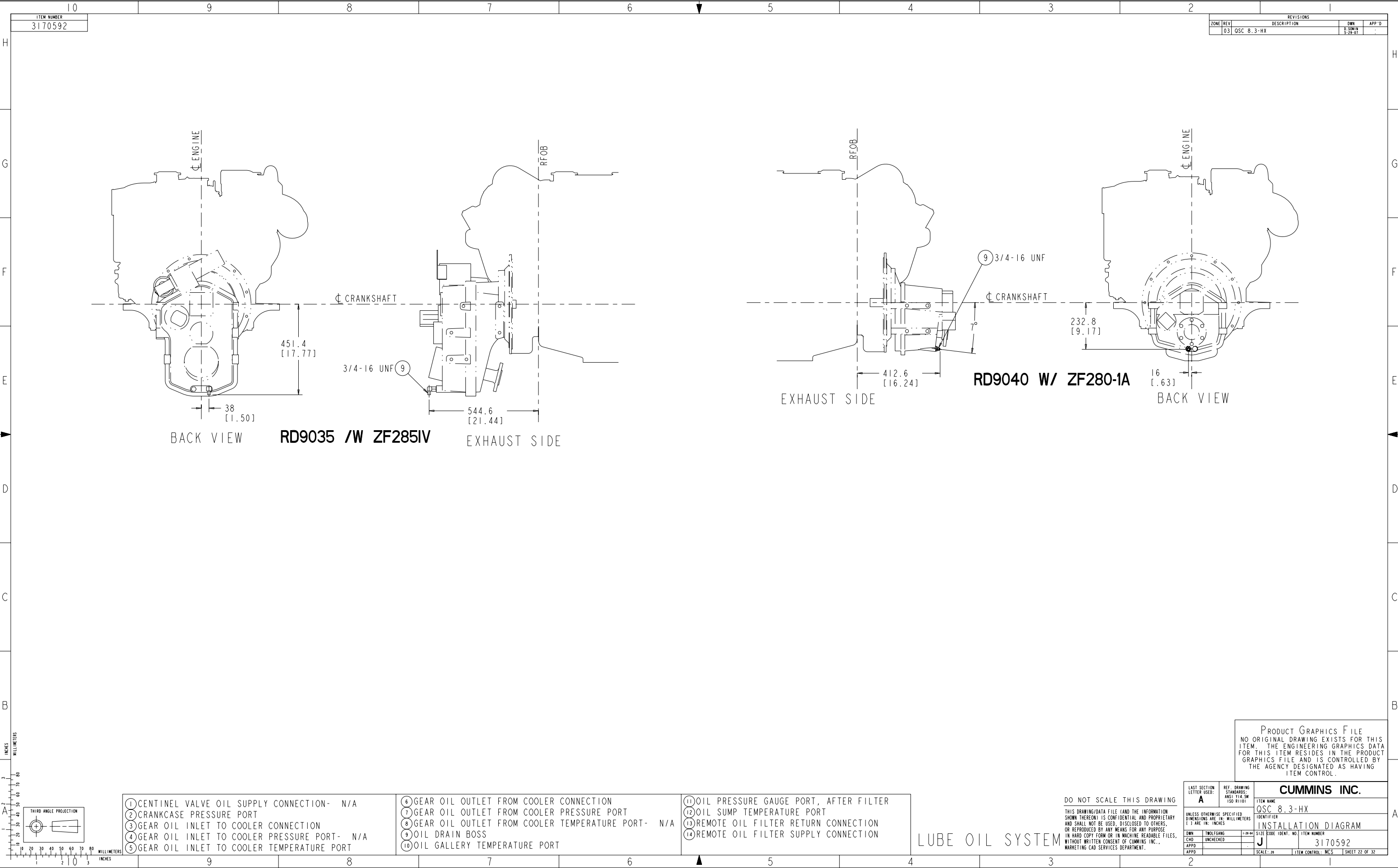
LAST SECTION LETTER USED: <b>A</b>	REF. DRAWING STANDARDS: ANSI Y14.5M ISO 81101	ITEM NAME <b>CUMMINS INC.</b>
UNLESS OTHERWISE SPECIFIED DIMENSIONS ARE IN: MILLIMETERS ( ) ARE IN: INCHES	IDENTIFIER <b>QSC 8.3-HX</b>	SIZE CODE IDENT. NO. <b>J</b>
DWN: UNCHECKED APPD: UNCHECKED APPD: UNCHECKED	ITEM NUMBER <b>3170592</b>	SCALE: 2X ITEM CONTROL: MCS SHEET 20 OF 32

DO NOT SCALE THIS DRAWING

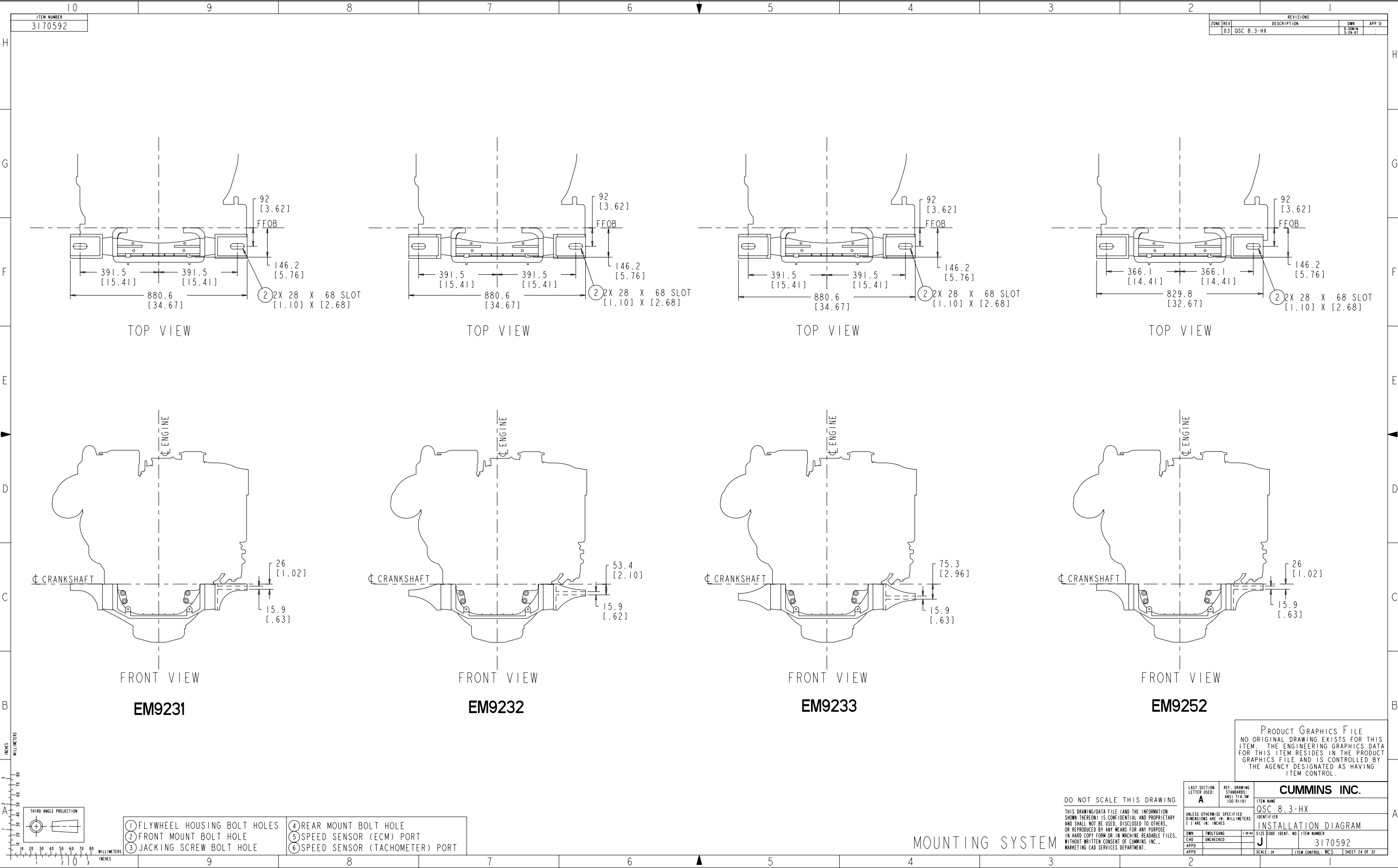
THIS DRAWING/DATA FILE (AND THE INFORMATION SHOWN THEREON) IS CONFIDENTIAL AND PROPRIETARY AND SHALL NOT BE USED, DISCLOSED TO OTHERS, OR REPRODUCED BY ANY MEANS FOR ANY PURPOSE IN HARD COPY FORM OR IN MACHINE READABLE FILES, WITHOUT WRITTEN CONSENT OF CUMMINS INC., MARKETING CAD SERVICES DEPARTMENT.

LUBE OIL SYSTEM

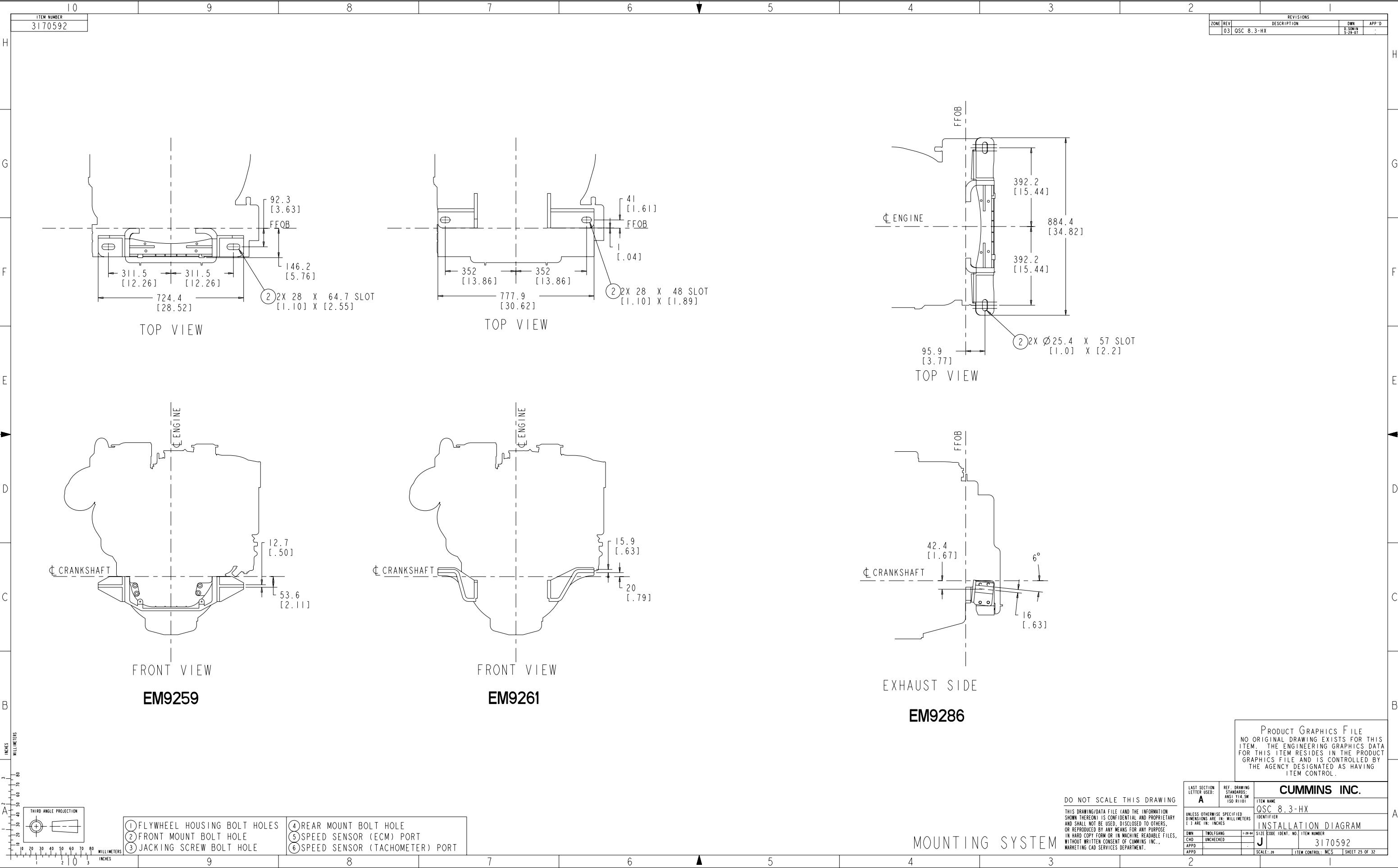


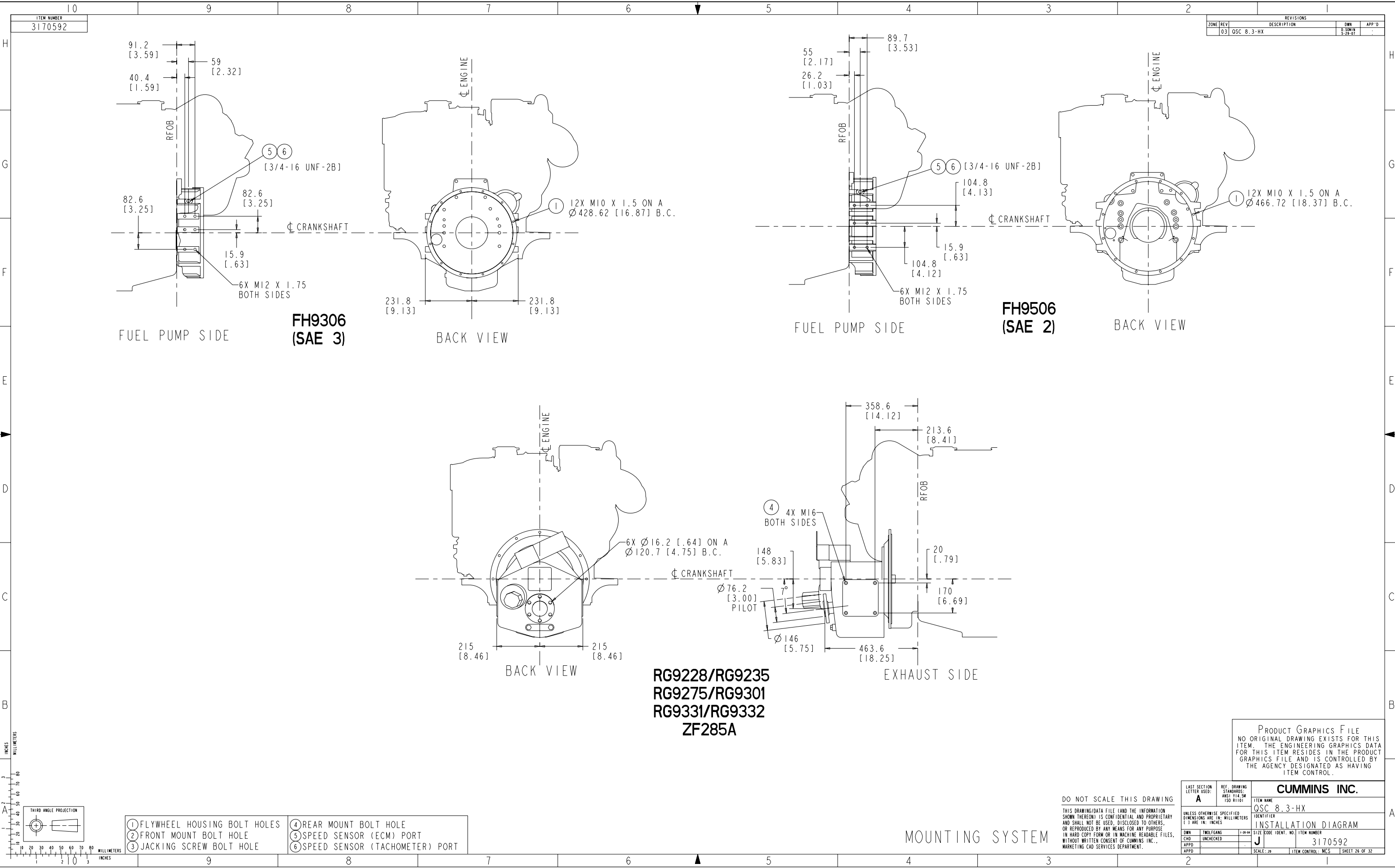


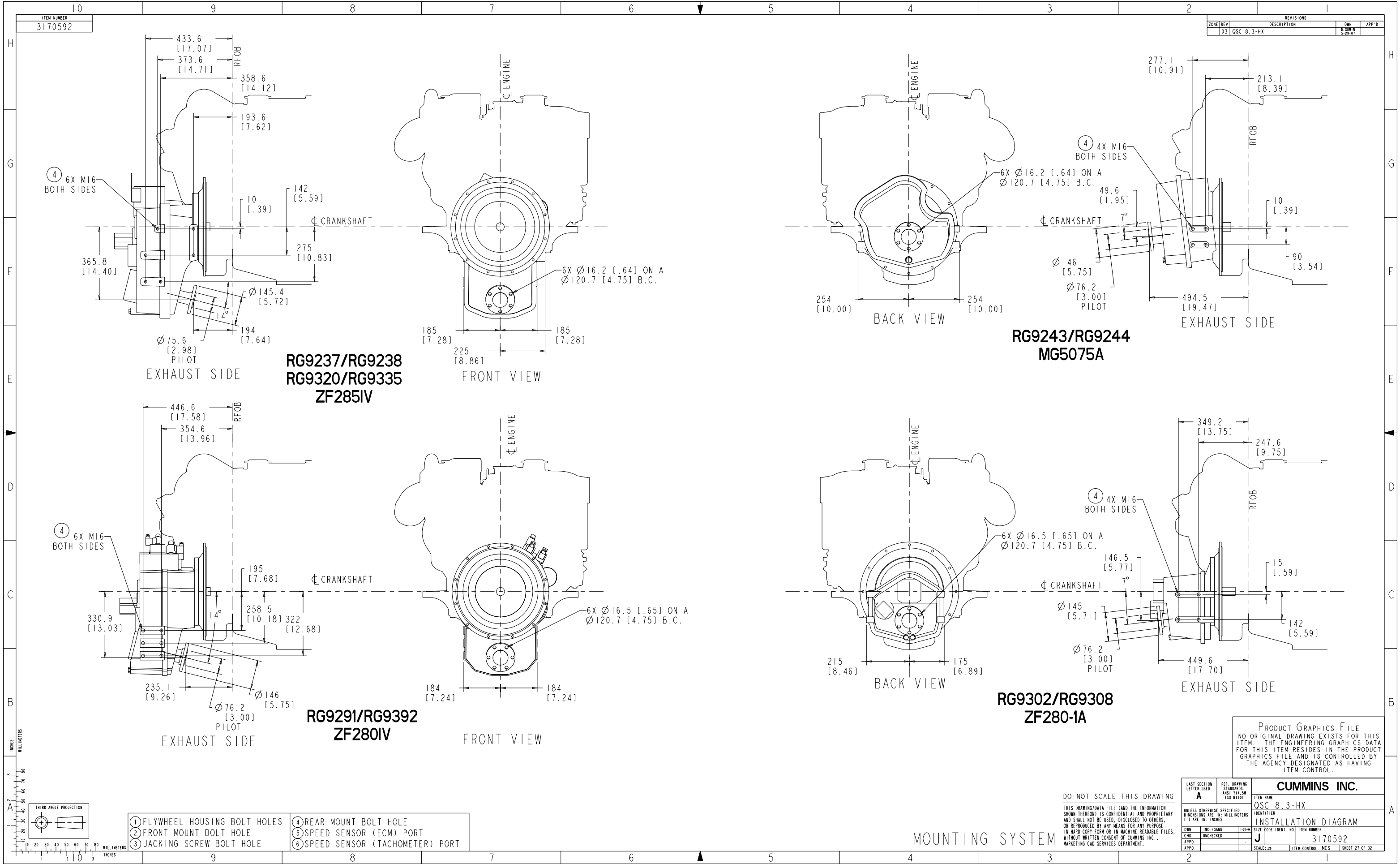


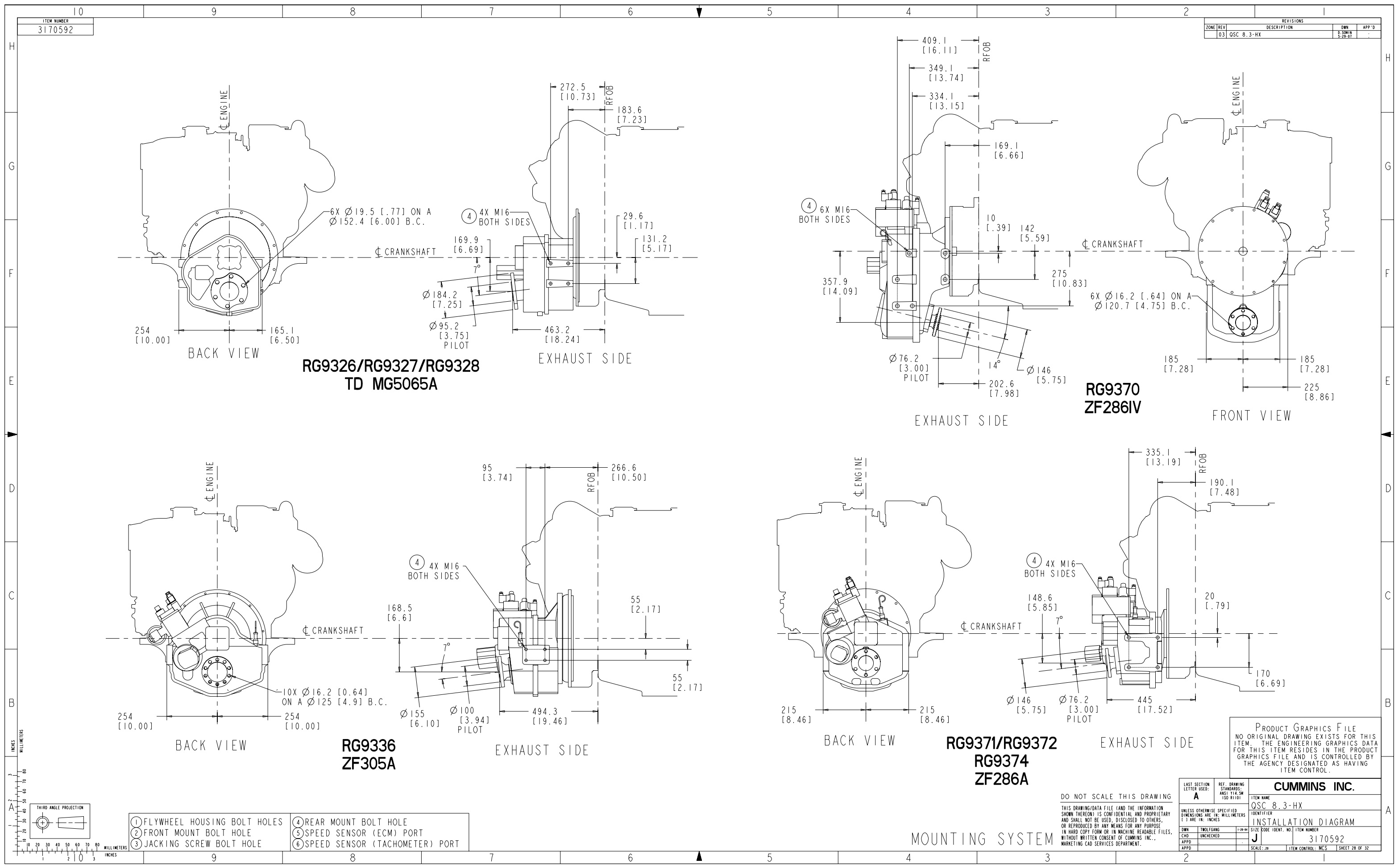












RG9326/RG9327/RG9328  
TD MG5065A

RG9370  
ZF286IV

RG9336  
ZF305A

RG9371/RG9372  
RG9374  
ZF286A

PRODUCT GRAPHICS FILE  
NO ORIGINAL DRAWING EXISTS FOR THIS  
ITEM. THE ENGINEERING GRAPHICS DATA  
FOR THIS ITEM RESIDES IN THE PRODUCT  
GRAPHICS FILE AND IS CONTROLLED BY  
THE AGENCY DESIGNATED AS HAVING  
ITEM CONTROL.

LAST SECTION LETTER USED:		REF. DRAWING STANDARDS:		ITEM NAME	
A		ANSI Y14.5M ISO 81101		CUMMINS INC.	
UNLESS OTHERWISE SPECIFIED DIMENSIONS ARE IN: MILLIMETERS ( ) ARE IN: INCHES		IDENTIFIER		QSC 8.3-HX	
DWN: TMO/FGM		SIZE CODE IDENT. NO.		ITEM NUMBER	
CHD: UNCHECKED		J		3170592	
APPD:		SCALE: 2X		ITEM CONTROL: MCS	
				SHEET 28 OF 32	

DO NOT SCALE THIS DRAWING  
THIS DRAWING/DATA FILE (AND THE INFORMATION  
SHOWN THEREON) IS CONFIDENTIAL AND PROPRIETARY  
AND SHALL NOT BE USED, DISCLOSED TO OTHERS,  
OR REPRODUCED BY ANY MEANS FOR ANY PURPOSE  
IN HARD COPY FORM OR IN MACHINE READABLE FILES,  
WITHOUT WRITTEN CONSENT OF CUMMINS INC.,  
MARKETING CAD SERVICES DEPARTMENT.

MOUNTING SYSTEM

