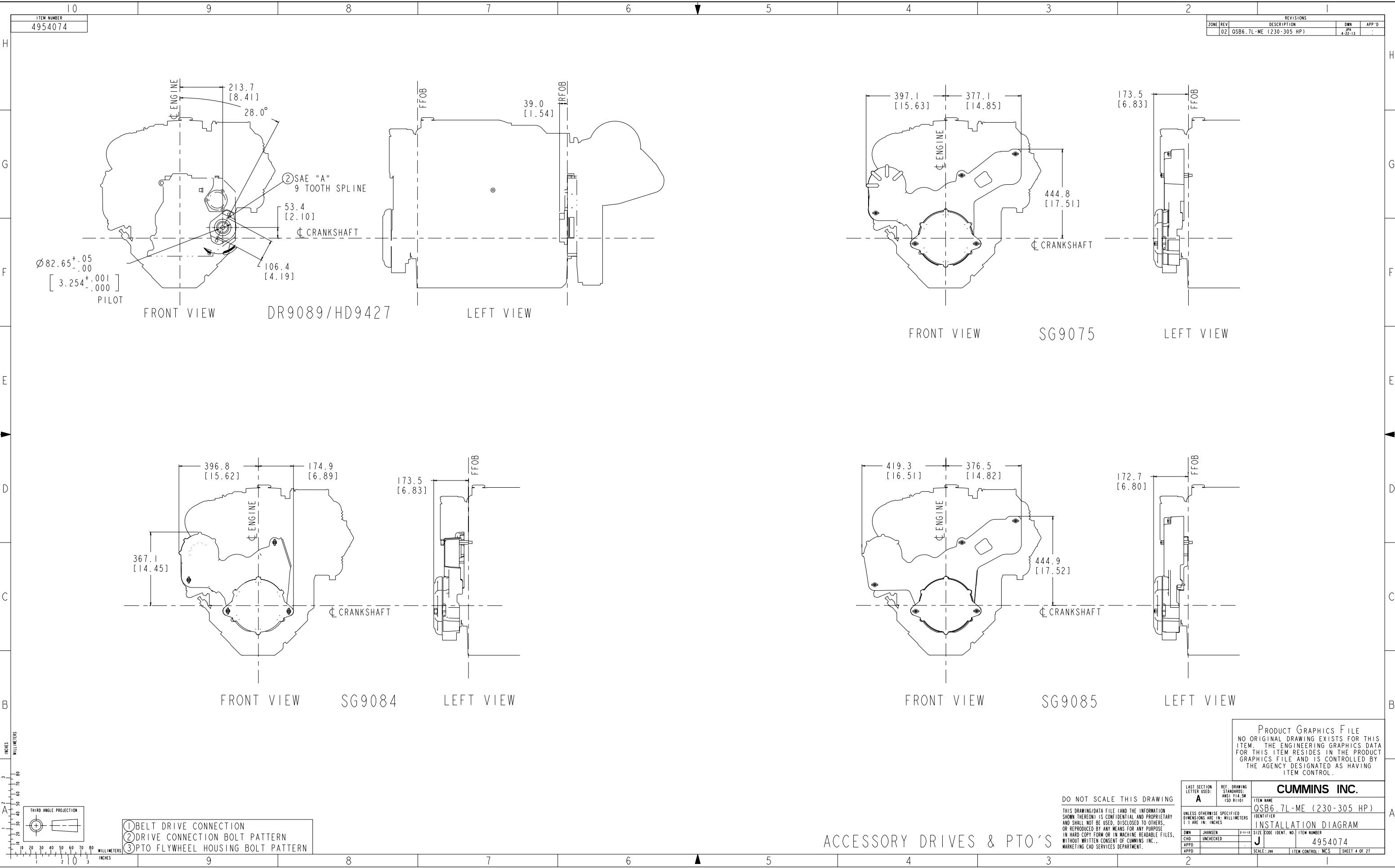
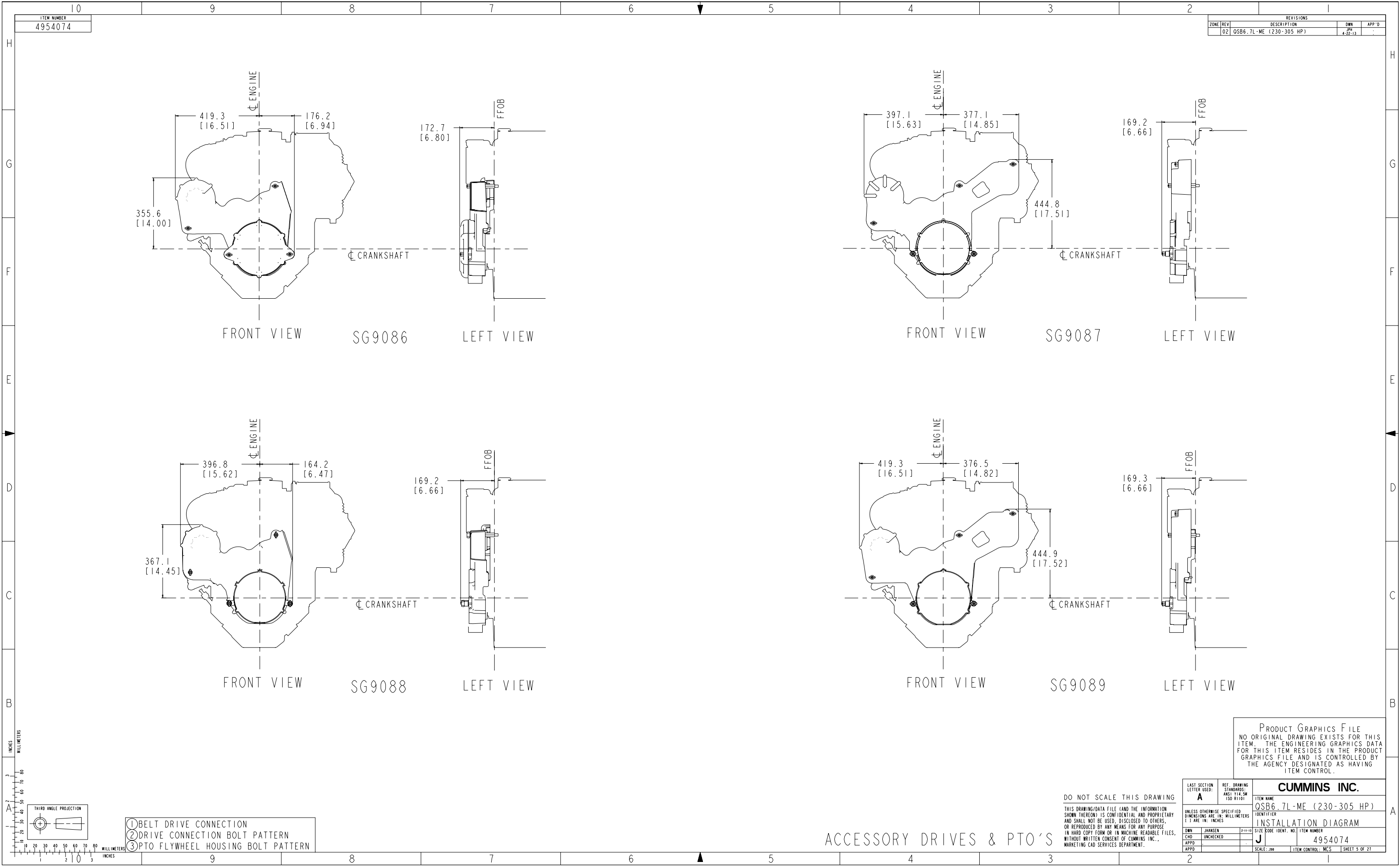
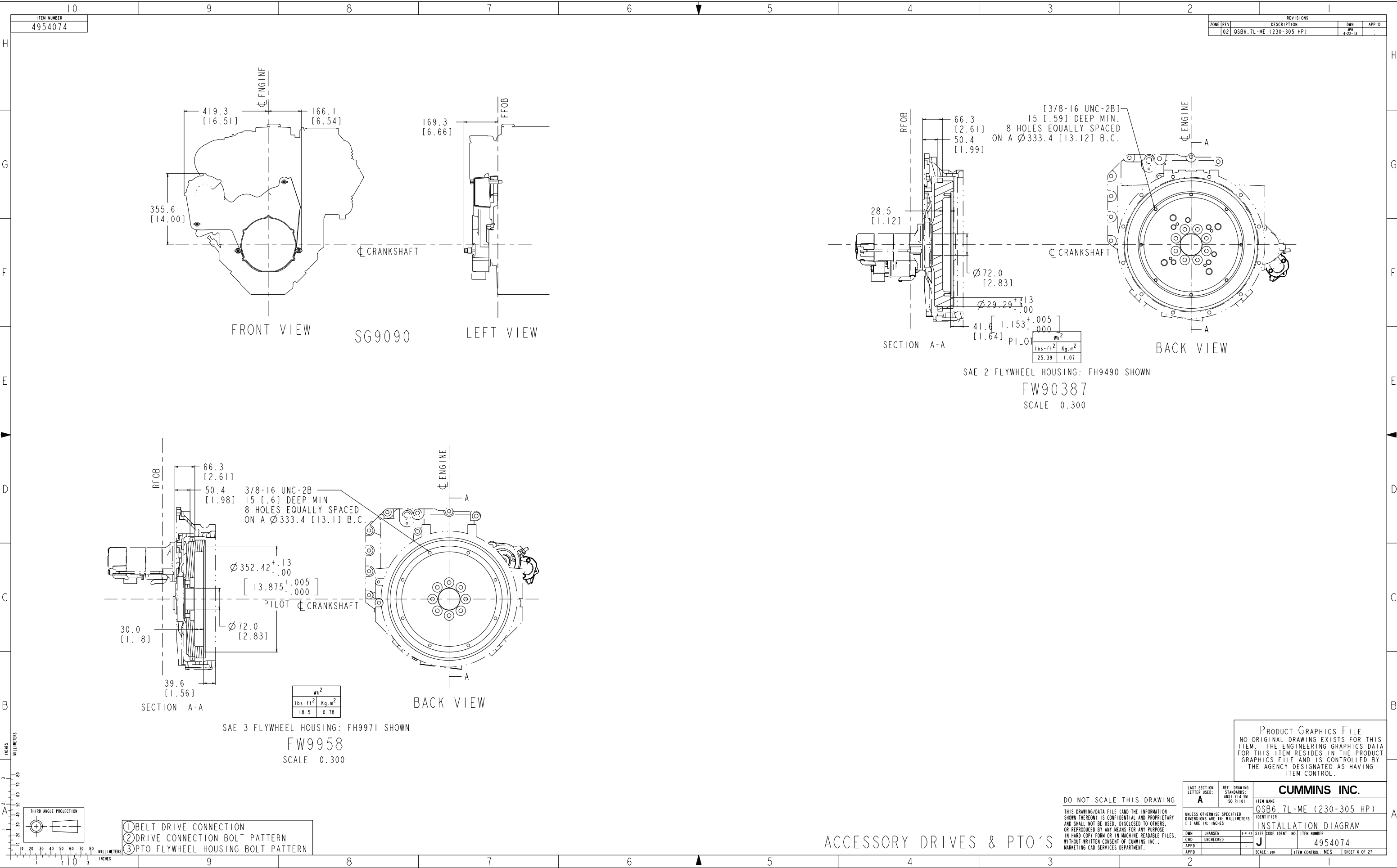
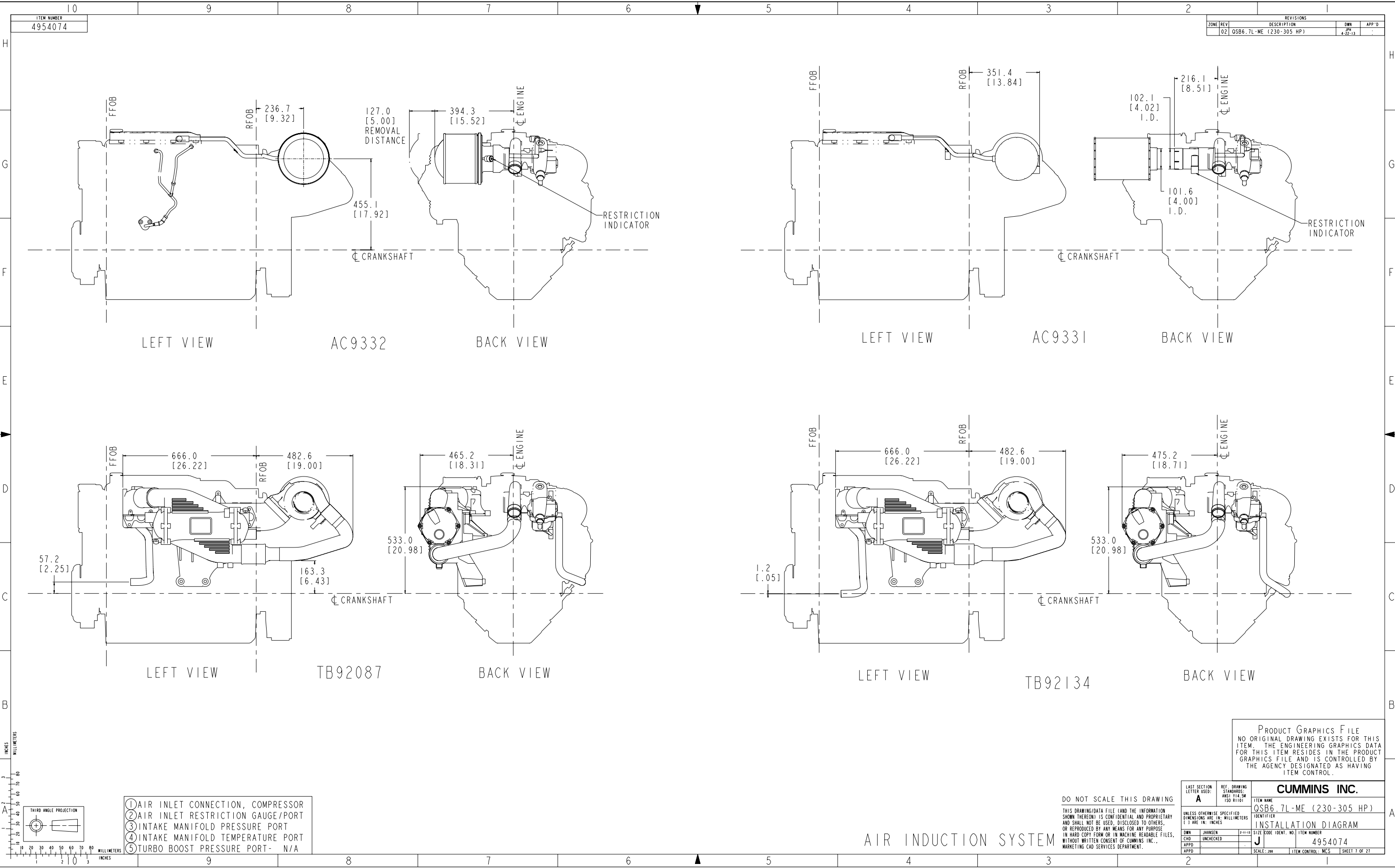


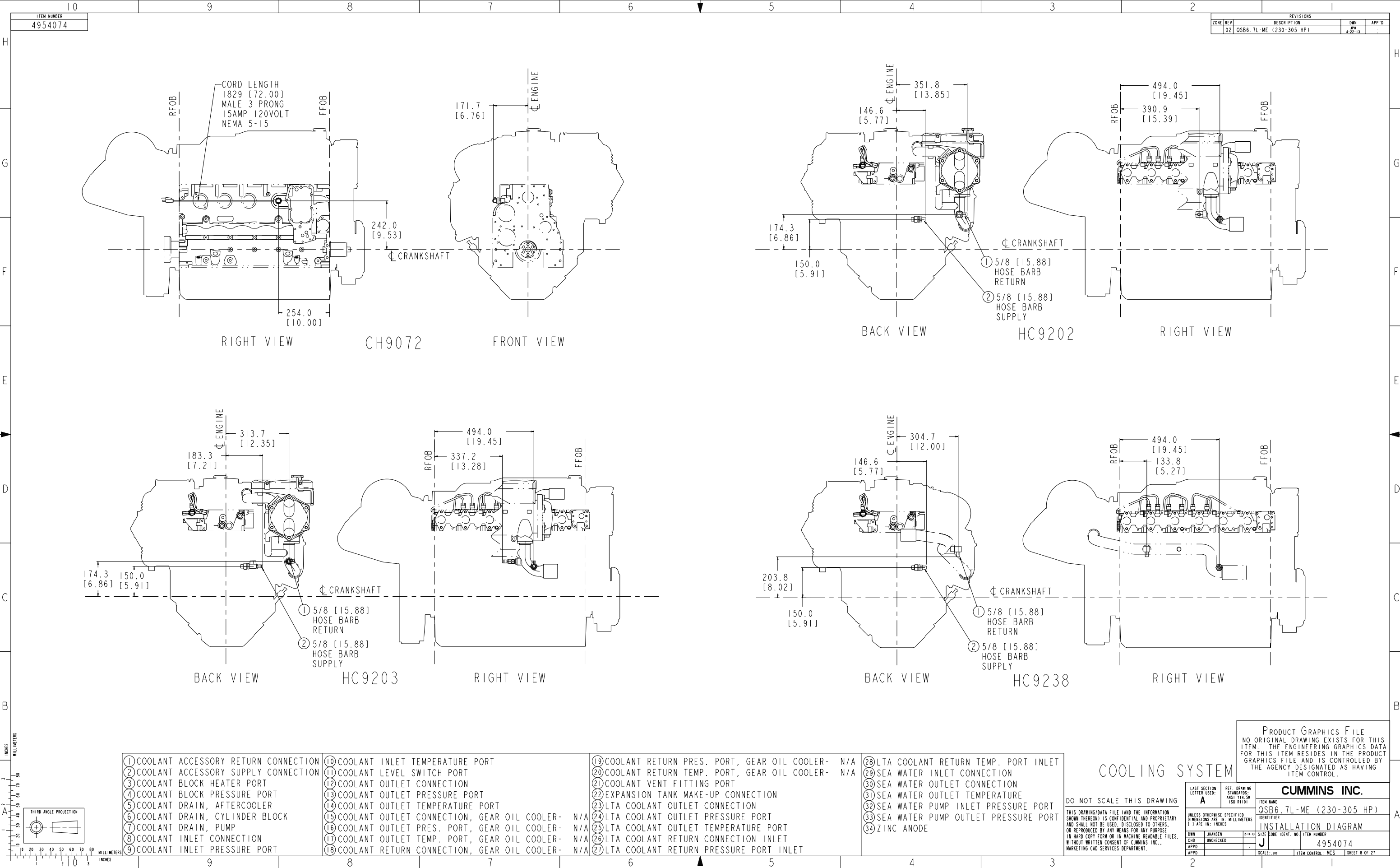
ACCESSORY DRIVES & PTO'S











ITEM NUMBER
4954074

REVISIONS			
ZONE	REV	DESCRIPTION	APP'D
02	OSB6.7L-ME (230-305 HP)		

CORD LENGTH
1829 [72.00]
MALE 3 PRONG
15AMP 120VOLT
NEMA 5-15

RIGHT VIEW

CH9072

FRONT VIEW

BACK VIEW

HC9202

RIGHT VIEW

BACK VIEW

HC9203

RIGHT VIEW

BACK VIEW

HC9238

RIGHT VIEW

① COOLANT ACCESSORY RETURN CONNECTION	⑩ COOLANT INLET TEMPERATURE PORT	⑲ COOLANT RETURN PRES. PORT, GEAR OIL COOLER-	N/A	⑳ LTA COOLANT RETURN TEMP. PORT INLET
② COOLANT ACCESSORY SUPPLY CONNECTION	⑪ COOLANT LEVEL SWITCH PORT	⑳ COOLANT RETURN TEMP. PORT, GEAR OIL COOLER-	N/A	㉑ SEA WATER INLET CONNECTION
③ COOLANT BLOCK HEATER PORT	⑫ COOLANT OUTLET CONNECTION	㉑ COOLANT VENT FITTING PORT		㉒ SEA WATER OUTLET CONNECTION
④ COOLANT BLOCK PRESSURE PORT	⑬ COOLANT OUTLET PRESSURE PORT	㉒ EXPANSION TANK MAKE-UP CONNECTION		㉓ SEA WATER OUTLET TEMPERATURE
⑤ COOLANT DRAIN, AFTERCOOLER	⑭ COOLANT OUTLET TEMPERATURE PORT	㉓ LTA COOLANT OUTLET CONNECTION		㉔ SEA WATER PUMP INLET PRESSURE PORT
⑥ COOLANT DRAIN, CYLINDER BLOCK	⑮ COOLANT OUTLET CONNECTION, GEAR OIL COOLER-	㉔ LTA COOLANT OUTLET PRESSURE PORT	N/A	㉕ SEA WATER PUMP OUTLET PRESSURE PORT
⑦ COOLANT DRAIN, PUMP	⑯ COOLANT OUTLET PRES. PORT, GEAR OIL COOLER-	㉕ LTA COOLANT OUTLET TEMPERATURE PORT	N/A	㉖ ZINC ANODE
⑧ COOLANT INLET CONNECTION	⑰ COOLANT OUTLET TEMP. PORT, GEAR OIL COOLER-	㉖ LTA COOLANT RETURN CONNECTION INLET	N/A	
⑨ COOLANT INLET PRESSURE PORT	⑱ COOLANT RETURN CONNECTION, GEAR OIL COOLER-	㉗ LTA COOLANT RETURN PRESSURE PORT INLET	N/A	

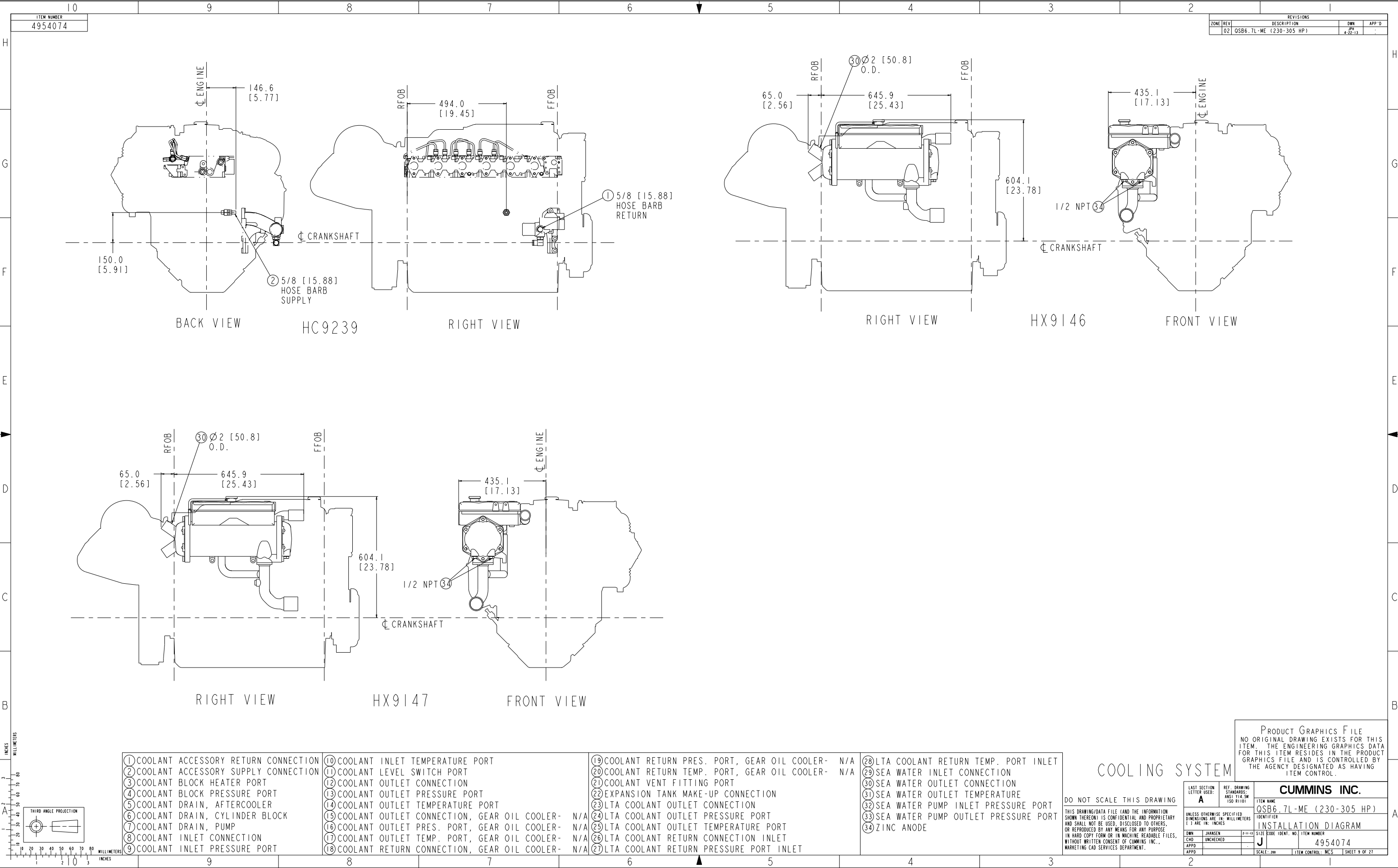
DO NOT SCALE THIS DRAWING

THIS DRAWING/DATA FILE (AND THE INFORMATION SHOWN THEREON) IS CONFIDENTIAL AND PROPRIETARY AND SHALL NOT BE USED, DISCLOSED TO OTHERS, OR REPRODUCED BY ANY MEANS FOR ANY PURPOSE IN HARD COPY FORM OR IN MACHINE READABLE FILES, WITHOUT WRITTEN CONSENT OF CUMMINS, INC., MARKETING CAD SERVICES DEPARTMENT.

COOLING SYSTEM

PRODUCT GRAPHICS FILE
NO ORIGINAL DRAWING EXISTS FOR THIS ITEM. THE ENGINEERING GRAPHICS DATA FOR THIS ITEM RESIDES IN THE PRODUCT GRAPHICS FILE AND IS CONTROLLED BY THE AGENCY DESIGNATED AS HAVING ITEM CONTROL.

LAST SECTION LETTER USED: A	REF. DRAWING STANDARDS: ANSI Y14.5M ISO 81101	ITEM NAME OSB6.7L-ME (230-305 HP)
UNLESS OTHERWISE SPECIFIED DIMENSIONS ARE IN: MILLIMETERS 1 3 ARE IN: INCHES	IDENTIFIER J	SIZE CODE IDENT. NO. ITEM NUMBER 4954074
DWN: JHANSEN CHD: UNCHECKED APPD: [blank]	SCALE: 200	ITEM CONTROL: MCS SHEET 8 OF 27

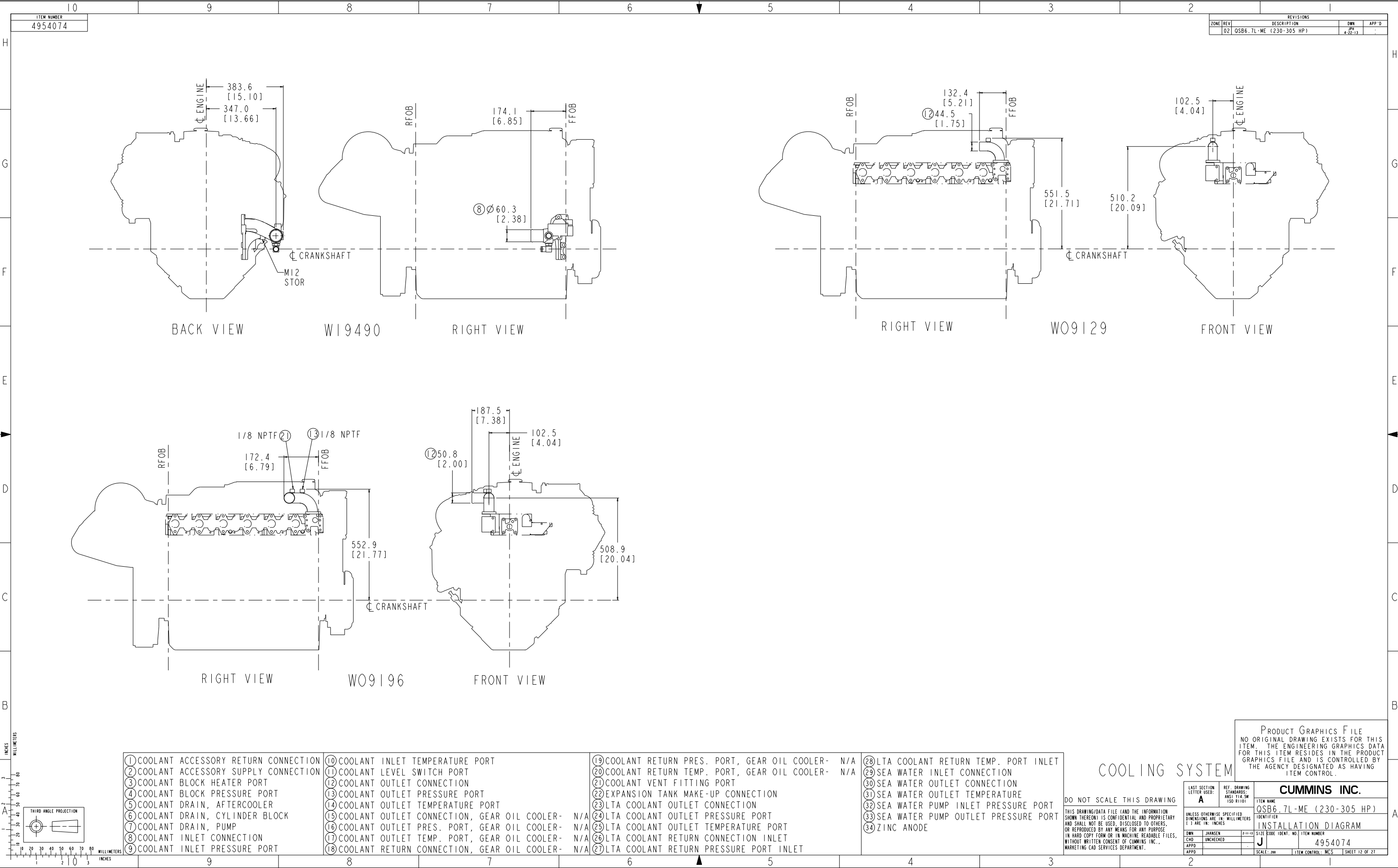


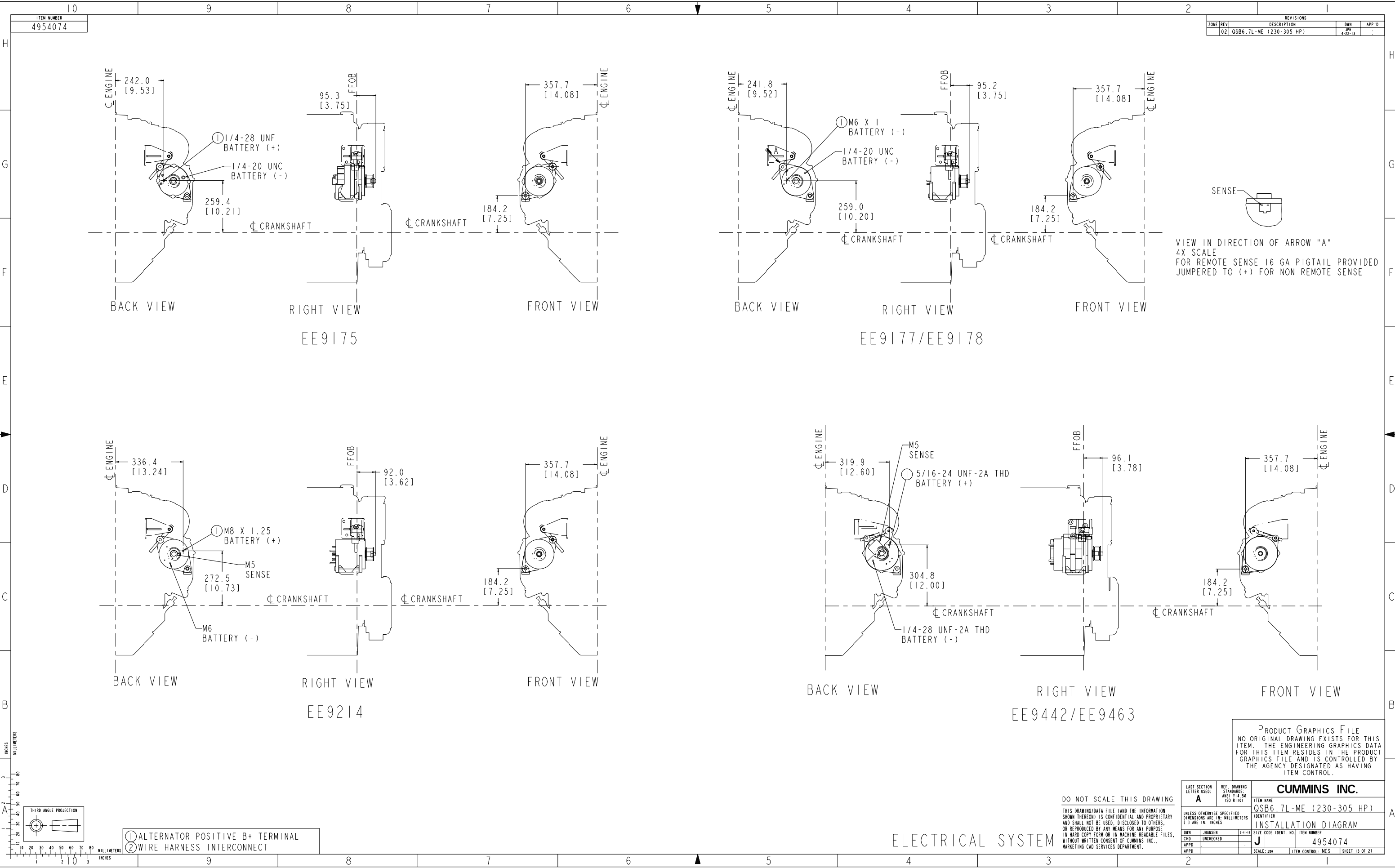
COOLING SYSTEM

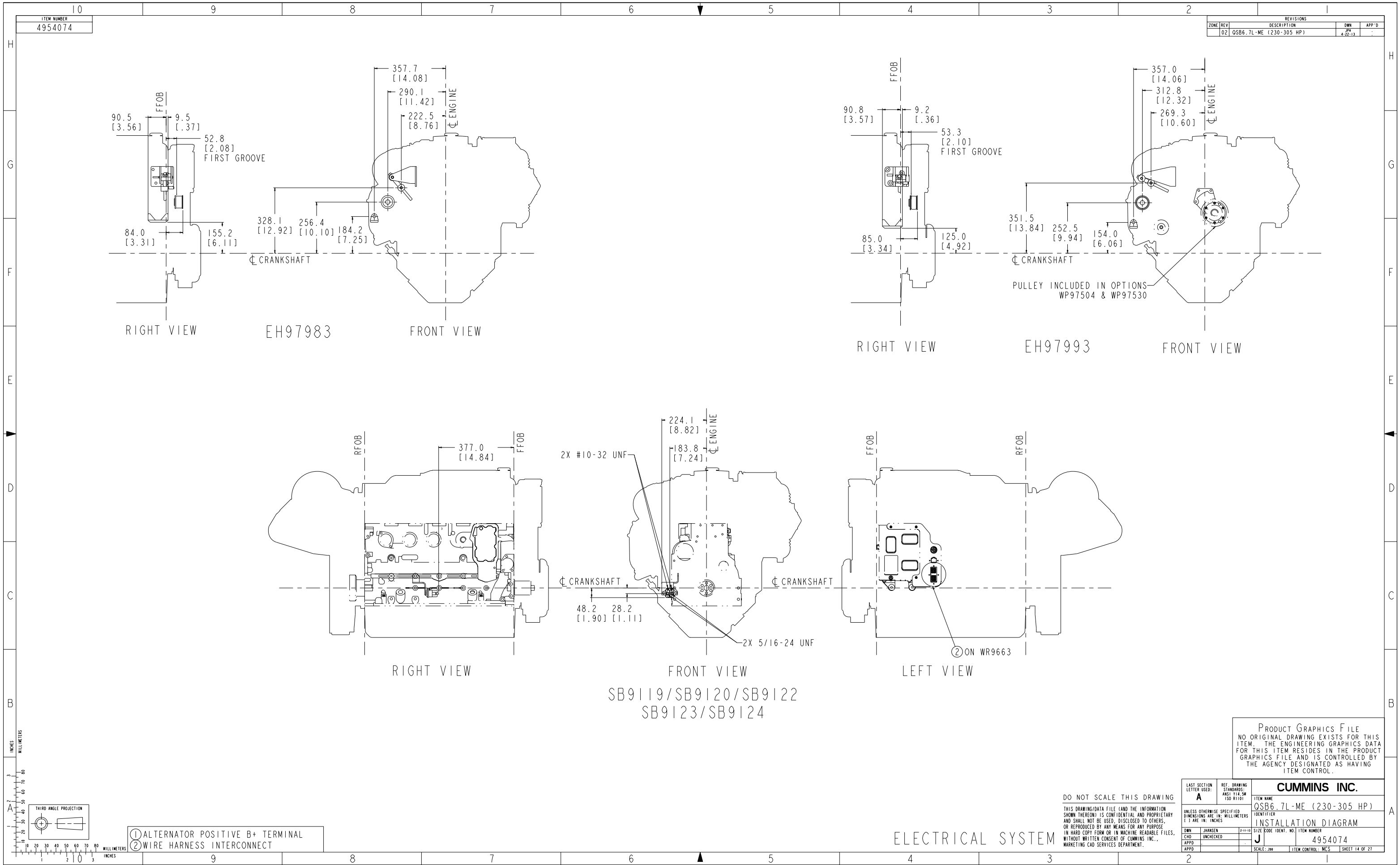
DO NOT SCALE THIS DRAWING

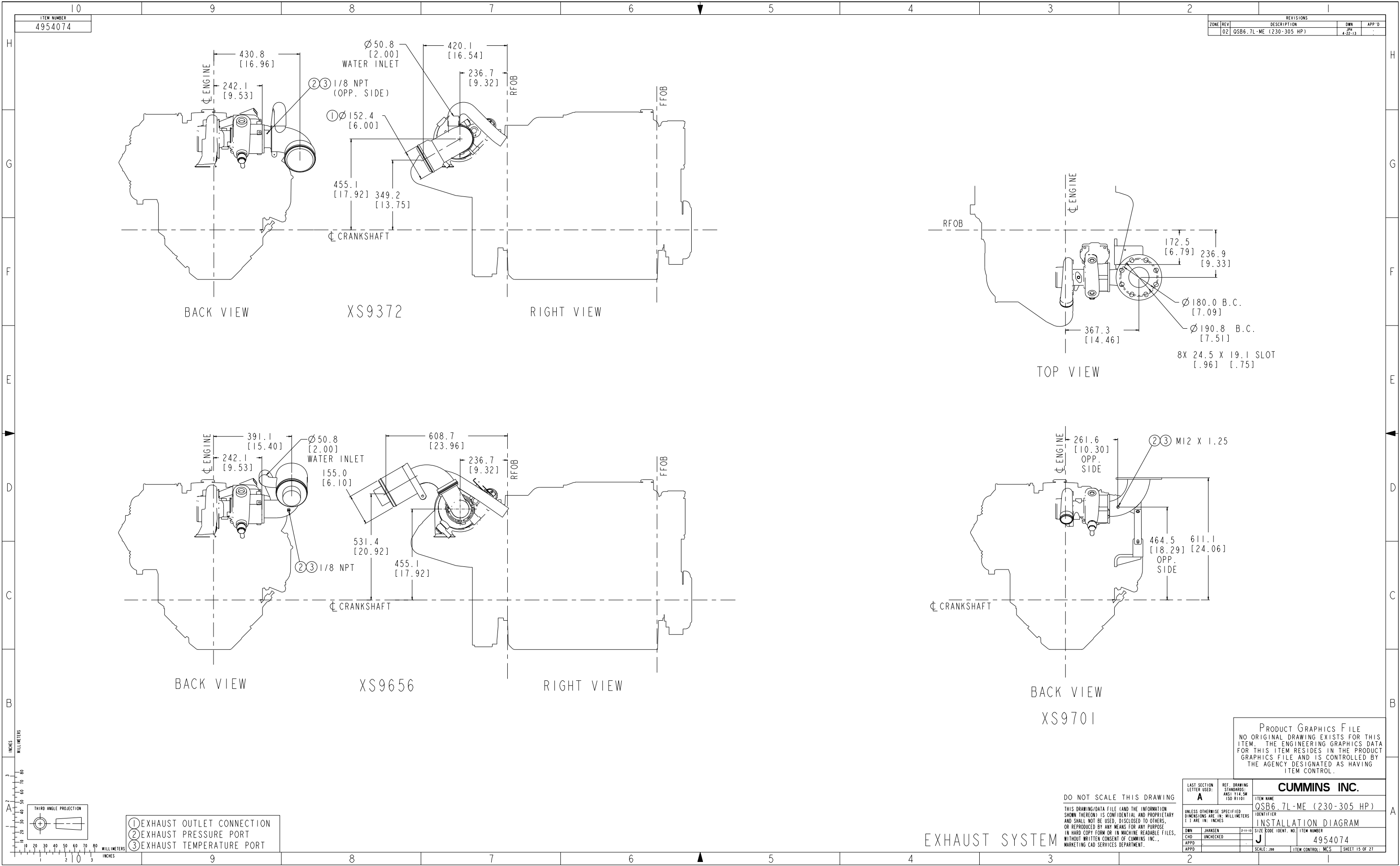
THIS DRAWING/DATA FILE (AND THE INFORMATION SHOWN THEREON) IS CONFIDENTIAL AND PROPRIETARY AND SHALL NOT BE USED, DISCLOSED TO OTHERS, OR REPRODUCED BY ANY MEANS FOR ANY PURPOSE IN HARD COPY FORM OR IN MACHINE READABLE FILES, WITHOUT WRITTEN CONSENT OF CUMMINS INC., MARKETING CAD SERVICES DEPARTMENT.

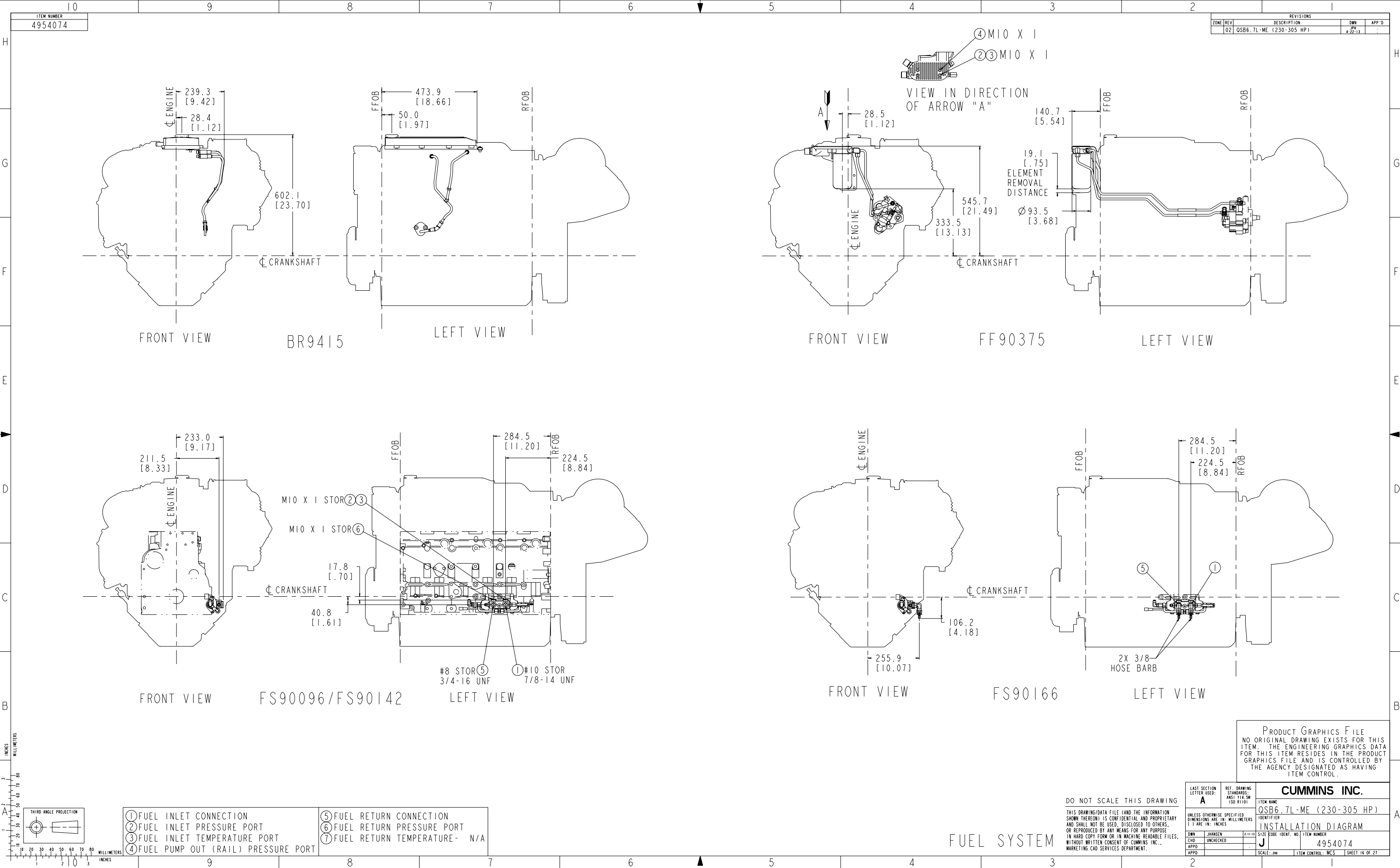
LAST SECTION LETTER USED: A	REF. DRAWING STANDARDS: ANSI Y14.5M ISO 81101	ITEM NAME QSB6.7L-ME (230-305 HP)
UNLESS OTHERWISE SPECIFIED DIMENSIONS ARE IN: MILLIMETERS 1 3 ARE IN: INCHES	IDENTIFIER J	SIZE CODE IDENT. NO. ITEM NUMBER 4954074
DWN: JHANSEN CHD: UNCHECKED APPD:	SCALE: 200	ITEM CONTROL: MCS SHEET 9 OF 27

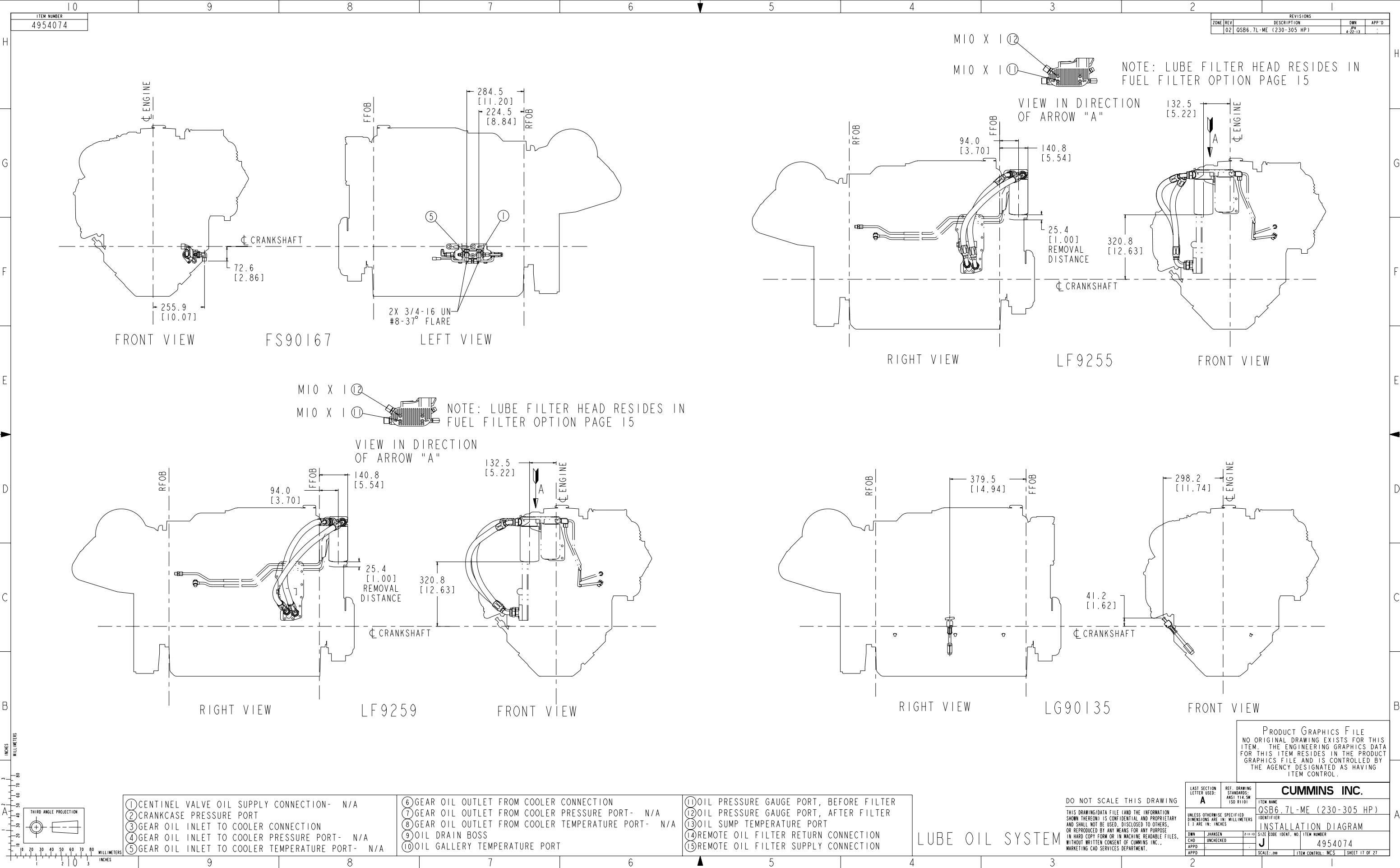


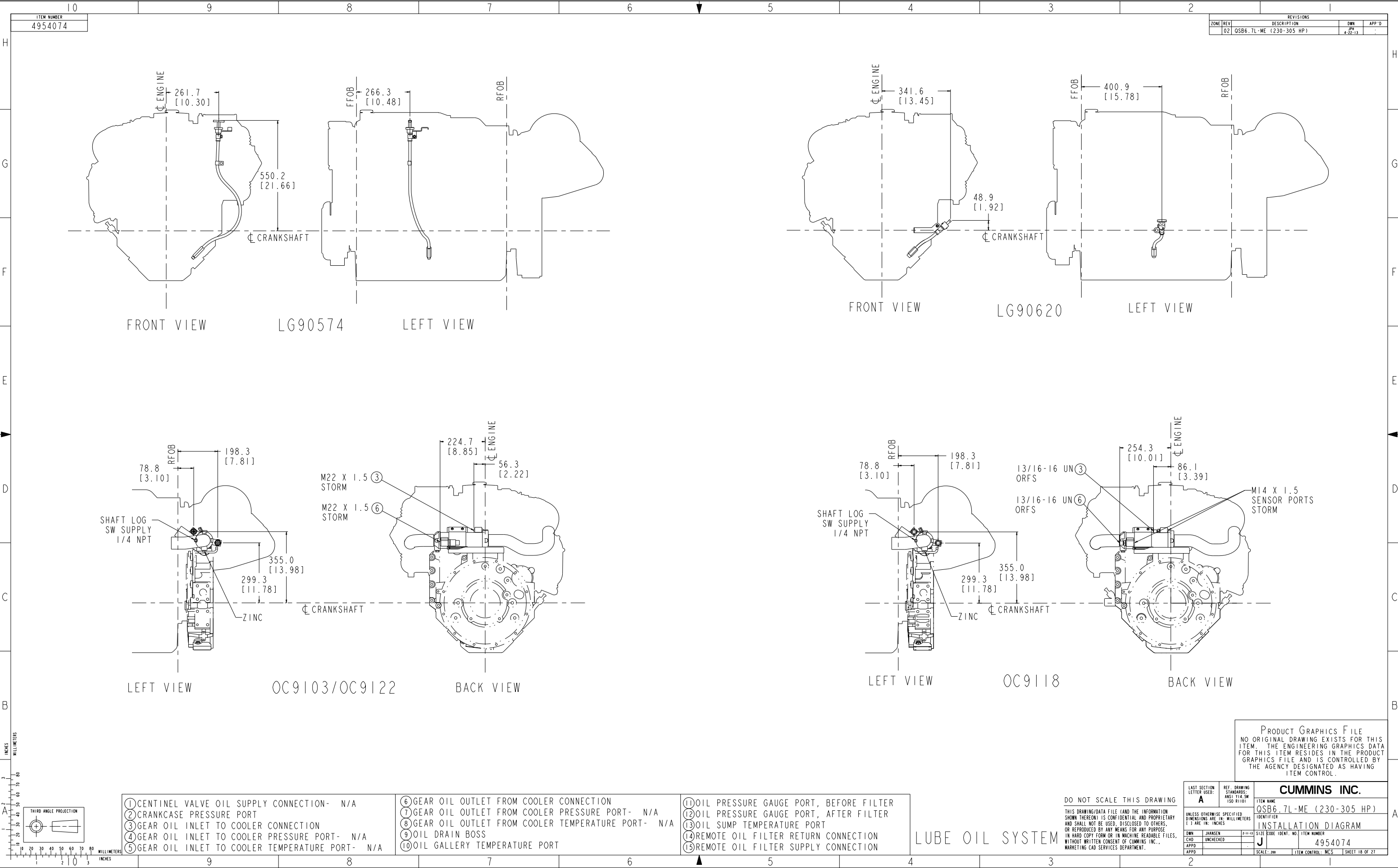


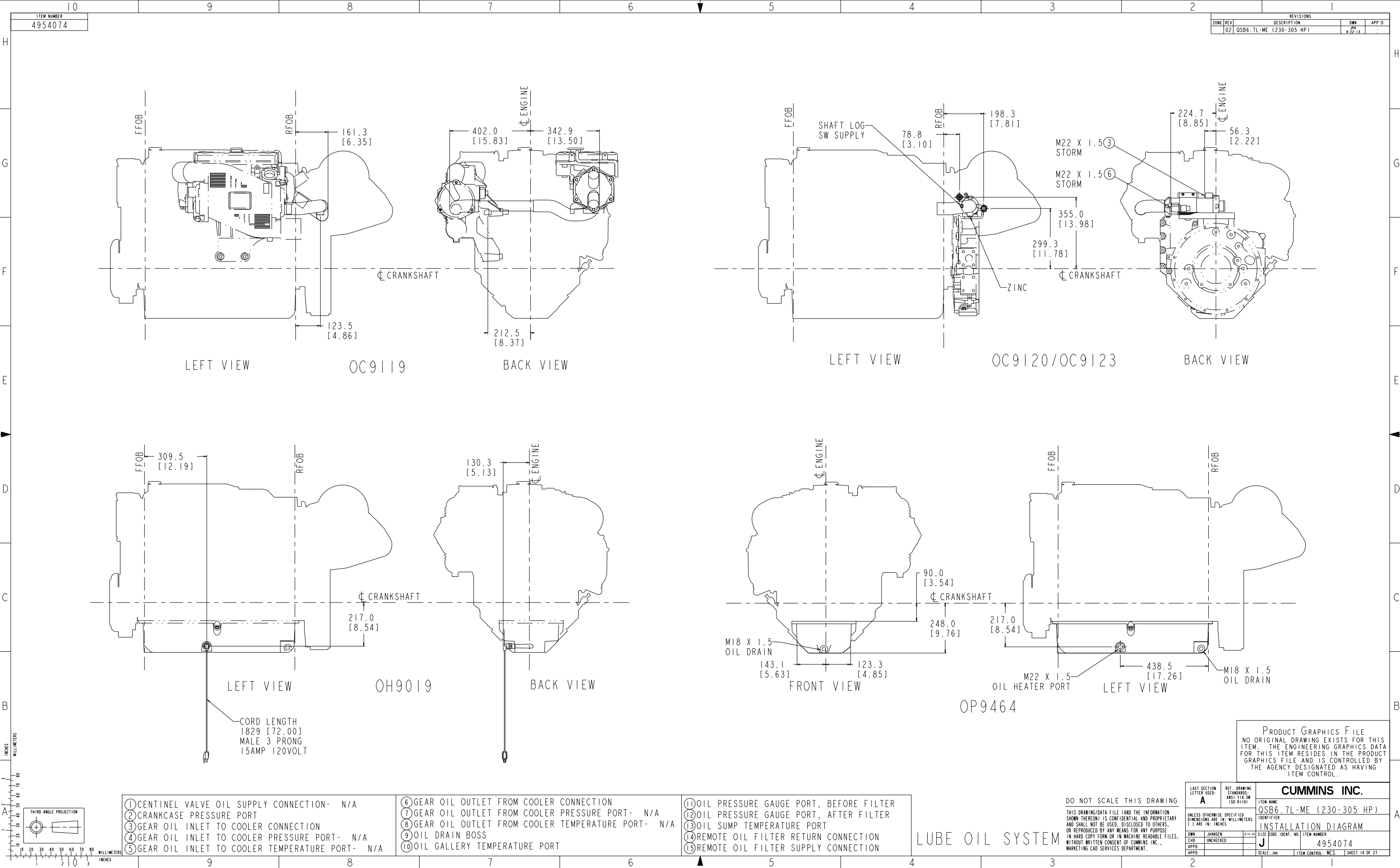


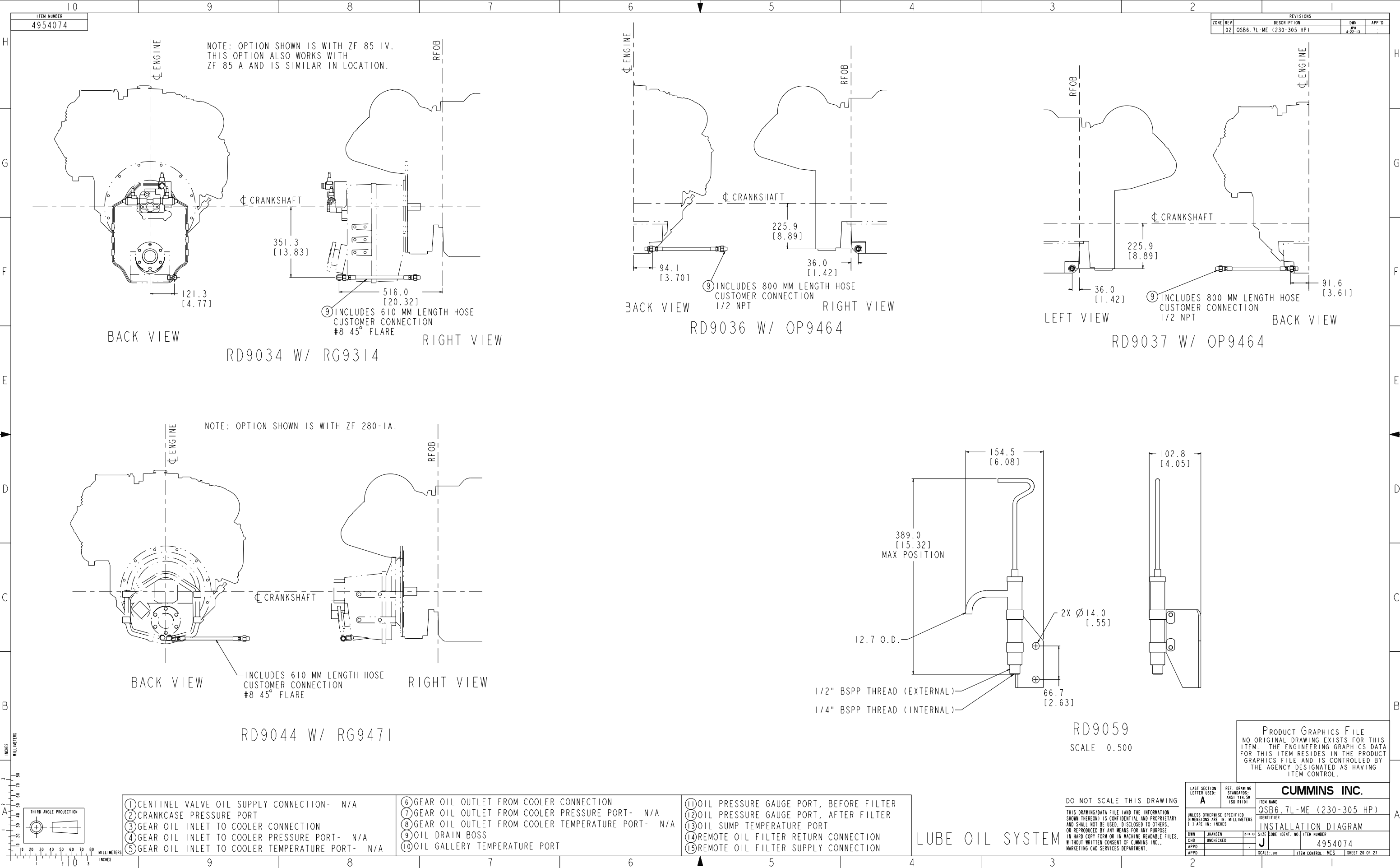












ITEM NUMBER
4954074

REVISIONS			
ZONE	REV	DESCRIPTION	APP'D
02	QSB6.7L-ME (230-305 HP)		

NOTE: OPTION SHOWN IS WITH ZF 85 IV.
THIS OPTION ALSO WORKS WITH
ZF 85 A AND IS SIMILAR IN LOCATION.

BACK VIEW

RIGHT VIEW

LEFT VIEW

BACK VIEW

RD9034 W/ RG9314

RD9036 W/ OP9464

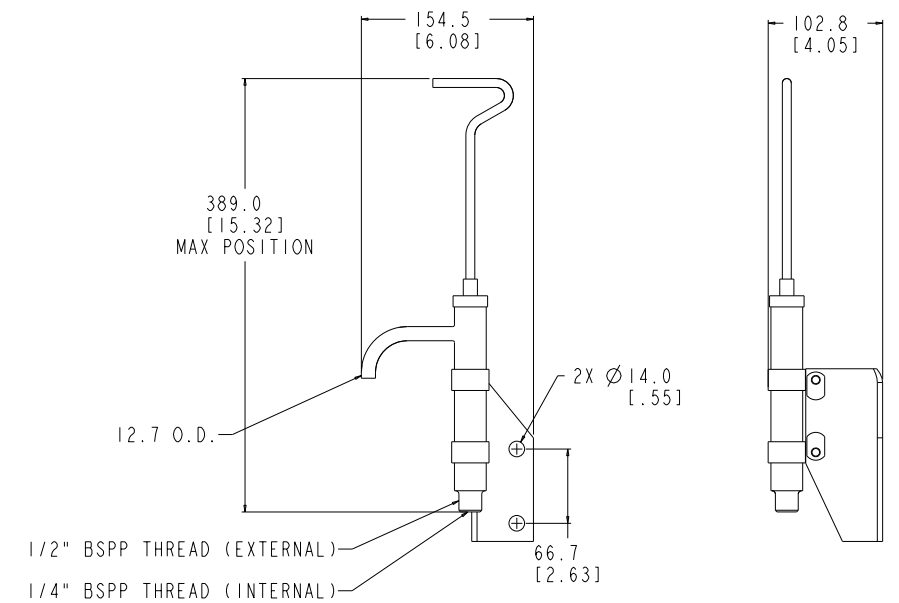
RD9037 W/ OP9464

NOTE: OPTION SHOWN IS WITH ZF 280-1A.

BACK VIEW

RIGHT VIEW

RD9044 W/ RG9471



RD9059

SCALE 0.500

PRODUCT GRAPHICS FILE
NO ORIGINAL DRAWING EXISTS FOR THIS
ITEM. THE ENGINEERING GRAPHICS DATA
FOR THIS ITEM RESIDES IN THE PRODUCT
GRAPHICS FILE AND IS CONTROLLED BY
THE AGENCY DESIGNATED AS HAVING
ITEM CONTROL.

- ① CENTINEL VALVE OIL SUPPLY CONNECTION- N/A
- ② CRANKCASE PRESSURE PORT
- ③ GEAR OIL INLET TO COOLER CONNECTION
- ④ GEAR OIL INLET TO COOLER PRESSURE PORT- N/A
- ⑤ GEAR OIL INLET TO COOLER TEMPERATURE PORT- N/A

- ⑥ GEAR OIL OUTLET FROM COOLER CONNECTION
- ⑦ GEAR OIL OUTLET FROM COOLER PRESSURE PORT- N/A
- ⑧ GEAR OIL OUTLET FROM COOLER TEMPERATURE PORT- N/A
- ⑨ OIL DRAIN BOSS
- ⑩ OIL GALLERY TEMPERATURE PORT

- ⑪ OIL PRESSURE GAUGE PORT, BEFORE FILTER
- ⑫ OIL PRESSURE GAUGE PORT, AFTER FILTER
- ⑬ OIL SUMP TEMPERATURE PORT
- ⑭ REMOTE OIL FILTER RETURN CONNECTION
- ⑮ REMOTE OIL FILTER SUPPLY CONNECTION

LUBE OIL SYSTEM

DO NOT SCALE THIS DRAWING
THIS DRAWING/DATA FILE (AND THE INFORMATION
SHOWN THEREON) IS CONFIDENTIAL AND PROPRIETARY
AND SHALL NOT BE USED, DISCLOSED TO OTHERS,
OR REPRODUCED BY ANY MEANS FOR ANY PURPOSE
IN HARD COPY FORM OR IN MACHINE READABLE FILES,
WITHOUT WRITTEN CONSENT OF CUMMINS INC.,
MARKETING CAD SERVICES DEPARTMENT.

LAST SECTION LETTER USED: A		REF. DRAWING STANDARDS: ANSI Y14.5M ISO 81101	ITEM NAME CUMMINS INC.	
UNLESS OTHERWISE SPECIFIED DIMENSIONS ARE IN: MILLIMETERS 1 3 ARE IN: INCHES		IDENTIFIER J	ITEM NUMBER 4954074	
DWN: JHANSEN	2-11-10	SIZE CODE IDENT. NO.	ITEM CONTROL: MCS	SHEET 20 OF 27
CHD: UNCHECKED				
APPD:				

