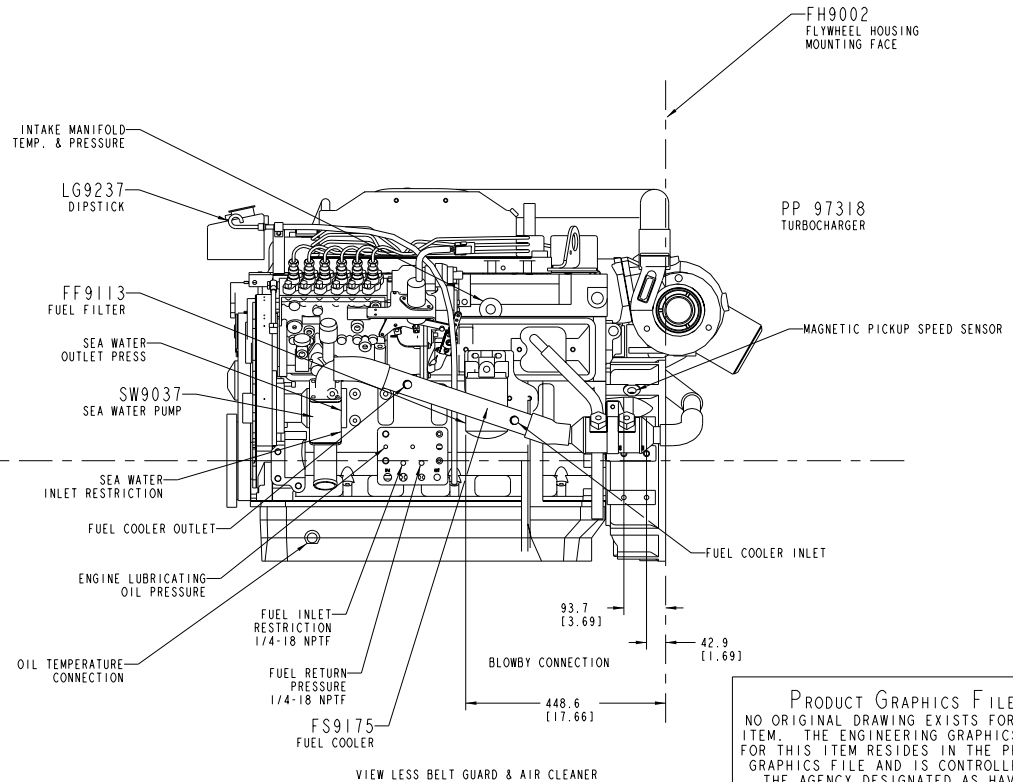
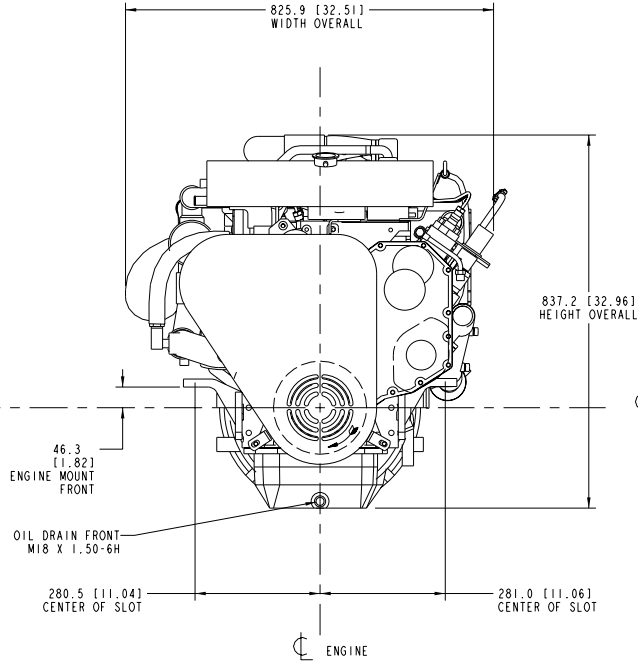
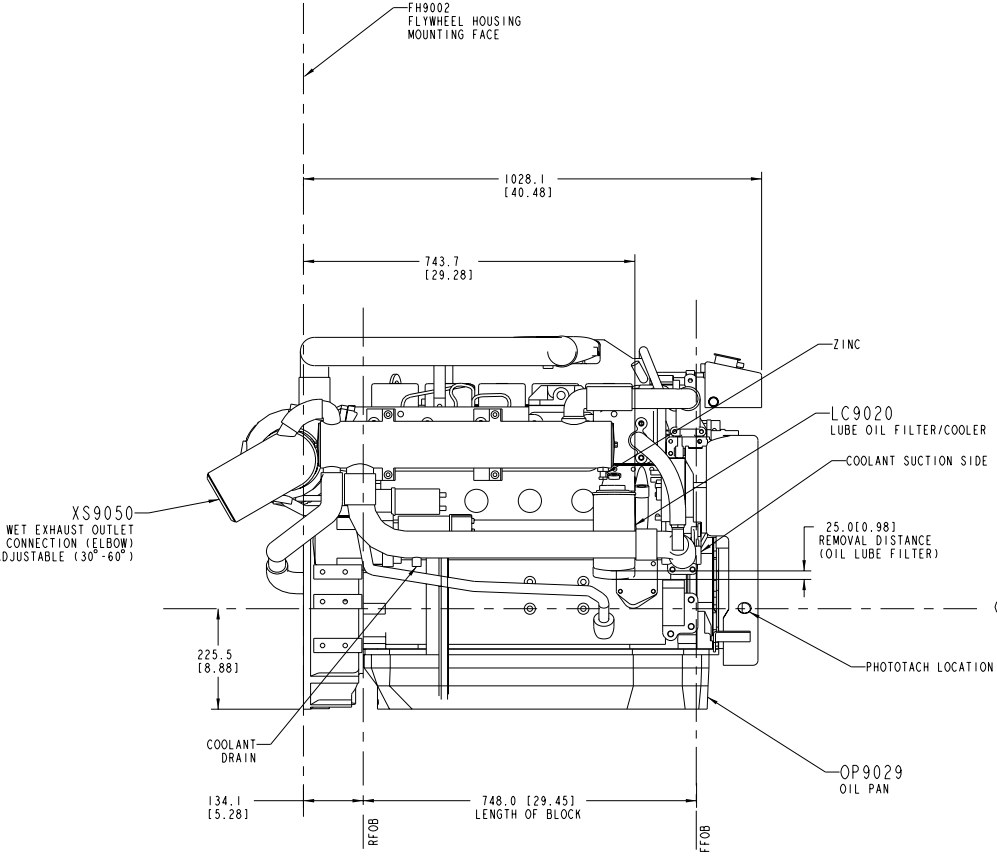
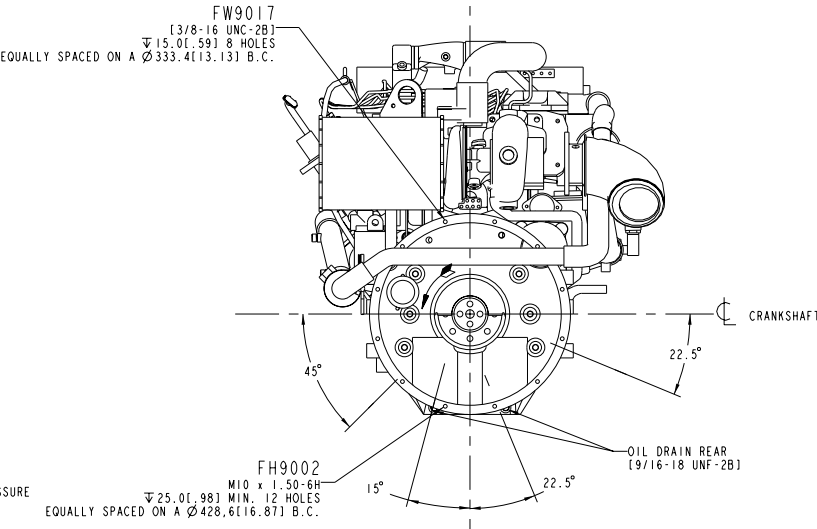
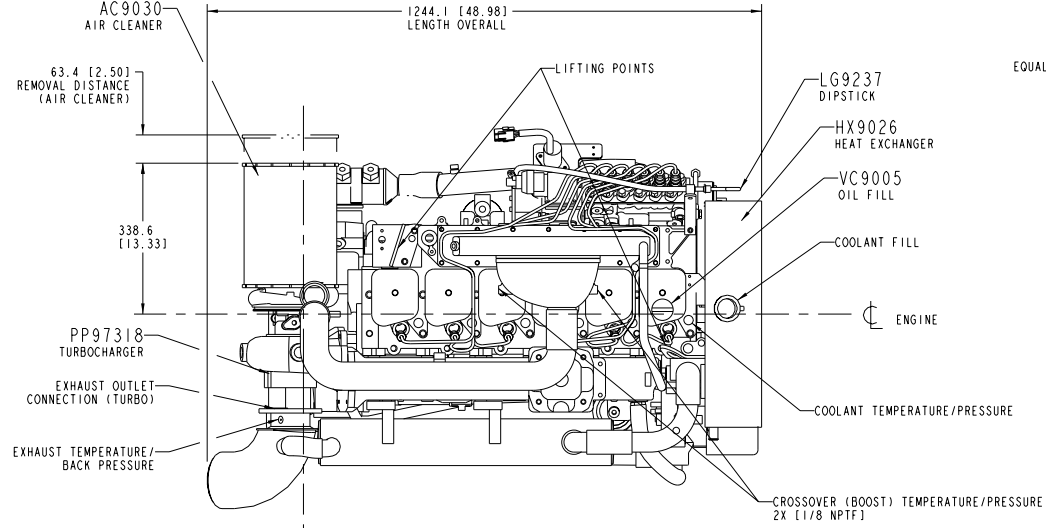


ITEM NUMBER  
3884673

REVISIONS			
ZONE	REV	DESCRIPTION	APP'D



PRODUCT GRAPHICS FILE  
NO ORIGINAL DRAWING EXISTS FOR THIS ITEM. THE ENGINEERING GRAPHICS DATA FOR THIS ITEM RESIDES IN THE PRODUCT GRAPHICS FILE AND IS CONTROLLED BY THE AGENCY DESIGNATED AS HAVING ITEM CONTROL.

METRIC

DO NOT SCALE THIS DRAWING

PRELIMINARY  
UNCHECKED

THIS DRAWING/DATA FILE (AND THE INFORMATION SHOWN THEREON) IS CONFIDENTIAL AND PROPRIETARY AND SHALL NOT BE USED, DISCLOSED TO OTHERS, OR REPRODUCED BY ANY MEANS FOR ANY PURPOSE IN HARD COPY FORM OR IN MACHINE READABLE FILES, WITHOUT WRITTEN CONSENT OF CUMMINS ENGINE COMPANY, INC., MARKETING CAD SERVICES DEPARTMENT.

ENGINE SERVICE TEST PORTS		
BLOWBY CONNECTION Ø19.7 [0.87] ID (HOSE)	FUEL RETURN PRESSURE: [1/4-18 NPTF]	SEA WATER INLET RESTRICTION: [1/4-18 NPTF]
BOOST PRESSURE 2X [1/8 NPTF]	INTAKE MANIFOLD PRESSURE: [1/2-14 NPTF]	SEA WATER OUTLET PRESSURE: [1/4-18 NPTF]
BOOST TEMPERATURE 2X [1/8 NPTF]	INTAKE MANIFOLD TEMPERATURE: [1/2-14 NPTF]	
COOLANT PRESSURE SIDE: [1/2-14 NPTF]	MAGNETIC PICKUP SPEED SENSOR: [3/4-16 UNF-2B]	
COOLANT SUCTION SIDE: [1/2-14 NPTF]	OIL DRAIN FRONT: M18 x 1.50-6H	
COOLANT TEMPERATURE: [1/2-14 NPTF]	OIL DRAIN REAR: 2X [9/16 UNF-2B]	
EXHAUST TEMPERATURE/BACK PRESSURE: [1/8 NPTF]	OIL PRESSURE: 2X [1/8-14 NPTF S2]	
FUEL INLET RESTRICTION [1/4-18 NPTF]	PHOTOTACH LOCATION	

LAST SECTION LETTER USED:	REF. DRAWING STANDARDS: ANSI Y14.5M ISO 81101	CUMMINS ENGINE COMPANY, INC.	
UNLESS OTHERWISE SPECIFIED DIMENSIONS ARE IN: MILLIMETERS ( ) ARE IN: INCHES	ITEM NAME	6BTA5.9-M(JW)(270,260.220HP)	
DWN: CDT/FAULKNER	IDENTIFIER	INSTALLATION DIAGRAM	
CHD: .	SIZE	COOLING SYSTEM ITEM NUMBER	
APPD: .	J	HEAT EXCHANGER COOLED	3884673
APPD: .	SCALE: 1:5	ITEM CONTROL:	SHEET 3 OF 4

