

ITEM NUMBER
4954063

REVISIONS			
ZONE	REV	DESCRIPTION	APP'D
01	OSB6.7L-ME SUBSYSTEM		

AF9096 W/
DA9453

AF9121 W/
DA9452

AF9134 W/
DA9451

DR9024

PRODUCT GRAPHICS FILE
NO ORIGINAL DRAWING EXISTS FOR THIS ITEM. THE ENGINEERING GRAPHICS DATA FOR THIS ITEM RESIDES IN THE PRODUCT GRAPHICS FILE AND IS CONTROLLED BY THE AGENCY DESIGNATED AS HAVING ITEM CONTROL.

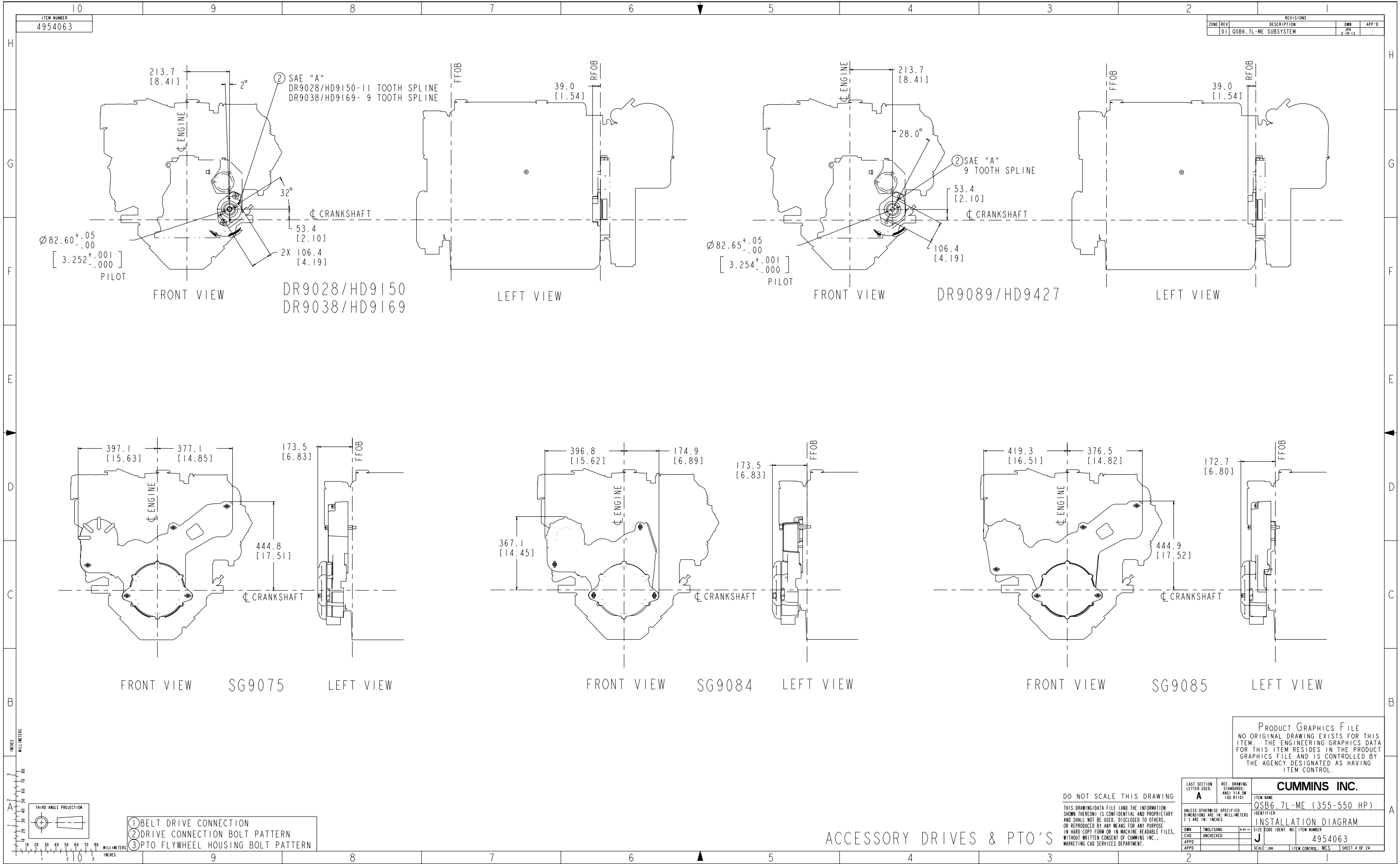
LAST SECTION LETTER USED: A		REF. DRAWING STANDARDS: ANSI Y14.5M ISO 81101	
UNLESS OTHERWISE SPECIFIED DIMENSIONS ARE IN: MILLIMETERS () ARE IN: INCHES		CUMMINS INC.	
DWN: TWOTANG		ITEM NAME	
CHD: UNCHECKED		IDENTIFIER	
APPD:		QSB6.7L-ME (355-550 HP)	
		INSTALLATION DIAGRAM	
		SIZE CODE IDENT. NO. ITEM NUMBER	
		J 4954063	
		SCALE: 200 ITEM CONTROL: MCS SHEET 3 OF 24	

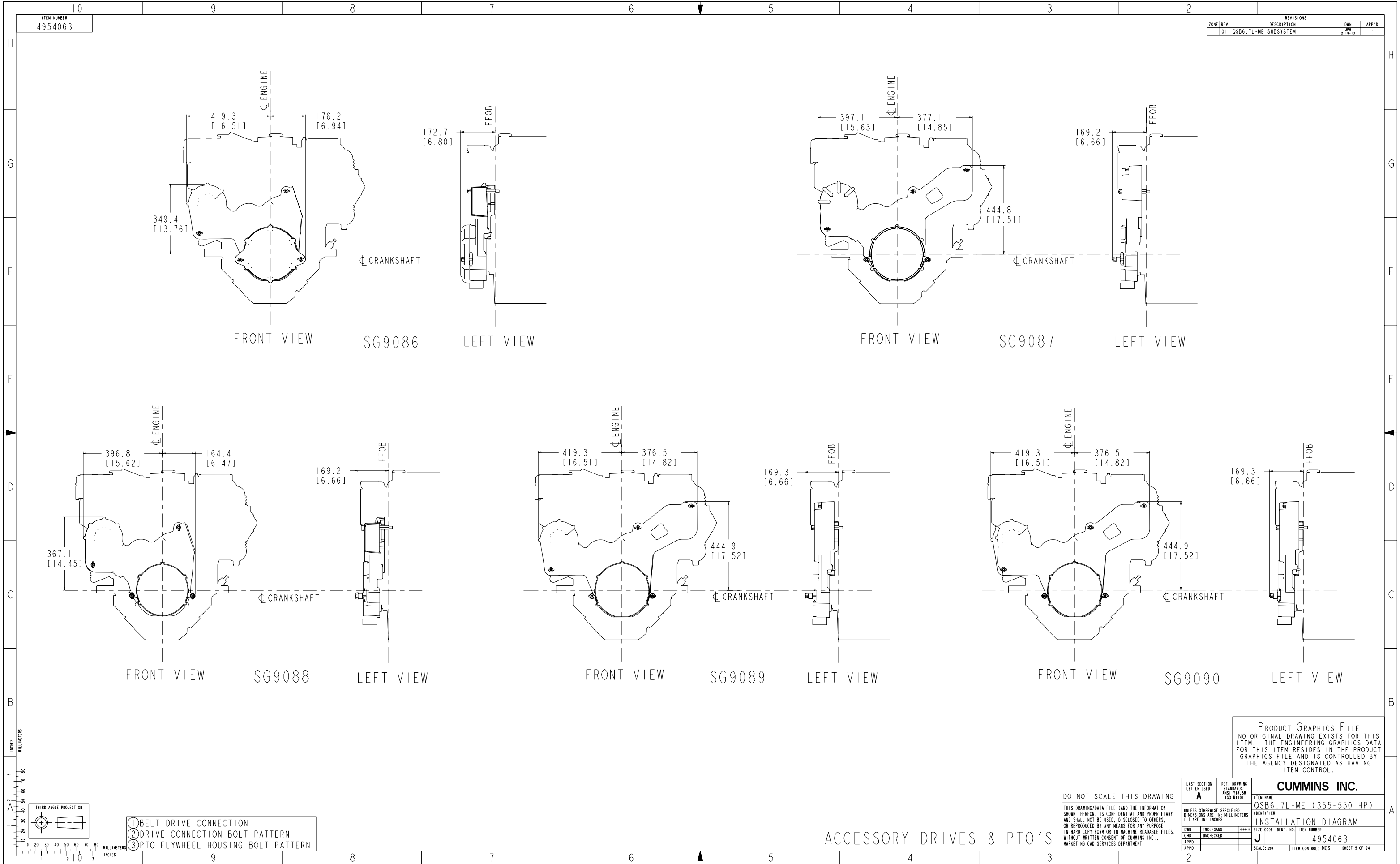
DO NOT SCALE THIS DRAWING

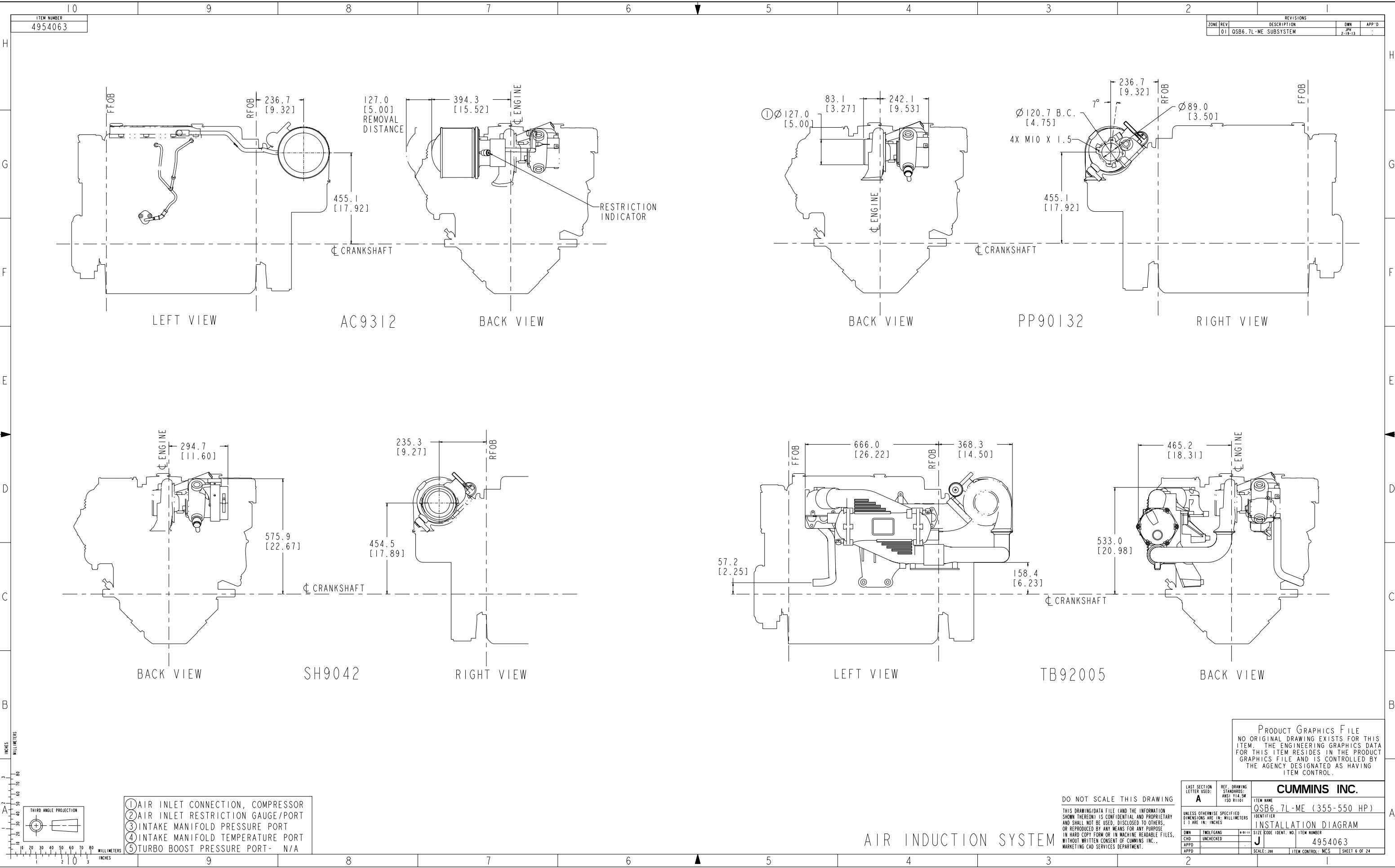
THIS DRAWING/DATA FILE (AND THE INFORMATION SHOWN THEREON) IS CONFIDENTIAL AND PROPRIETARY AND SHALL NOT BE USED, DISCLOSED TO OTHERS, OR REPRODUCED BY ANY MEANS FOR ANY PURPOSE IN HARD COPY FORM OR IN MACHINE READABLE FILES, WITHOUT WRITTEN CONSENT OF CUMMINS INC., MARKETING CAD SERVICES DEPARTMENT.

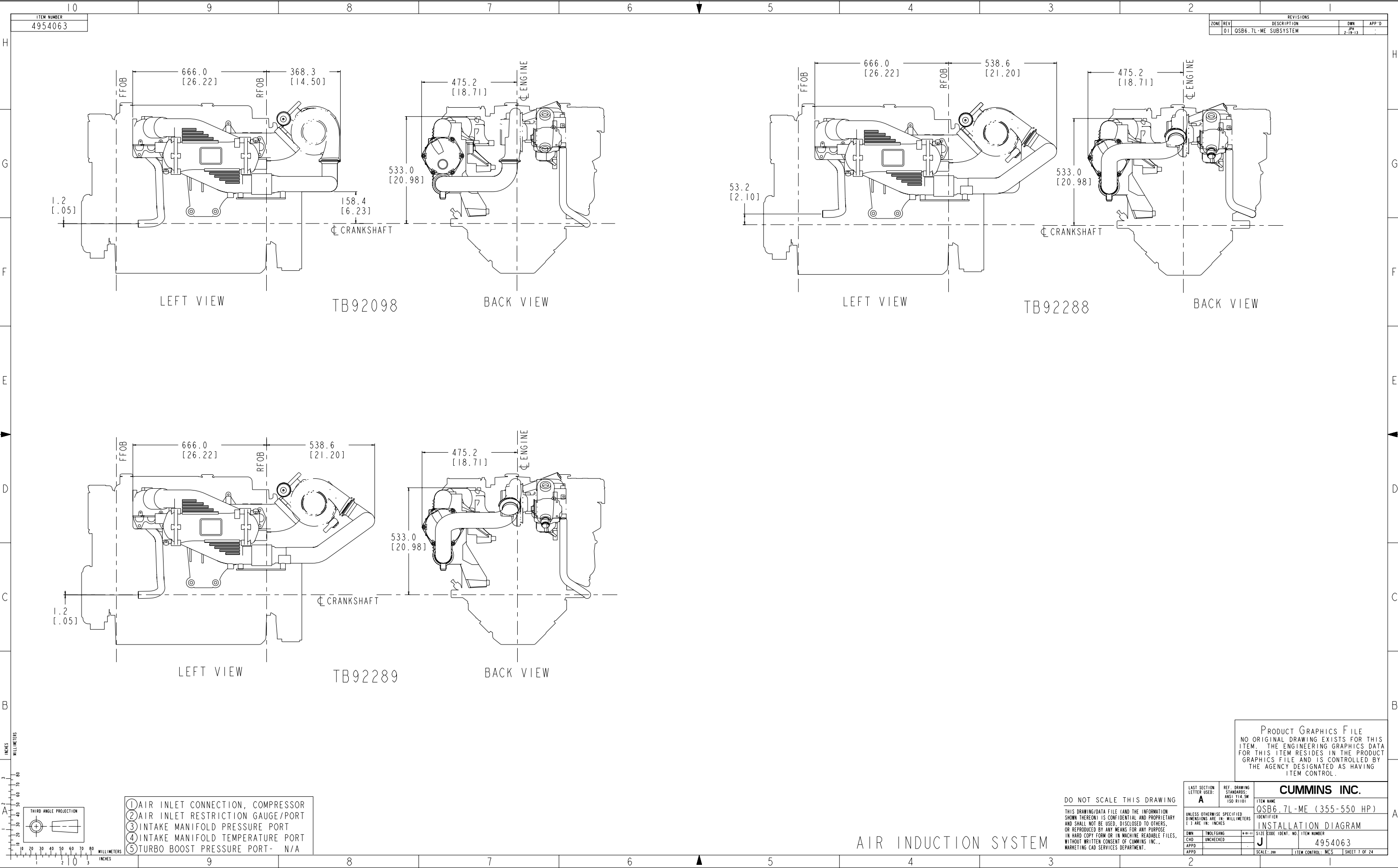
ACCESSORY DRIVES & PTO'S

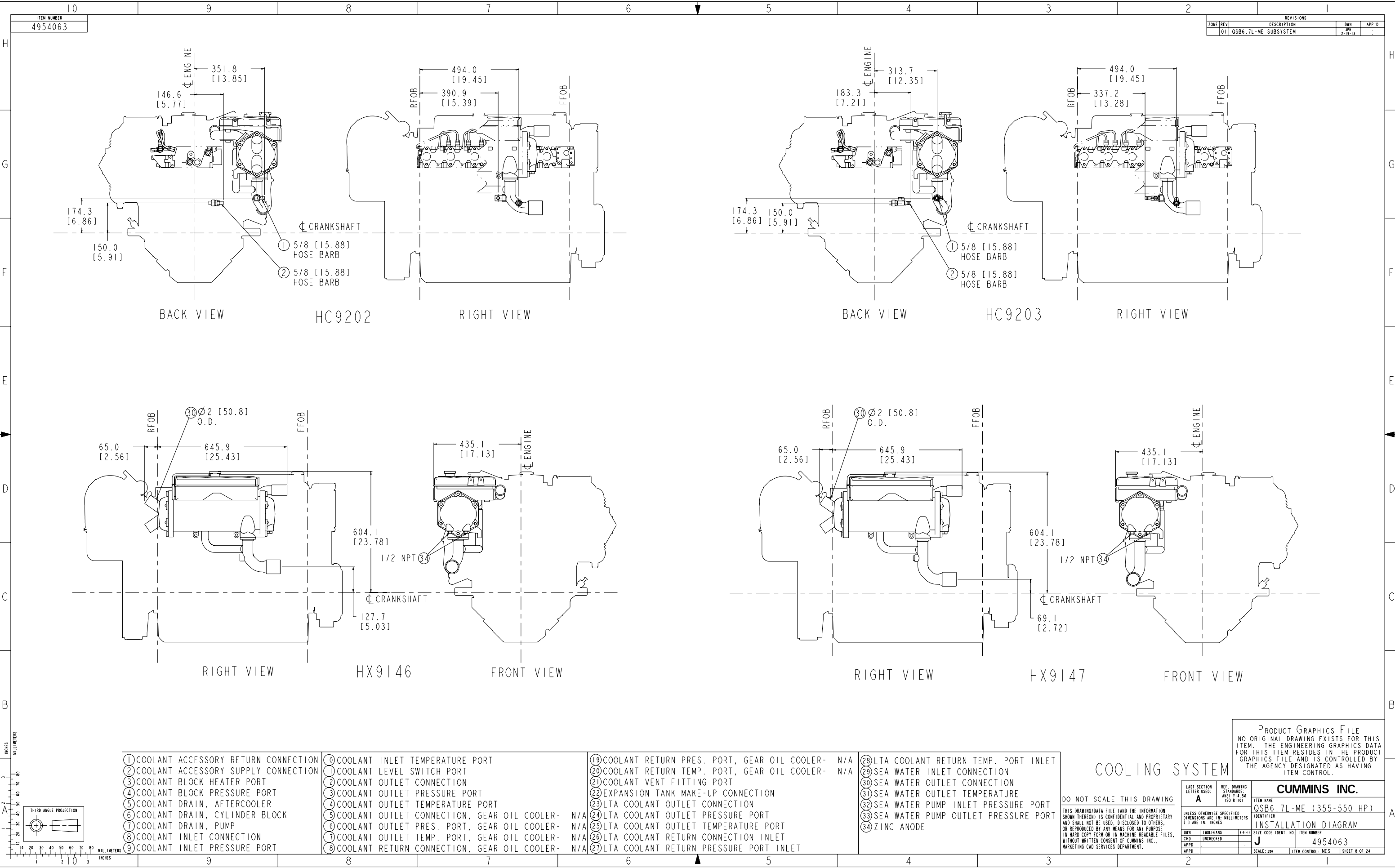
- ① BELT DRIVE CONNECTION
- ② DRIVE CONNECTION BOLT PATTERN
- ③ PTO FLYWHEEL HOUSING BOLT PATTERN

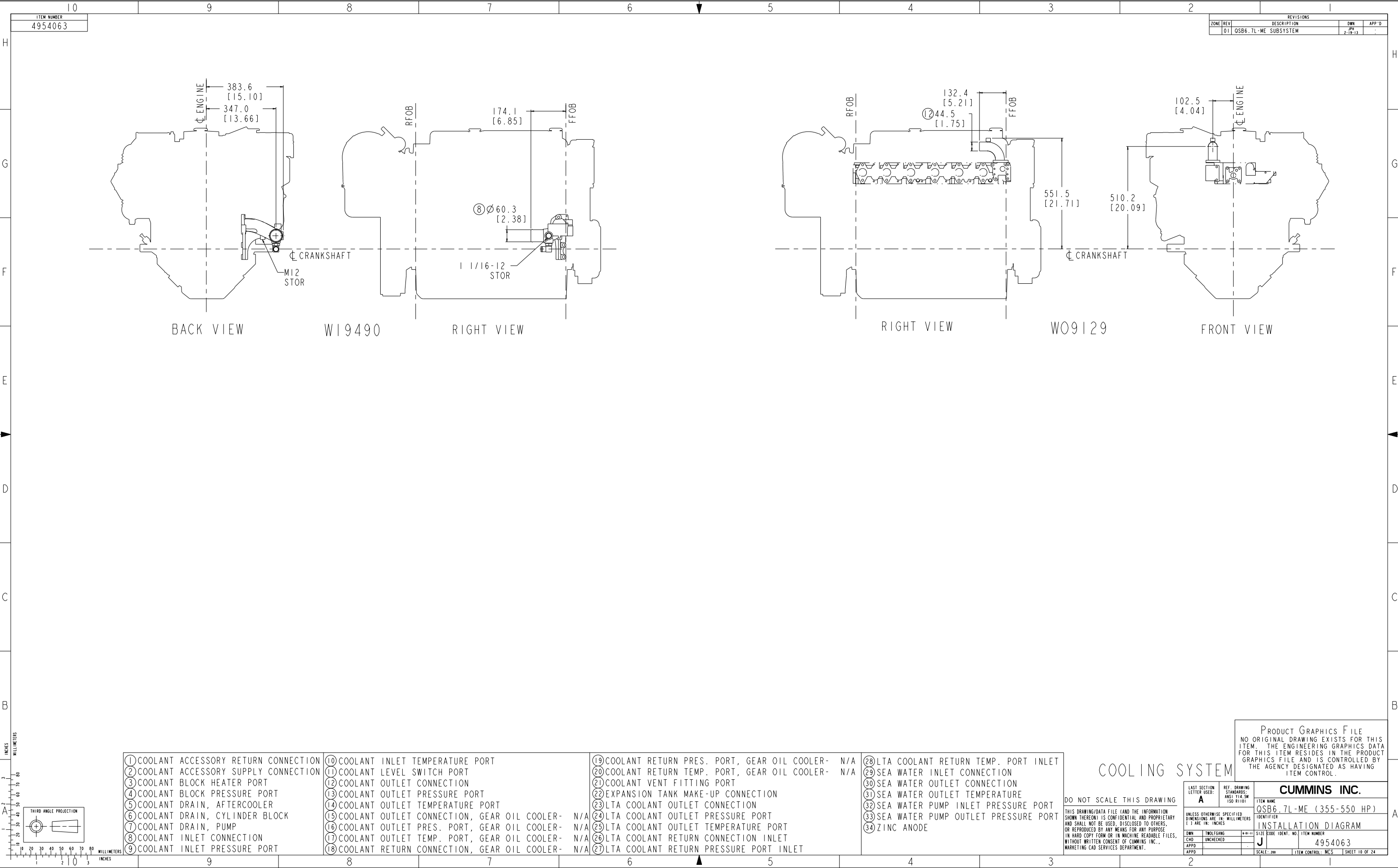


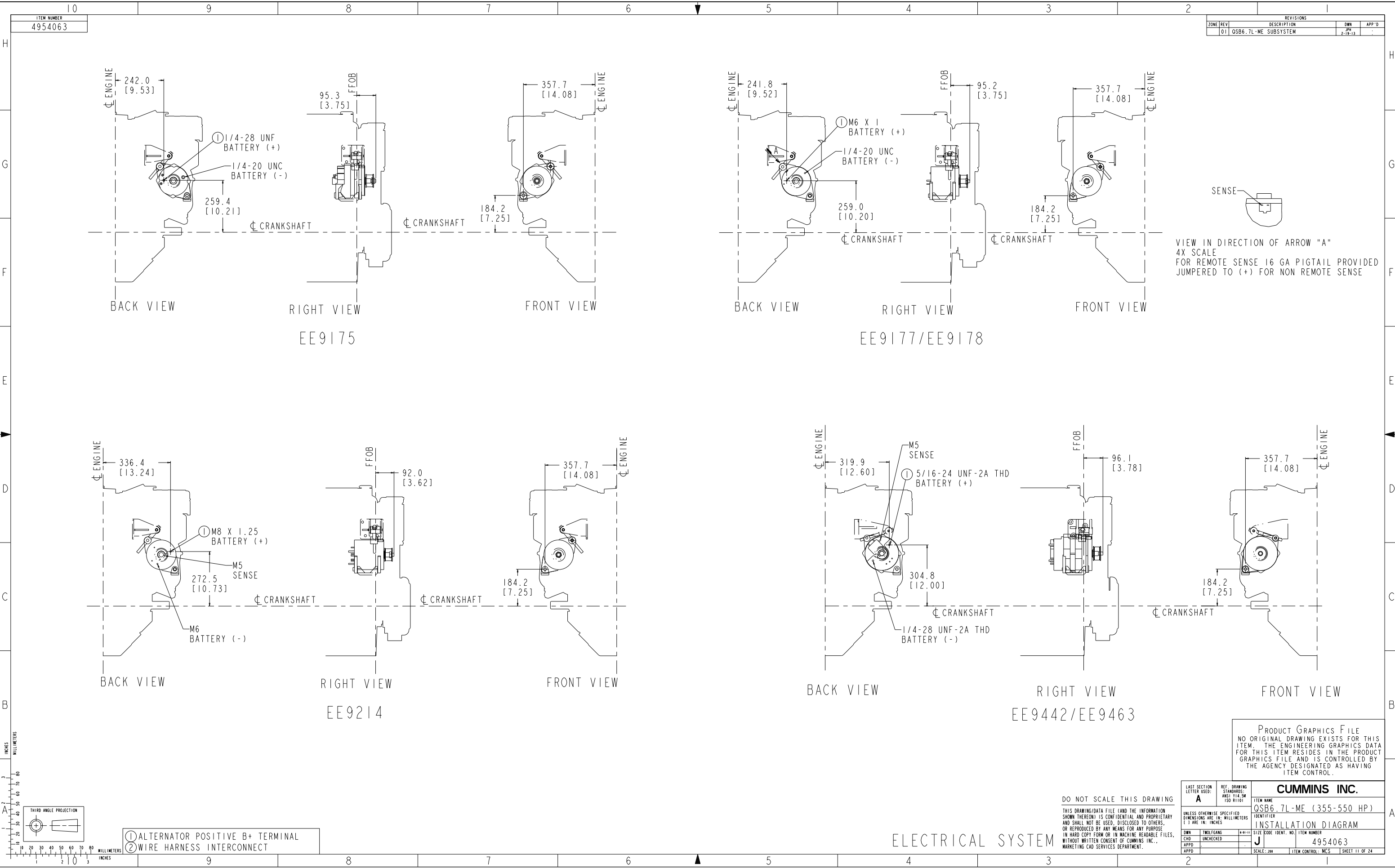


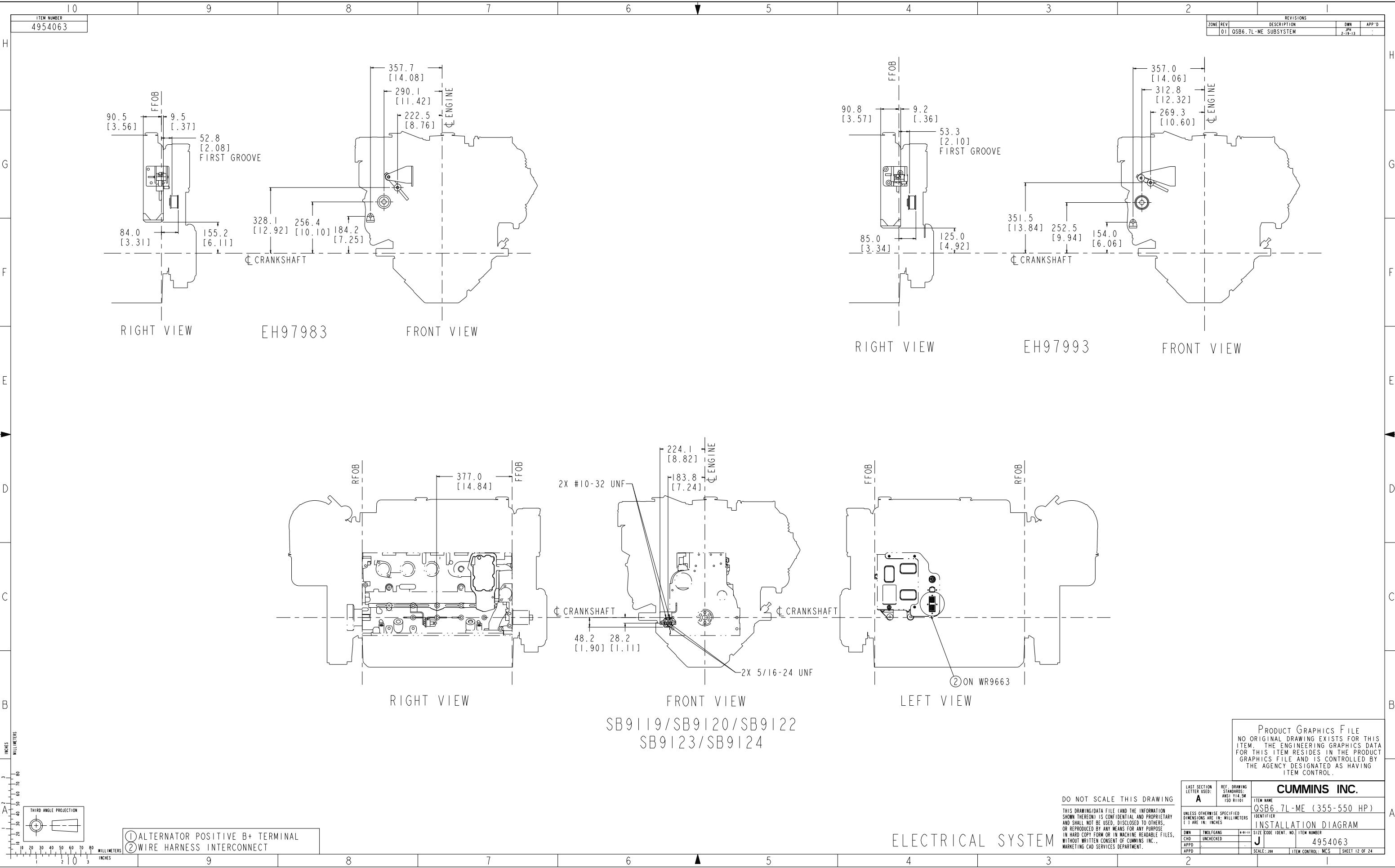


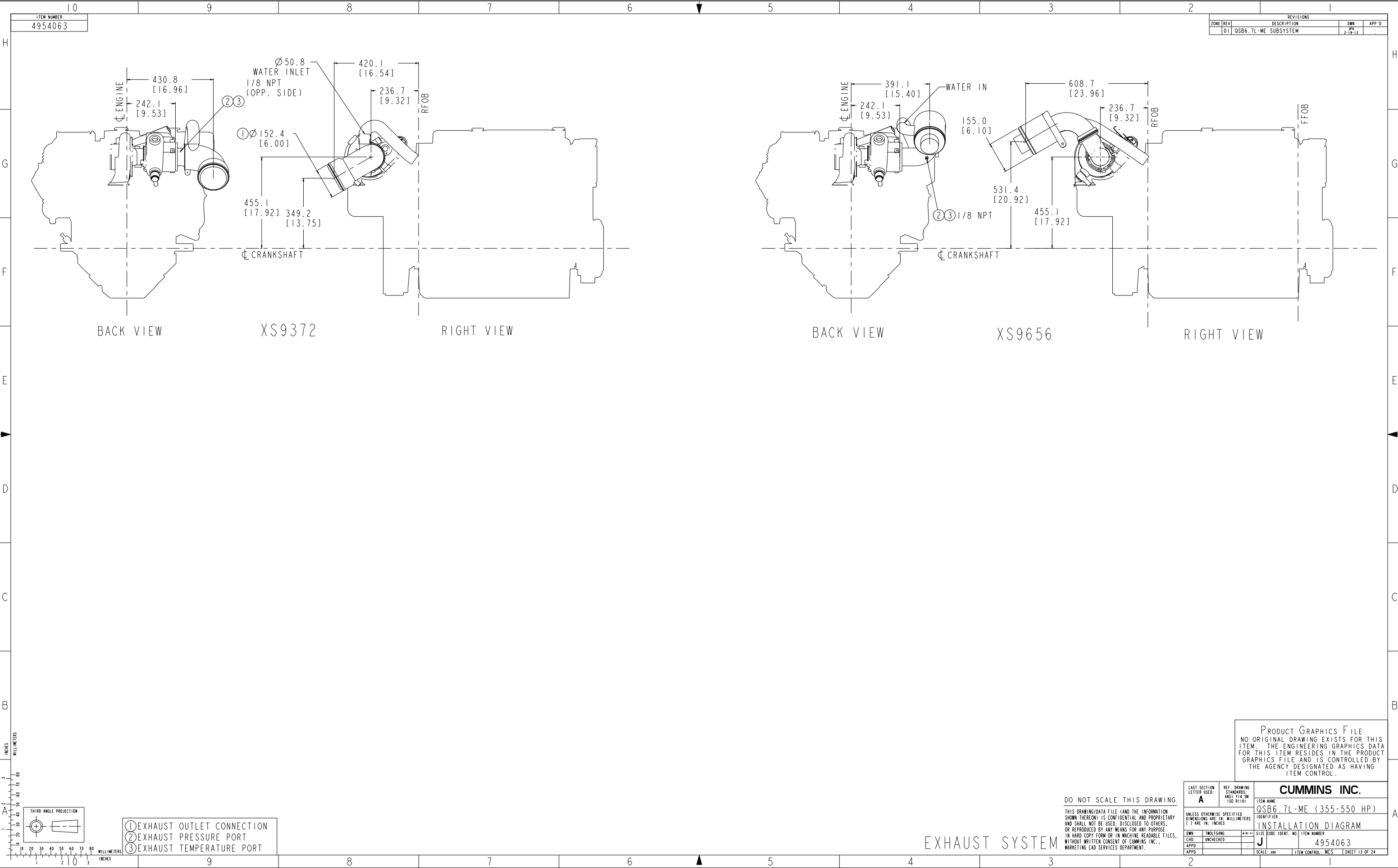






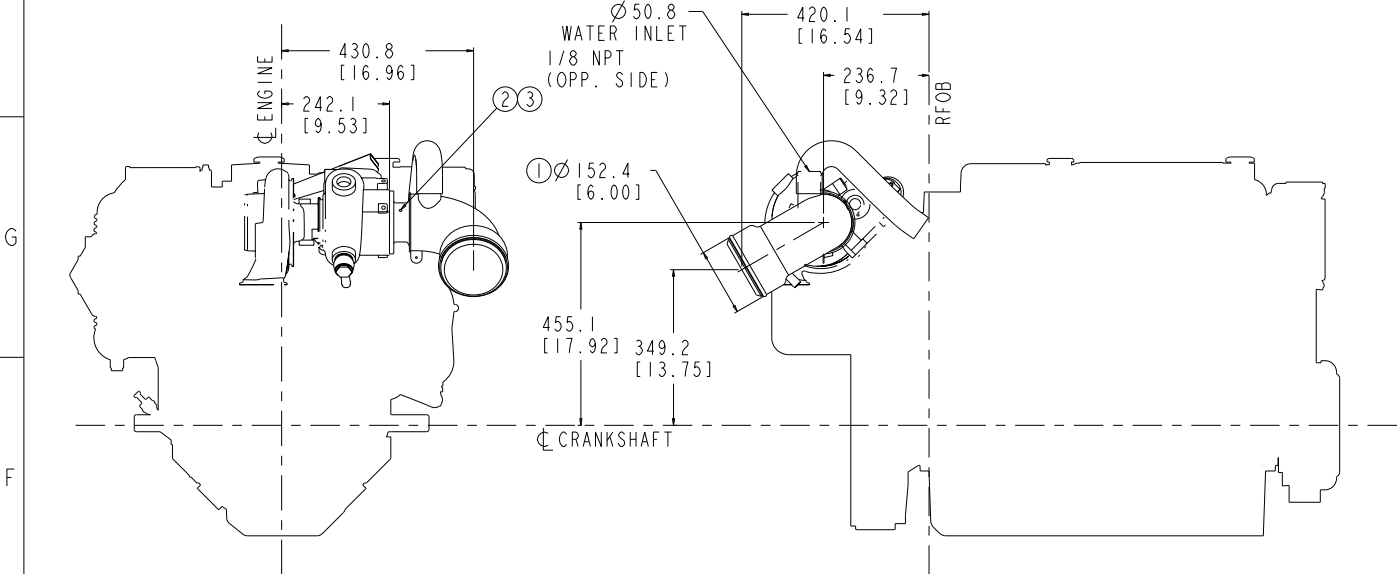






ITEM NUMBER
4954063

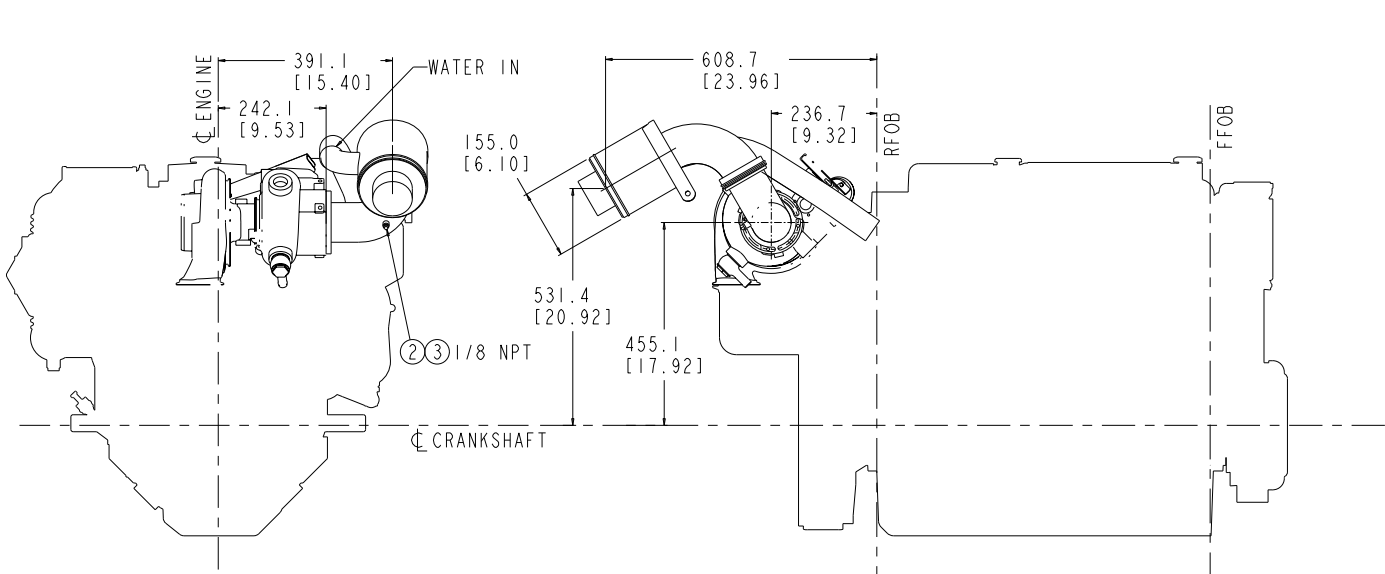
REVISIONS			
ZONE	REV	DESCRIPTION	APP'D
01		QSB6.7L-ME SUBSYSTEM	JPP 2-19-13



BACK VIEW

XS9372

RIGHT VIEW

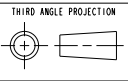


BACK VIEW

XS9656

RIGHT VIEW

INCHES
MILLIMETERS



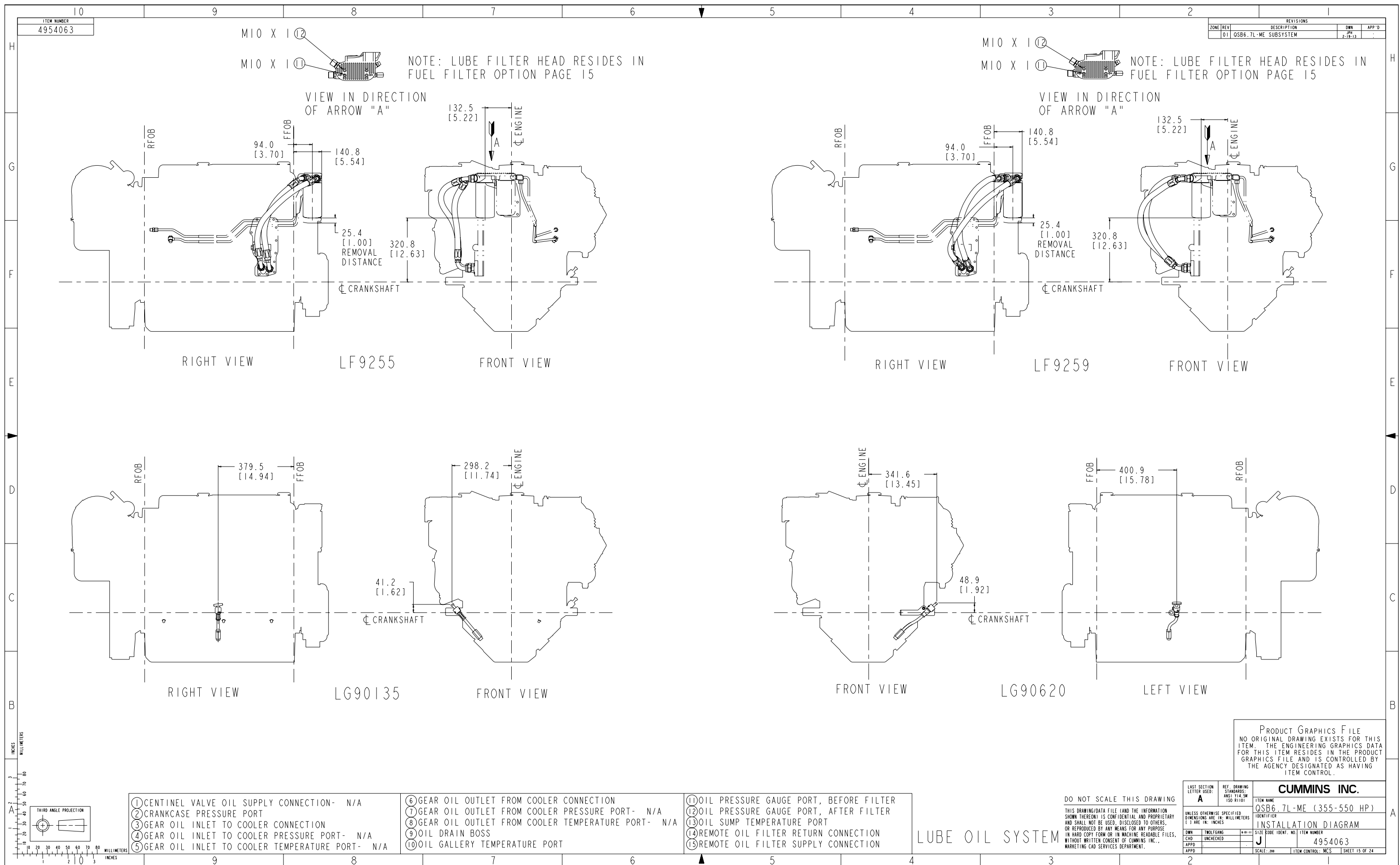
- 1 EXHAUST OUTLET CONNECTION
- 2 EXHAUST PRESSURE PORT
- 3 EXHAUST TEMPERATURE PORT

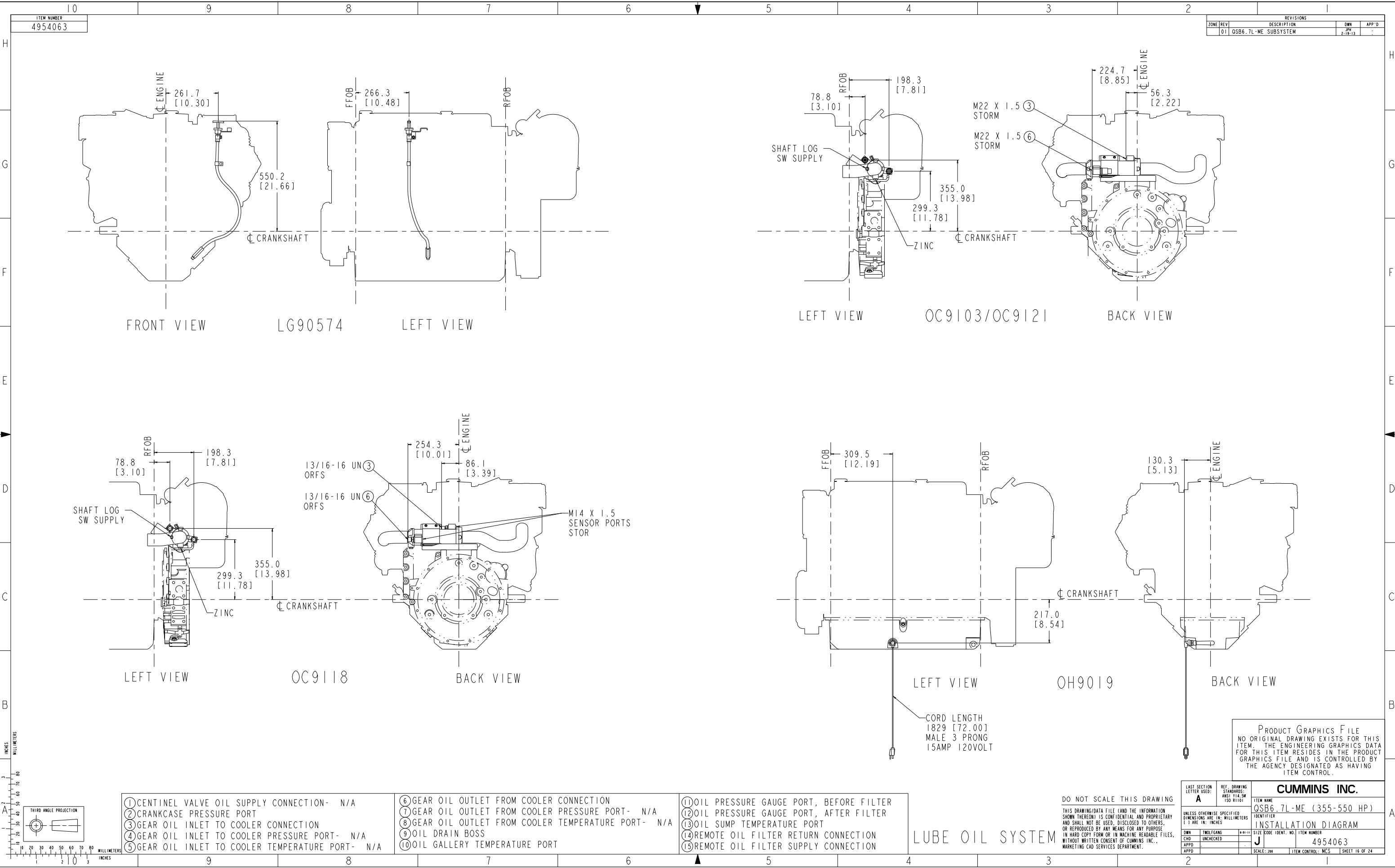
DO NOT SCALE THIS DRAWING
THIS DRAWING/DATA FILE (AND THE INFORMATION SHOWN THEREON) IS CONFIDENTIAL AND PROPRIETARY AND SHALL NOT BE USED, DISCLOSED TO OTHERS, OR REPRODUCED BY ANY MEANS FOR ANY PURPOSE IN HARD COPY FORM OR IN MACHINE READABLE FILES, WITHOUT WRITTEN CONSENT OF CUMMINS INC., MARKETING CAD SERVICES DEPARTMENT.

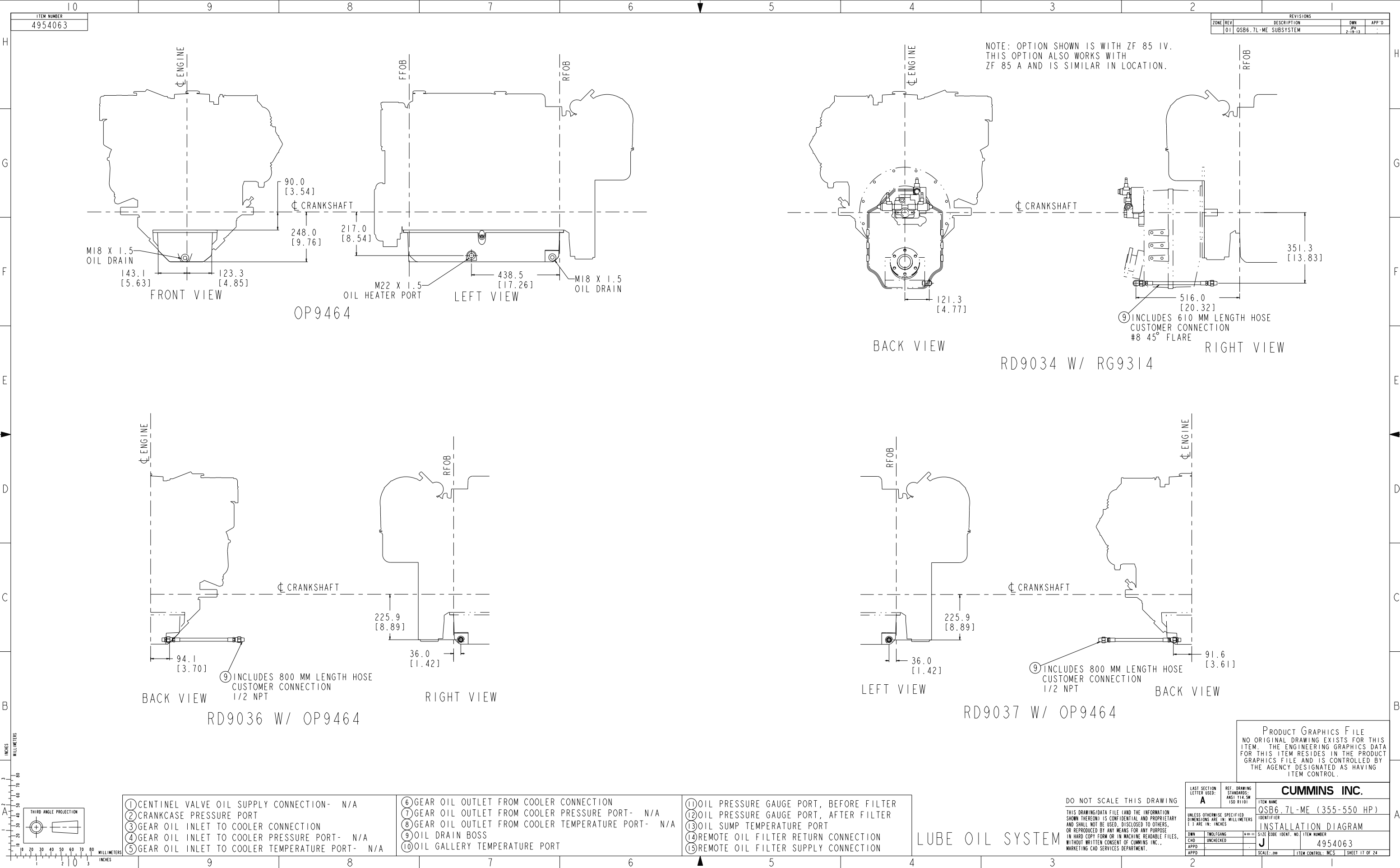
EXHAUST SYSTEM

PRODUCT GRAPHICS FILE
NO ORIGINAL DRAWING EXISTS FOR THIS ITEM. THE ENGINEERING GRAPHICS DATA FOR THIS ITEM RESIDES IN THE PRODUCT GRAPHICS FILE AND IS CONTROLLED BY THE AGENCY DESIGNATED AS HAVING ITEM CONTROL.

LAST SECTION LETTER USED: A		REF. DRAWING STANDARDS: ANSI Y14.5M ISO 81101		ITEM NAME CUMMINS INC.	
UNLESS OTHERWISE SPECIFIED DIMENSIONS ARE IN: MILLIMETERS 1 3 ARE IN: INCHES		IDENTIFIER QSB6.7L-ME (355-550 HP)		ITEM NUMBER 4954063	
DWN	TWO/ENG	4-41-13	SIZE CODE IDENT. NO.	J	ITEM CONTROL: MCS
CHD	UNCHECKED				
APPD					
SCALE: 200		ITEM CONTROL: MCS		SHEET 13 OF 24	







ITEM NUMBER
4954063

REVISIONS			
ZONE	REV	DESCRIPTION	APP'D
01	OSB6.7L-ME SUBSYSTEM		

NOTE: OPTION SHOWN IS WITH ZF 85 IV.
THIS OPTION ALSO WORKS WITH
ZF 85 A AND IS SIMILAR IN LOCATION.

OP9464

RD9034 W/ RG9314

RD9036 W/ OP9464

RD9037 W/ OP9464

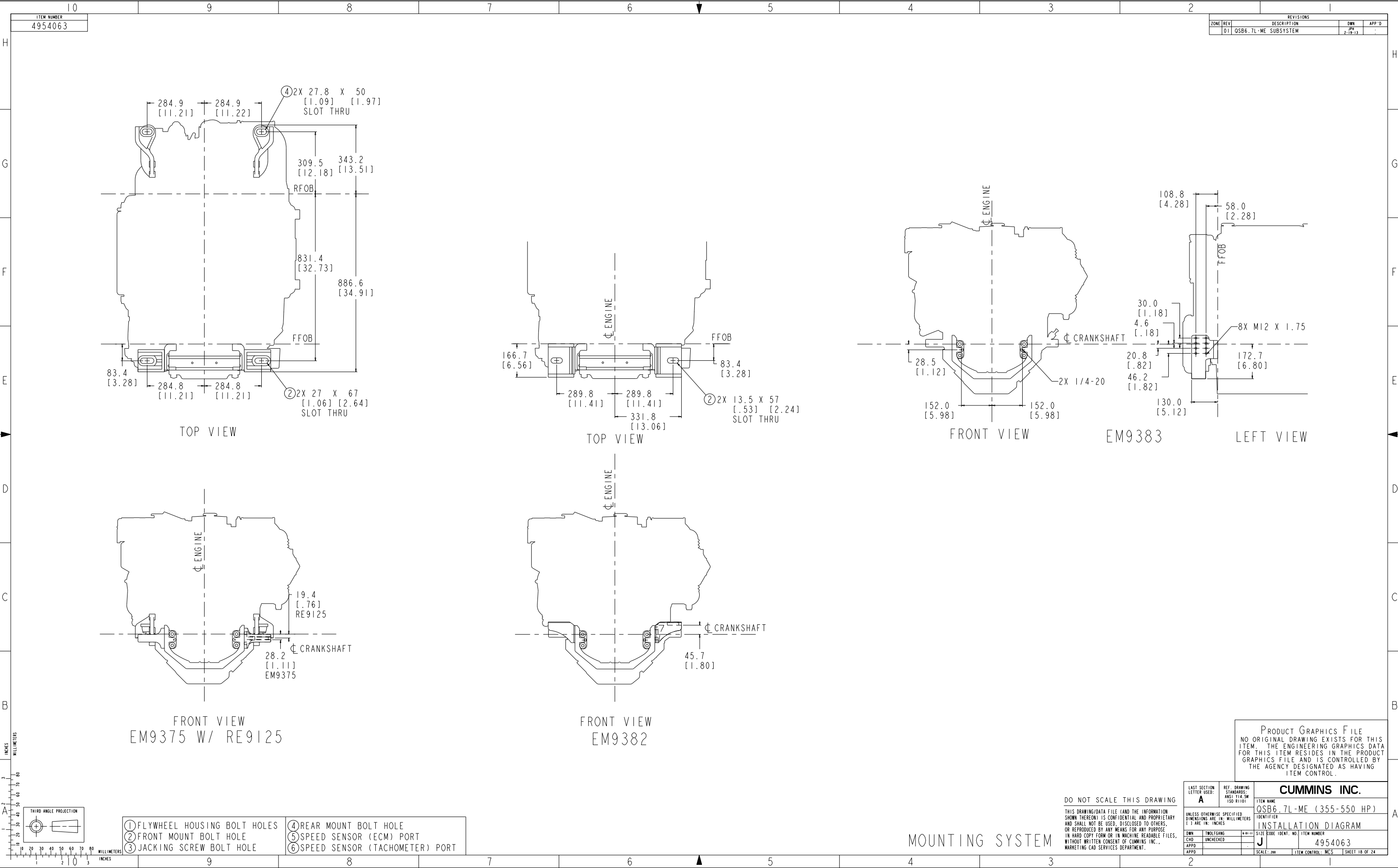
PRODUCT GRAPHICS FILE
NO ORIGINAL DRAWING EXISTS FOR THIS
ITEM. THE ENGINEERING GRAPHICS DATA
FOR THIS ITEM RESIDES IN THE PRODUCT
GRAPHICS FILE AND IS CONTROLLED BY
THE AGENCY DESIGNATED AS HAVING
ITEM CONTROL.

- | | | |
|--|---|--|
| ① CENTINEL VALVE OIL SUPPLY CONNECTION- N/A | ⑥ GEAR OIL OUTLET FROM COOLER CONNECTION | ⑪ OIL PRESSURE GAUGE PORT, BEFORE FILTER |
| ② CRANKCASE PRESSURE PORT | ⑦ GEAR OIL OUTLET FROM COOLER PRESSURE PORT- N/A | ⑫ OIL PRESSURE GAUGE PORT, AFTER FILTER |
| ③ GEAR OIL INLET TO COOLER CONNECTION | ⑧ GEAR OIL OUTLET FROM COOLER TEMPERATURE PORT- N/A | ⑬ OIL SUMP TEMPERATURE PORT |
| ④ GEAR OIL INLET TO COOLER PRESSURE PORT- N/A | ⑨ OIL DRAIN BOSS | ⑭ REMOTE OIL FILTER RETURN CONNECTION |
| ⑤ GEAR OIL INLET TO COOLER TEMPERATURE PORT- N/A | ⑩ OIL GALLERY TEMPERATURE PORT | ⑮ REMOTE OIL FILTER SUPPLY CONNECTION |

LUBE OIL SYSTEM

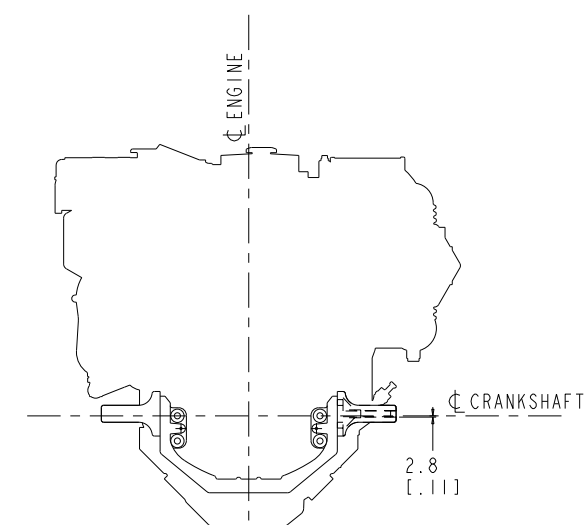
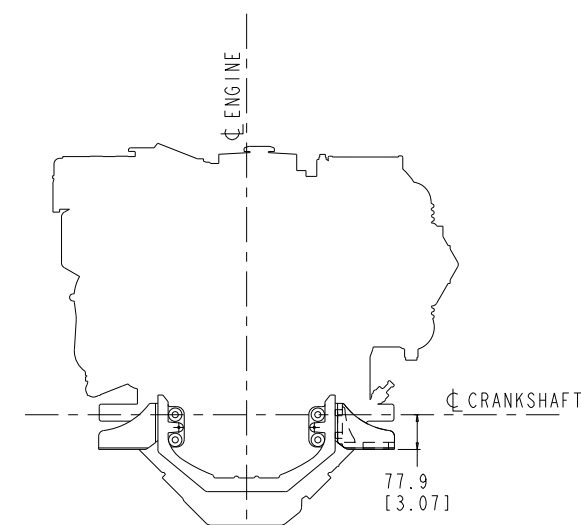
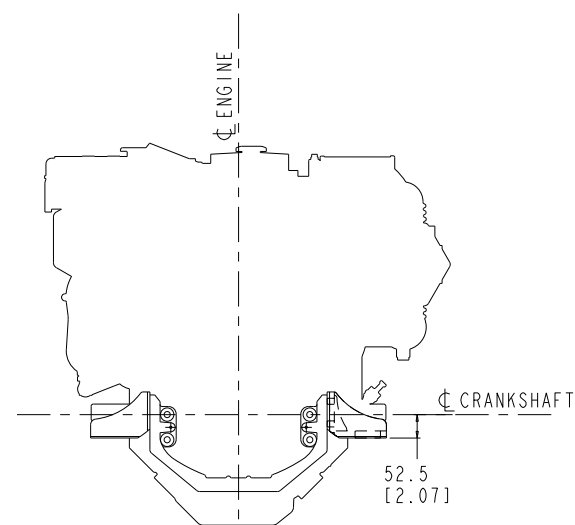
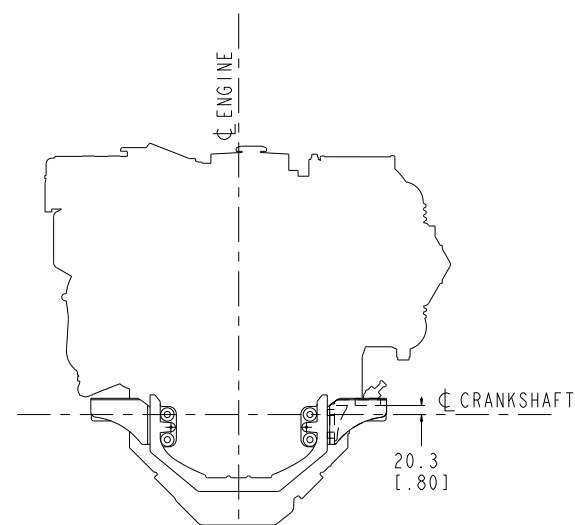
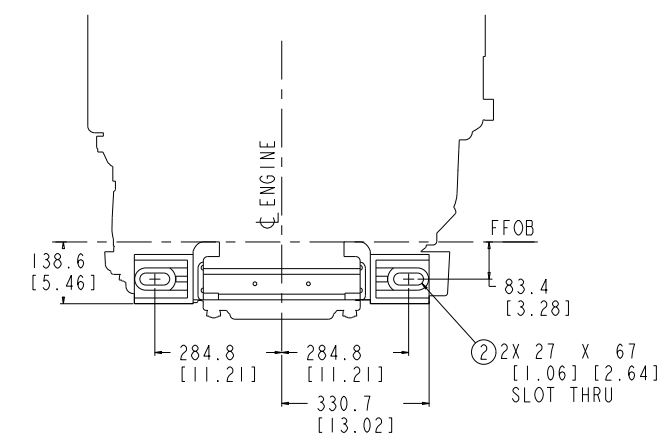
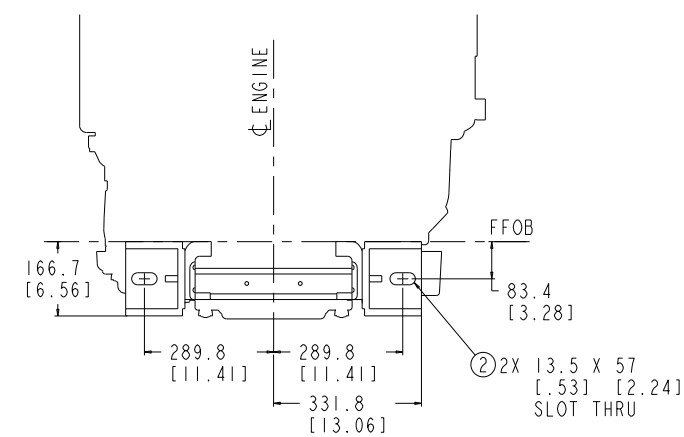
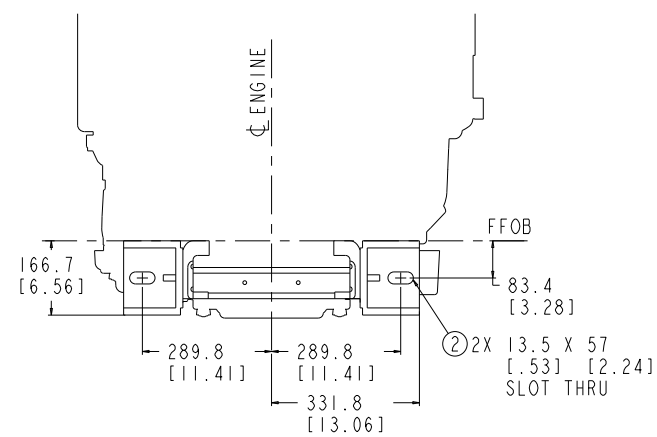
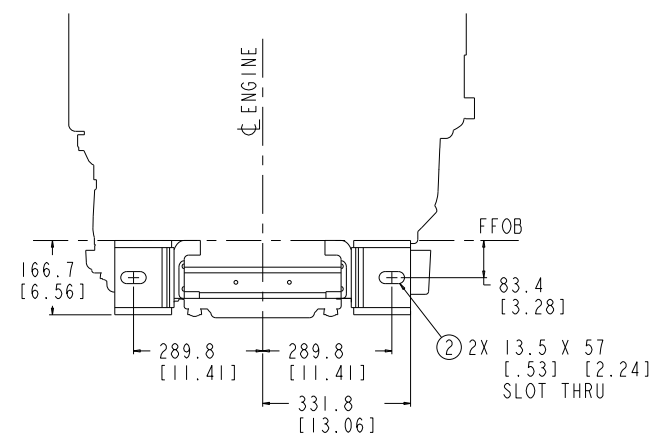
DO NOT SCALE THIS DRAWING
THIS DRAWING/DATA FILE (AND THE INFORMATION
SHOWN THEREON) IS CONFIDENTIAL AND PROPRIETARY
AND SHALL NOT BE USED, DISCLOSED TO OTHERS,
OR REPRODUCED BY ANY MEANS FOR ANY PURPOSE
IN HARD COPY FORM OR IN MACHINE READABLE FILES,
WITHOUT WRITTEN CONSENT OF CUMMINS INC.,
MARKETING CAD SERVICES DEPARTMENT.

LAST SECTION LETTER USED: A	REF. DRAWING STANDARDS: ANSI Y14.5M ISO 81101	CUMMINS INC.	
UNLESS OTHERWISE SPECIFIED DIMENSIONS ARE IN: MILLIMETERS 1 3 ARE IN: INCHES		ITEM NAME QSB6.7L-ME (355-550 HP)	IDENTIFIER
DWN CHD APPD	TWO/ANG UNCHECKED	SIZE CODE IDENT. NO. J	ITEM NUMBER 4954063
SCALE: 200		ITEM CONTROL: MCS	SHEET 17 OF 24



ITEM NUMBER	10
4954063	

REVISIONS				
ZONE	REV	DESCRIPTION	DWN	APP
	01	QSB6.7L-ME SUBSYSTEM	JPH 2-19-13	



PRODUCT GRAPHICS FILE
NO ORIGINAL DRAWING EXISTS FOR THIS
ITEM. THE ENGINEERING GRAPHICS DATA
FOR THIS ITEM RESIDES IN THE PRODUCT
GRAPHICS FILE AND IS CONTROLLED BY
THE AGENCY DESIGNATED AS HAVING
ITEM CONTROL.

CUMMINS INC.

QTY	ITEM NAME	UNIT	PRICE	AMOUNT
1	QSB6.7L-ME (355-550 HP)			

IDENTIFIER
INSTALLATION DIAGRAM

SIZE	CODE IDENT. NO.	ITEM NUMBER
J		4954063

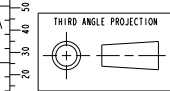
SCALE: 210	ITEM CONTROL: MCS	SHEET 19 OF 24
------------	-------------------	----------------

DO NOT SCALE THIS DRAWING

THIS DRAWING/DATA FILE (AND THE INFORMATION SHOWN THEREON) IS CONFIDENTIAL AND PROPRIETARY AND SHALL NOT BE USED, DISCLOSED TO OTHERS, OR REPRODUCED BY ANY MEANS FOR ANY PURPOSE IN HARD COPY FORM OR IN MACHINE READABLE FILES WITHOUT WRITTEN CONSENT OF CUMMINS INC., MARKETING CAD SERVICES DEPARTMENT.

MOUNTING SYSTEM

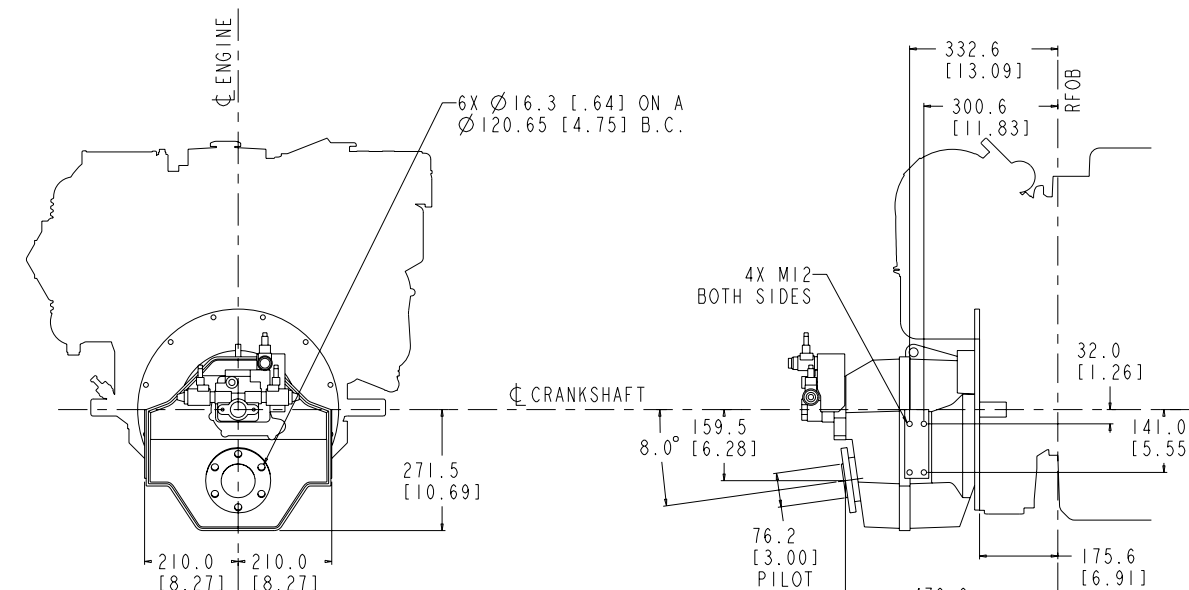
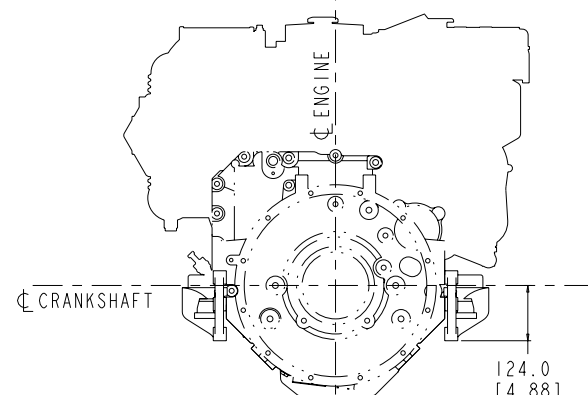
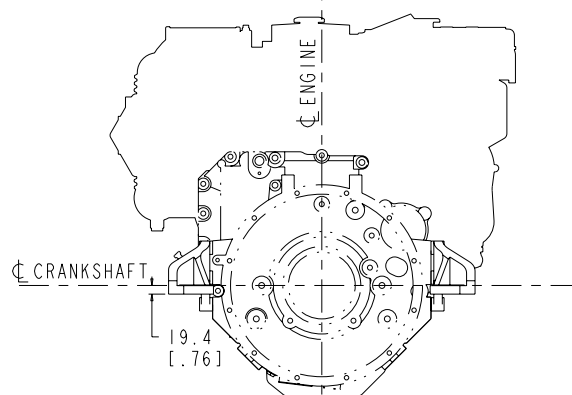
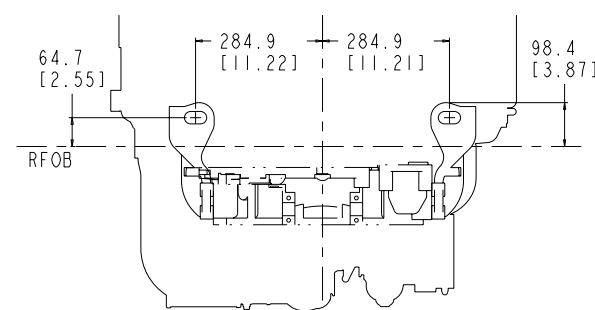
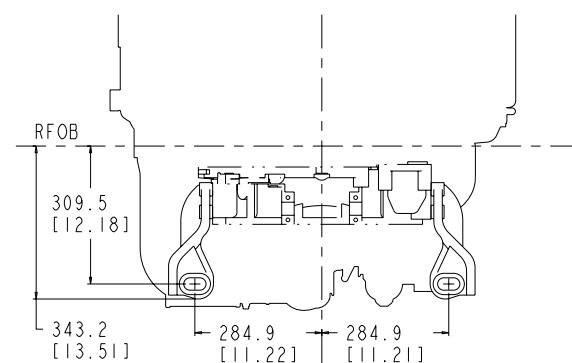
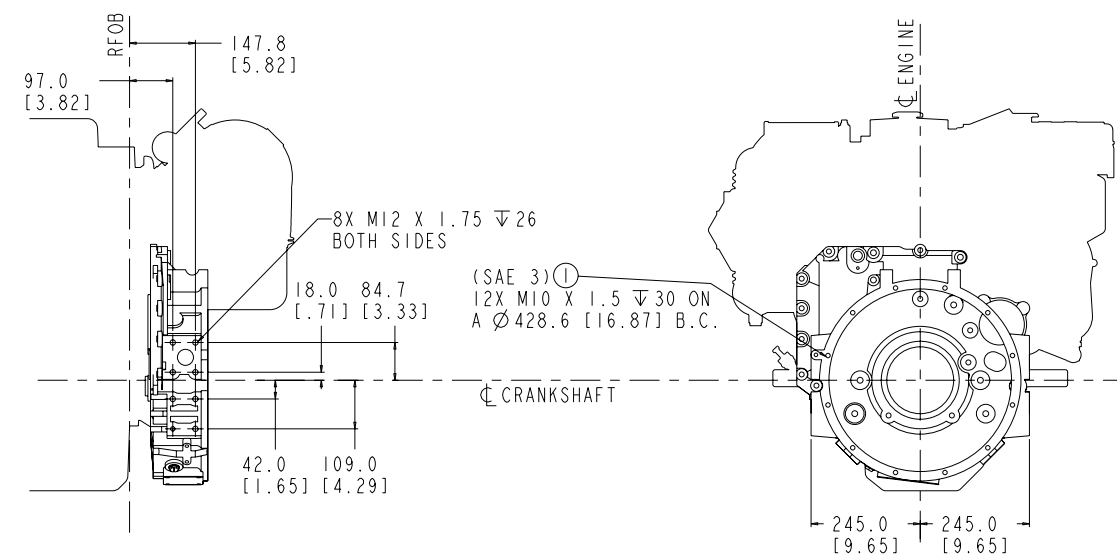
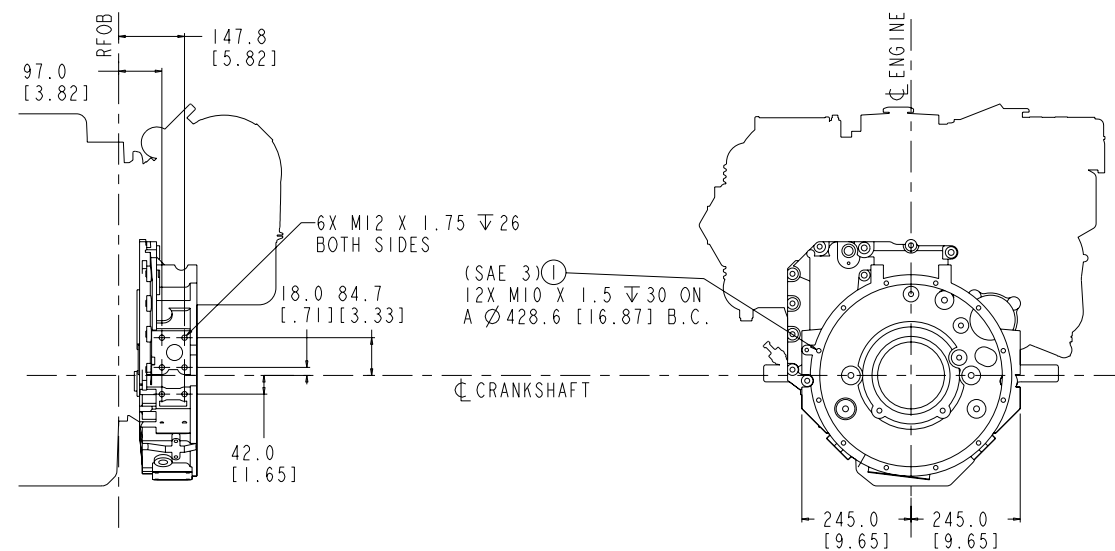
LAST SECTION LETTER USED: A	REF. DRAWING STANDARDS: ANSI Y14.5 M ISO R101	CUMMINS INC.	
		ITEM NAME QSB.6.7L-ME (355-550 HP)	
UNLESS OTHERWISE SPECIFIED DIMENSIONS ARE IN: MILLIMETERS 1 IN. ARE: INCHES		IDENTIFIER INSTALLATION DIAGRAM	
DWN	TWOLFGEN	SIZE CODE IDENT. NO.	ITEM NUMBER
CHD	UNCHECKED	J	4954063
APPD		SCALE	ITEM CONTROL: M.C.S. 1 SUFFIT 19 OF 24
APPD			



① FLYWHEEL HOUSING BOLT HOLES	④ REAR MOUNT BOLT HOLE
② FRONT MOUNT BOLT HOLE	⑤ SPEED SENSOR (ECM) PORT
③ JACKING SCREW BOLT HOLE	⑥ SPEED SENSOR (TACHOMETER) PORT

ITEM NUMBER
4954063

REVISIONS				
ZONE	REV	DESCRIPTION	DWN	APP
	01	QSB6.7L-ME SUBSYSTEM	JPH 2-19-13	



PRODUCT GRAPHICS FILE
NO ORIGINAL DRAWING EXISTS FOR THIS
ITEM. THE ENGINEERING GRAPHICS DATA
FOR THIS ITEM RESIDES IN THE PRODUCT
GRAPHICS FILE AND IS CONTROLLED BY
THE AGENCY DESIGNATED AS HAVING
ITEM CONTROL.

G	LAST SECTION LETTER USED:	REF. DRAWING STANDARD: ANSI Y14.5 ISO R101	CUMMINS INC.	
	A		ITEM NAME	
Y	OTHERWISE SPECIFIED DIMENSIONS ARE IN: MILLIMETERS 1 ARE IN: INCHES		QSB6.7L-ME (355-550 HP)	
			IDENTIFIER	
			INSTALLATION DIAGRAM	
D	TWOLF	4-40-12	SIZE CODE IDENT. NO.	ITEM NUMBER
CHD	UNCHECKED		J	4954063
APPD				
APPD				
		SCALE: 2X	ITEM CONTROL: M.C.S.	1. SUFFIT 20 OF 24

DO NOT SCALE THIS DRAWING

THIS DRAWING/DATA FILE (AND THE INFORMATION SHOWN THEREON) IS CONFIDENTIAL AND PROPRIETARY AND SHALL NOT BE USED, DISCLOSED TO OTHERS, OR REPRODUCED BY ANY MEANS FOR ANY PURPOSE IN HARD COPY FORM OR IN MACHINE READABLE FILES WITHOUT WRITTEN CONSENT OF CUMMINS INC., MARKETING CAD SERVICES DEPARTMENT.

MOUNTING SYSTEM

