

ITEM NUMBER  
4954074

REVISIONS		OWN	APP'D
ZONE REV	DESCRIPTION		
01	QSB6.7L-ME (230-305 HP)	JPH	

CORD LENGTH  
1829 [72.00]  
MALE 3 PRONG  
15AMP 120VOLT  
NEMA 5-15

RIGHT VIEW

CH9072

FRONT VIEW

BACK VIEW

HC9202

RIGHT VIEW

BACK VIEW

HC9203

RIGHT VIEW

BACK VIEW

HC9238

RIGHT VIEW

① COOLANT ACCESSORY RETURN CONNECTION	⑩ COOLANT INLET TEMPERATURE PORT	⑲ COOLANT RETURN PRES. PORT, GEAR OIL COOLER- N/A	⑳ COOLANT RETURN TEMP. PORT, GEAR OIL COOLER- N/A
② COOLANT ACCESSORY SUPPLY CONNECTION	⑪ COOLANT LEVEL SWITCH PORT		
③ COOLANT BLOCK HEATER PORT	⑫ COOLANT OUTLET CONNECTION		
④ COOLANT BLOCK PRESSURE PORT	⑬ COOLANT OUTLET PRESSURE PORT		
⑤ COOLANT DRAIN, AFTERCOOLER	⑭ COOLANT OUTLET TEMPERATURE PORT		
⑥ COOLANT DRAIN, CYLINDER BLOCK	⑮ COOLANT OUTLET CONNECTION, GEAR OIL COOLER- N/A		
⑦ COOLANT DRAIN, PUMP	⑯ COOLANT OUTLET PRES. PORT, GEAR OIL COOLER- N/A		
⑧ COOLANT INLET CONNECTION	⑰ COOLANT OUTLET TEMP. PORT, GEAR OIL COOLER- N/A		
⑨ COOLANT INLET PRESSURE PORT	⑱ COOLANT RETURN CONNECTION, GEAR OIL COOLER- N/A		

㉑ COOLANT RETURN PRES. PORT, GEAR OIL COOLER- N/A	㉒ LTA COOLANT RETURN TEMP. PORT INLET
㉓ SEA WATER INLET CONNECTION	㉔ SEA WATER OUTLET CONNECTION
㉕ SEA WATER OUTLET TEMPERATURE	㉖ SEA WATER PUMP INLET PRESSURE PORT
㉗ SEA WATER PUMP OUTLET PRESSURE PORT	㉘ ZINC ANODE

DO NOT SCALE THIS DRAWING

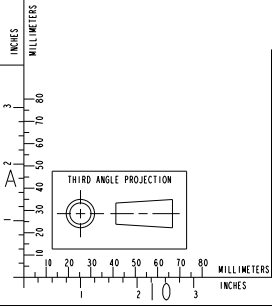
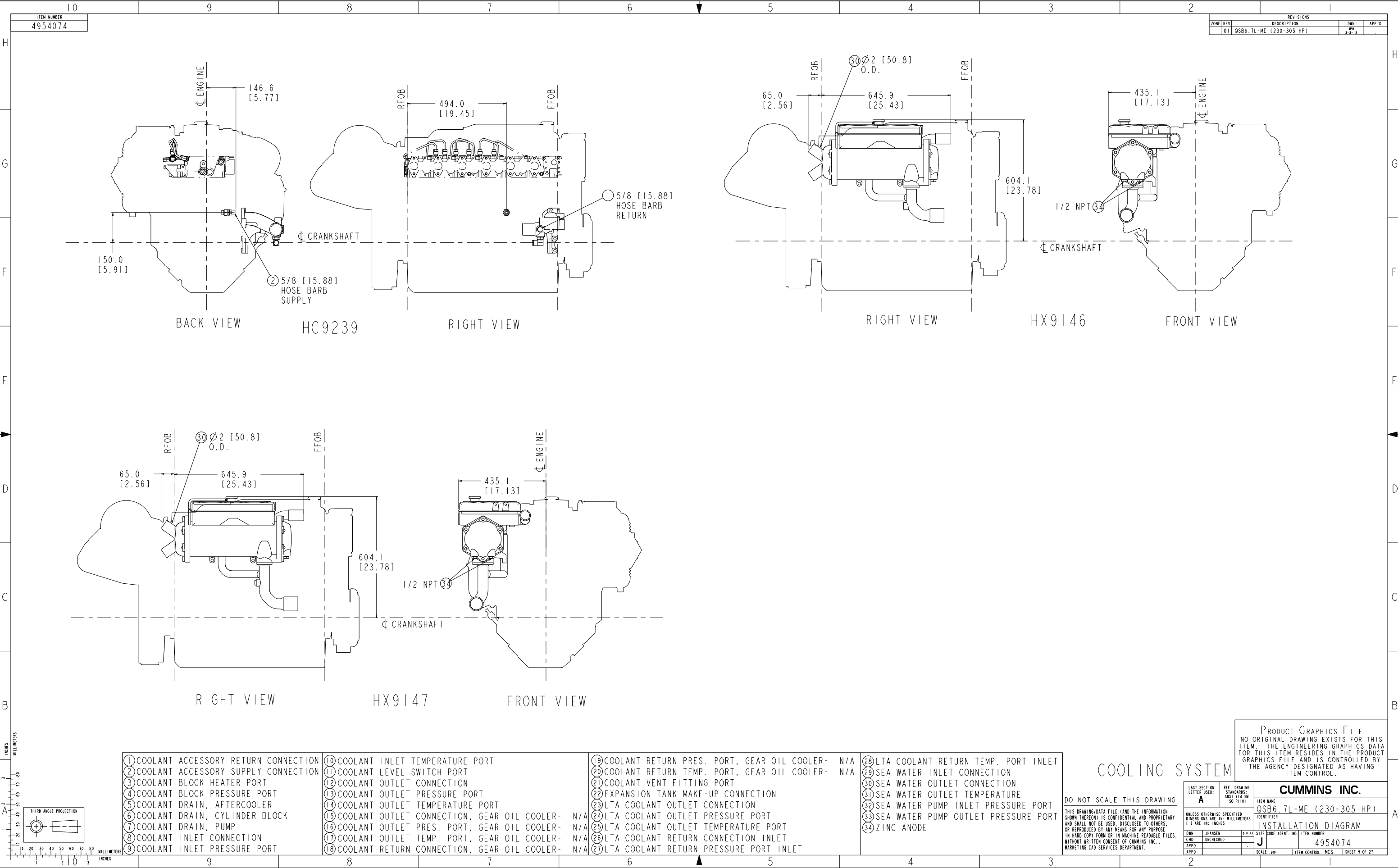
THIS DRAWING/DATA FILE (AND THE INFORMATION SHOWN THEREON) IS CONFIDENTIAL AND PROPRIETARY AND SHALL NOT BE USED, DISCLOSED TO OTHERS, OR REPRODUCED BY ANY MEANS FOR ANY PURPOSE IN HARD COPY FORM OR IN MACHINE READABLE FILES, WITHOUT WRITTEN CONSENT OF CUMMINS, INC., MARKETING CAD SERVICES DEPARTMENT.

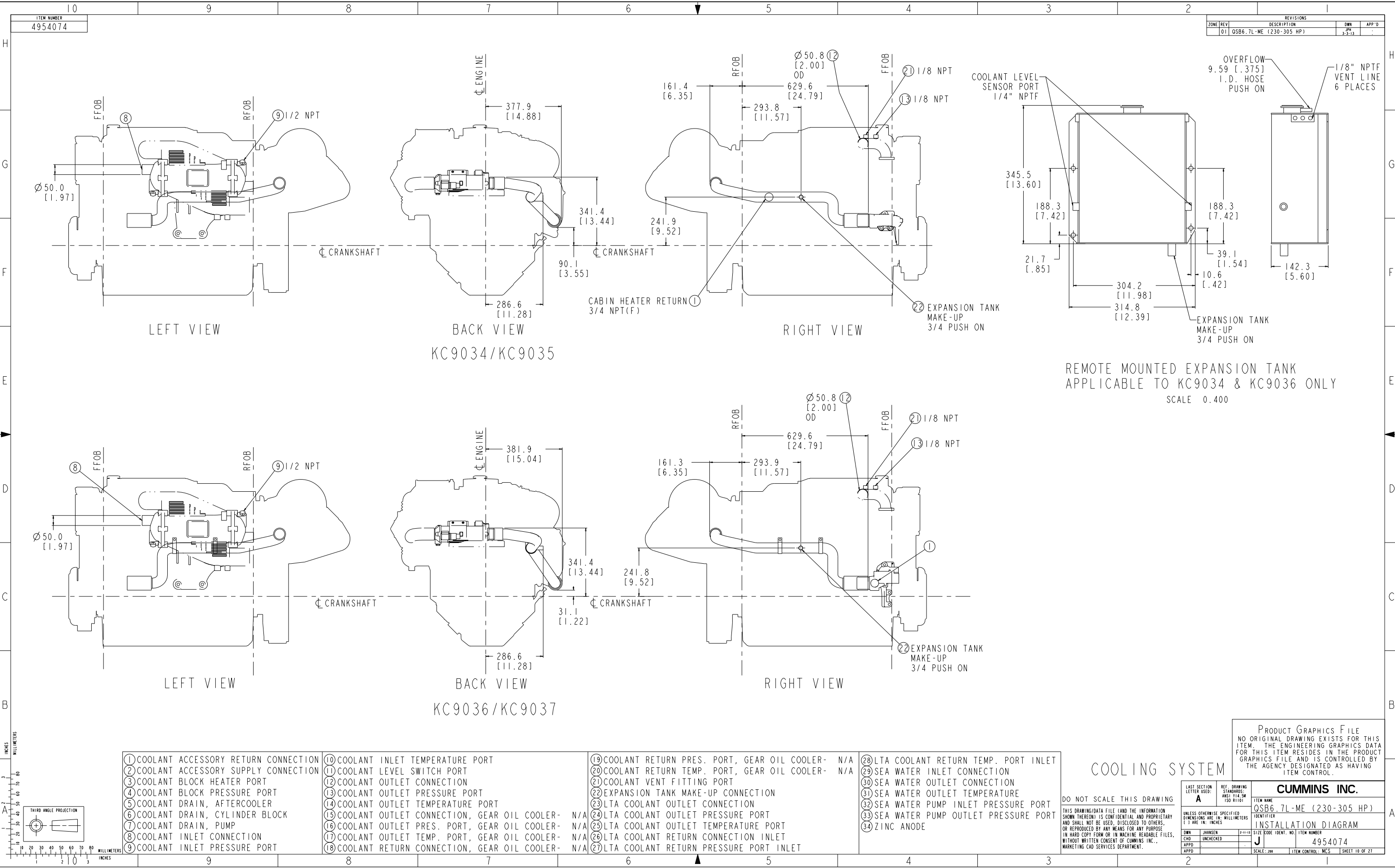
COOLING SYSTEM

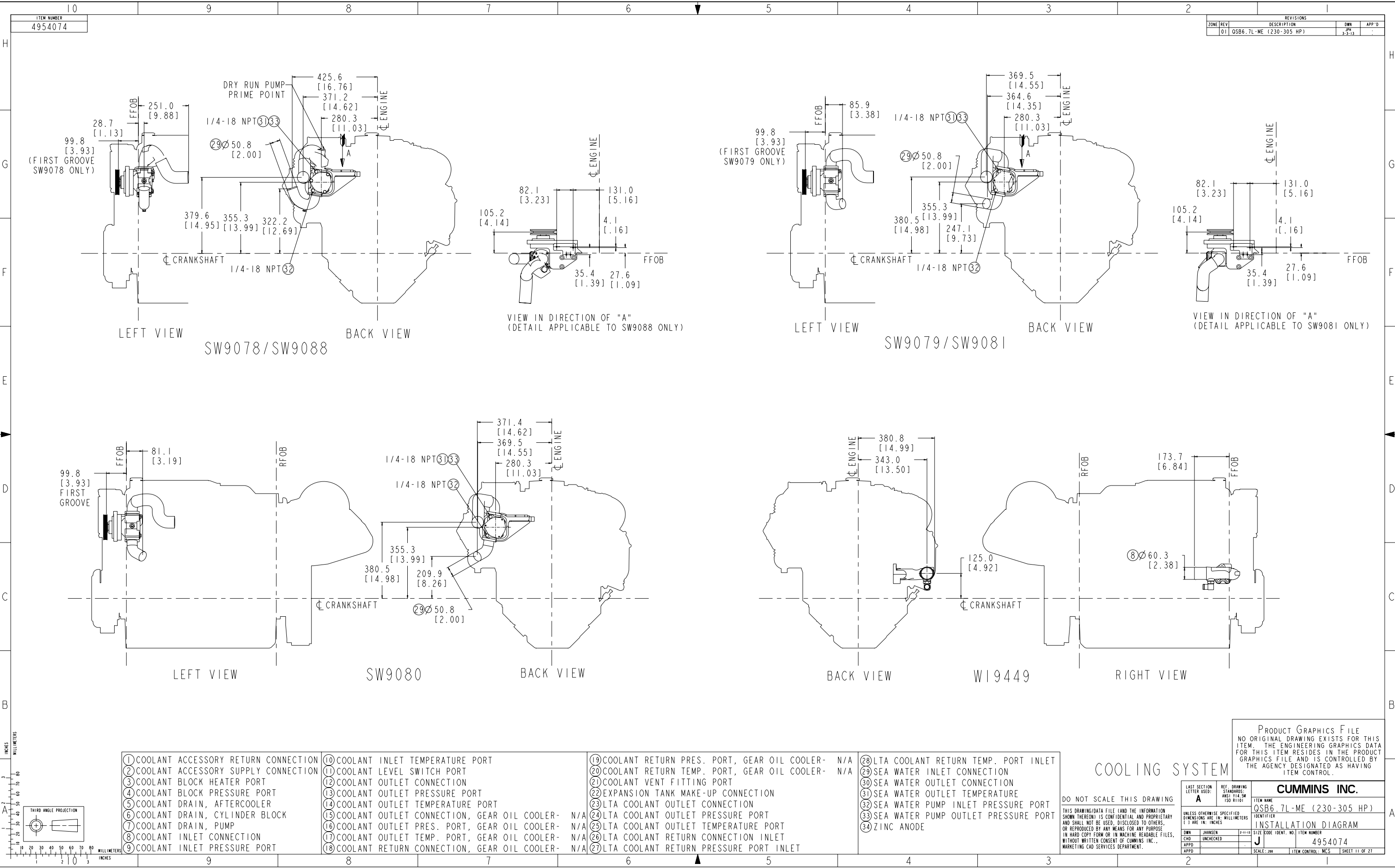
PRODUCT GRAPHICS FILE  
NO ORIGINAL DRAWING EXISTS FOR THIS ITEM. THE ENGINEERING GRAPHICS DATA FOR THIS ITEM RESIDES IN THE PRODUCT GRAPHICS FILE AND IS CONTROLLED BY THE AGENCY DESIGNATED AS HAVING ITEM CONTROL.

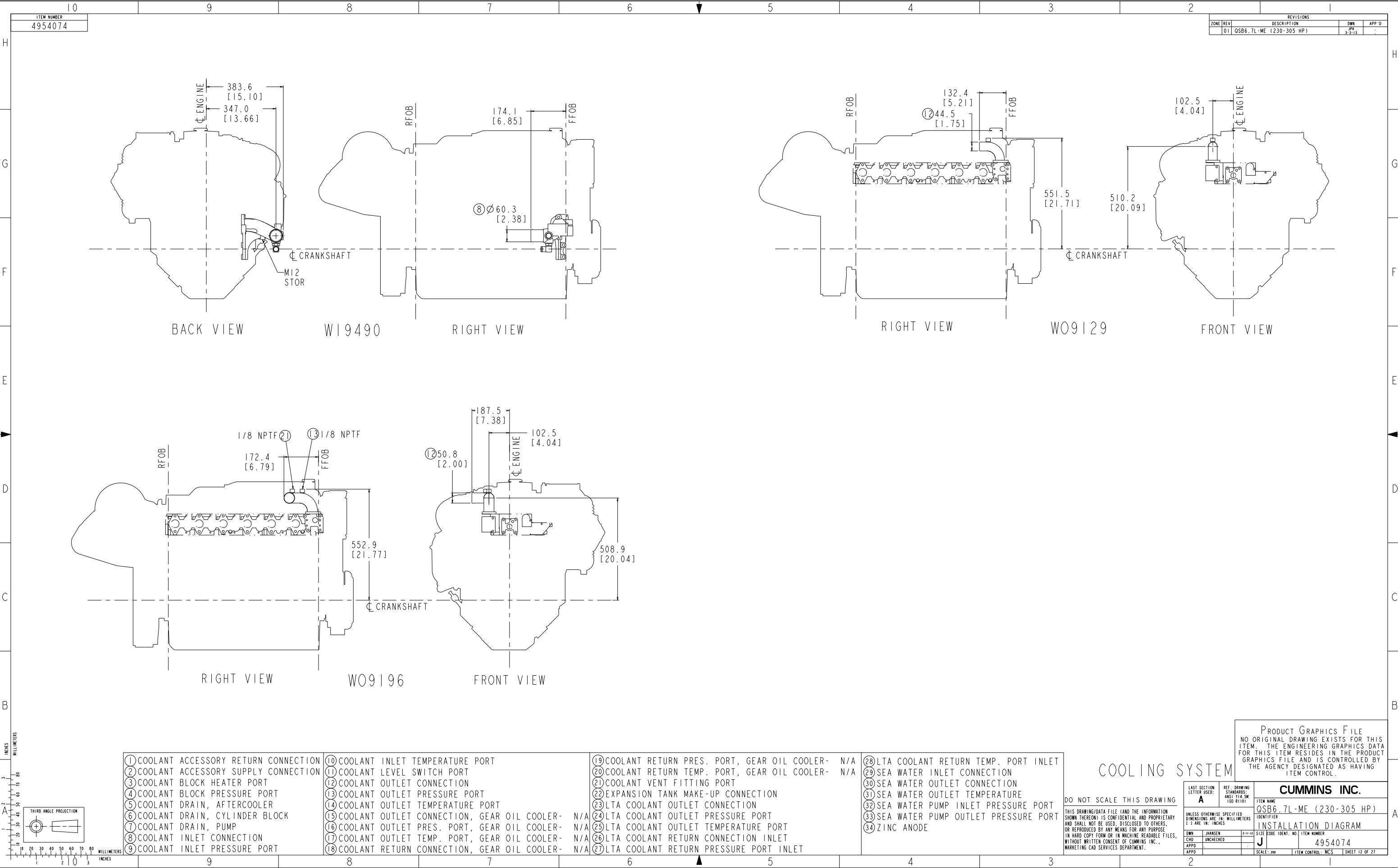
LAST SECTION LETTER USED: <b>A</b>	REF. DRAWING STANDARDS: ANSI Y14.5M ISO 81101	ITEM NAME <b>QSB6.7L-ME (230-305 HP)</b>
UNLESS OTHERWISE SPECIFIED DIMENSIONS ARE IN: MILLIMETERS 1 3 ARE IN: INCHES	IDENTIFIER <b>J</b>	SIZE CODE IDENT. NO. ITEM NUMBER <b>4954074</b>
DWN: JHANSEN CHD: UNCHECKED APPD: [blank]	SCALE: 200	ITEM CONTROL: MCS SHEET 8 OF 27

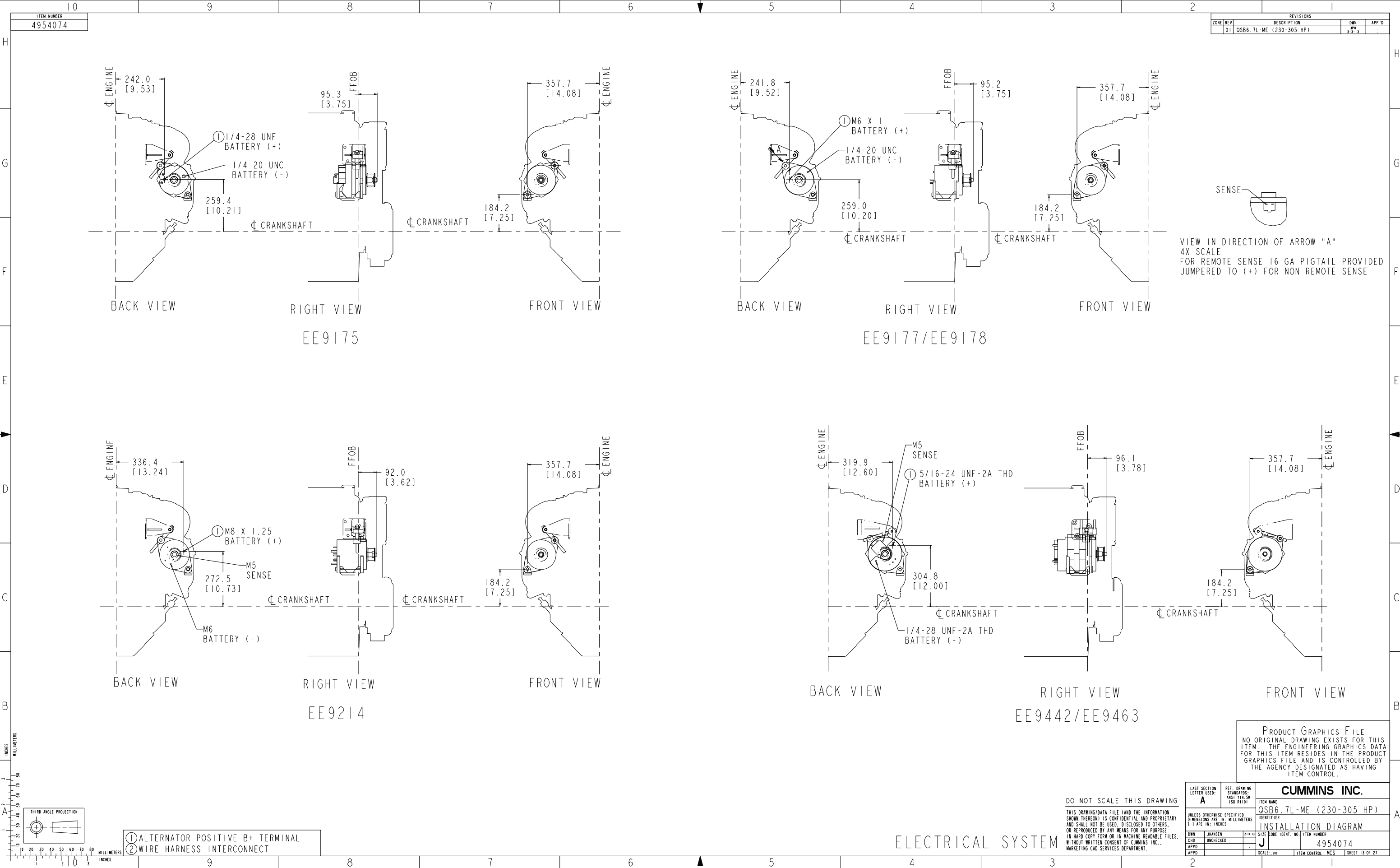












ITEM NUMBER  
4954074

REVISIONS			
ZONE	REV	DESCRIPTION	APP'D
01	OSB6.7L-ME (230-305 HP)		

VIEW IN DIRECTION OF ARROW "A"  
4X SCALE  
FOR REMOTE SENSE 16 GA PIGTAIL PROVIDED  
JUMPED TO (+) FOR NON REMOTE SENSE

PRODUCT GRAPHICS FILE  
NO ORIGINAL DRAWING EXISTS FOR THIS  
ITEM. THE ENGINEERING GRAPHICS DATA  
FOR THIS ITEM RESIDES IN THE PRODUCT  
GRAPHICS FILE AND IS CONTROLLED BY  
THE AGENCY DESIGNATED AS HAVING  
ITEM CONTROL.

LAST SECTION LETTER USED: <b>A</b>		REF. DRAWING STANDARDS: ANSI Y14.5M ISO 81101		ITEM NAME <b>CUMMINS INC.</b>	
UNLESS OTHERWISE SPECIFIED DIMENSIONS ARE IN: MILLIMETERS ( ) ARE IN: INCHES		IDENTIFIER <b>QSB6.7L-ME (230-305 HP)</b>		ITEM NUMBER <b>4954074</b>	
DWN	JHANSEN	2-11-13		SIZE CODE IDENT. NO.	
CHD	UNCHECKED			J	
APPD				SCALE: 200	
				ITEM CONTROL: MCS	
				SHEET 13 OF 27	

DO NOT SCALE THIS DRAWING  
THIS DRAWING/DATA FILE (AND THE INFORMATION  
SHOWN THEREON) IS CONFIDENTIAL AND PROPRIETARY  
AND SHALL NOT BE USED, DISCLOSED TO OTHERS,  
OR REPRODUCED BY ANY MEANS FOR ANY PURPOSE  
IN HARD COPY FORM OR IN MACHINE READABLE FILES,  
WITHOUT WRITTEN CONSENT OF CUMMINS INC.,  
MARKETING CAD SERVICES DEPARTMENT.

ELECTRICAL SYSTEM

- ① ALTERNATOR POSITIVE B+ TERMINAL
- ② WIRE HARNESS INTERCONNECT

