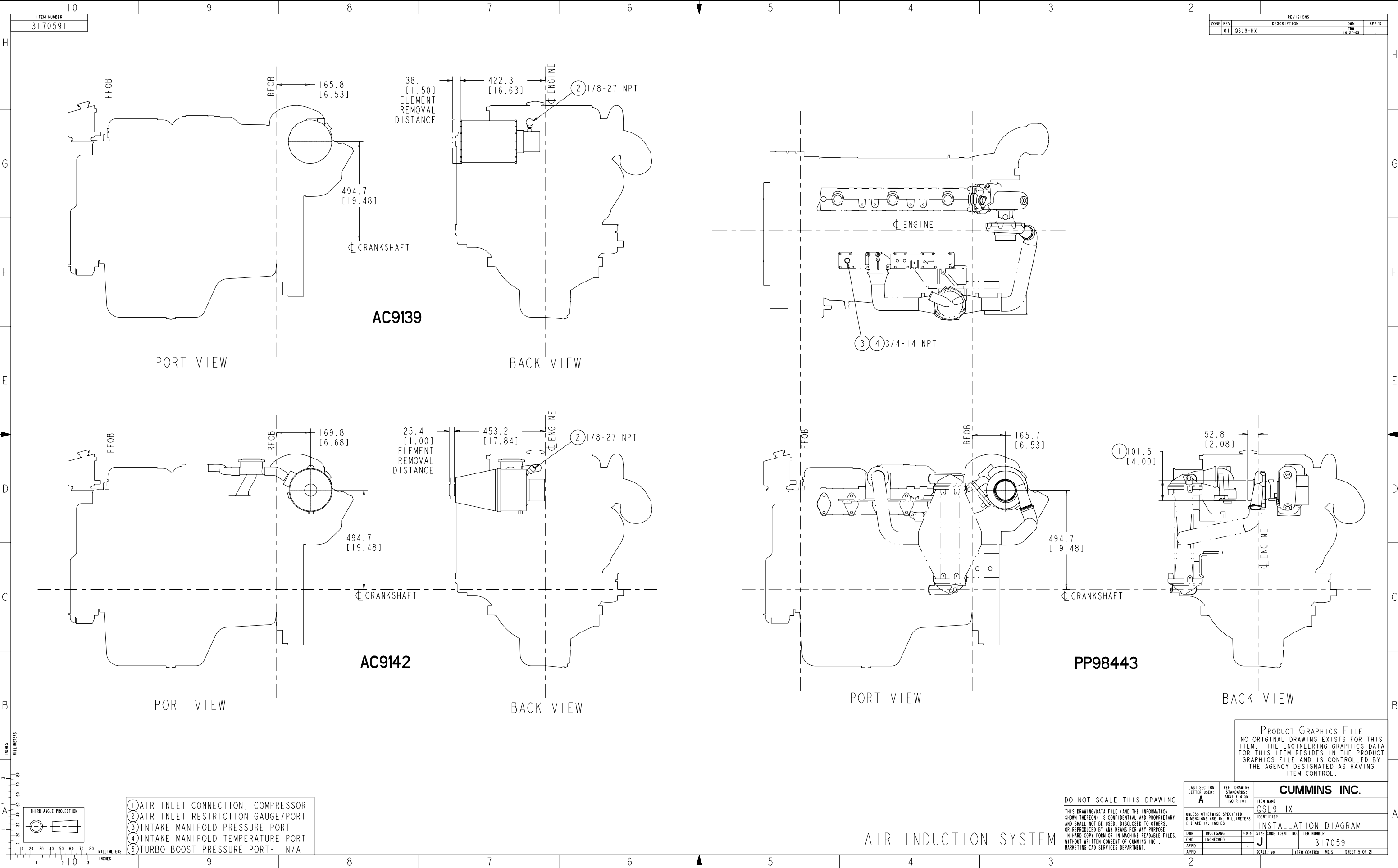
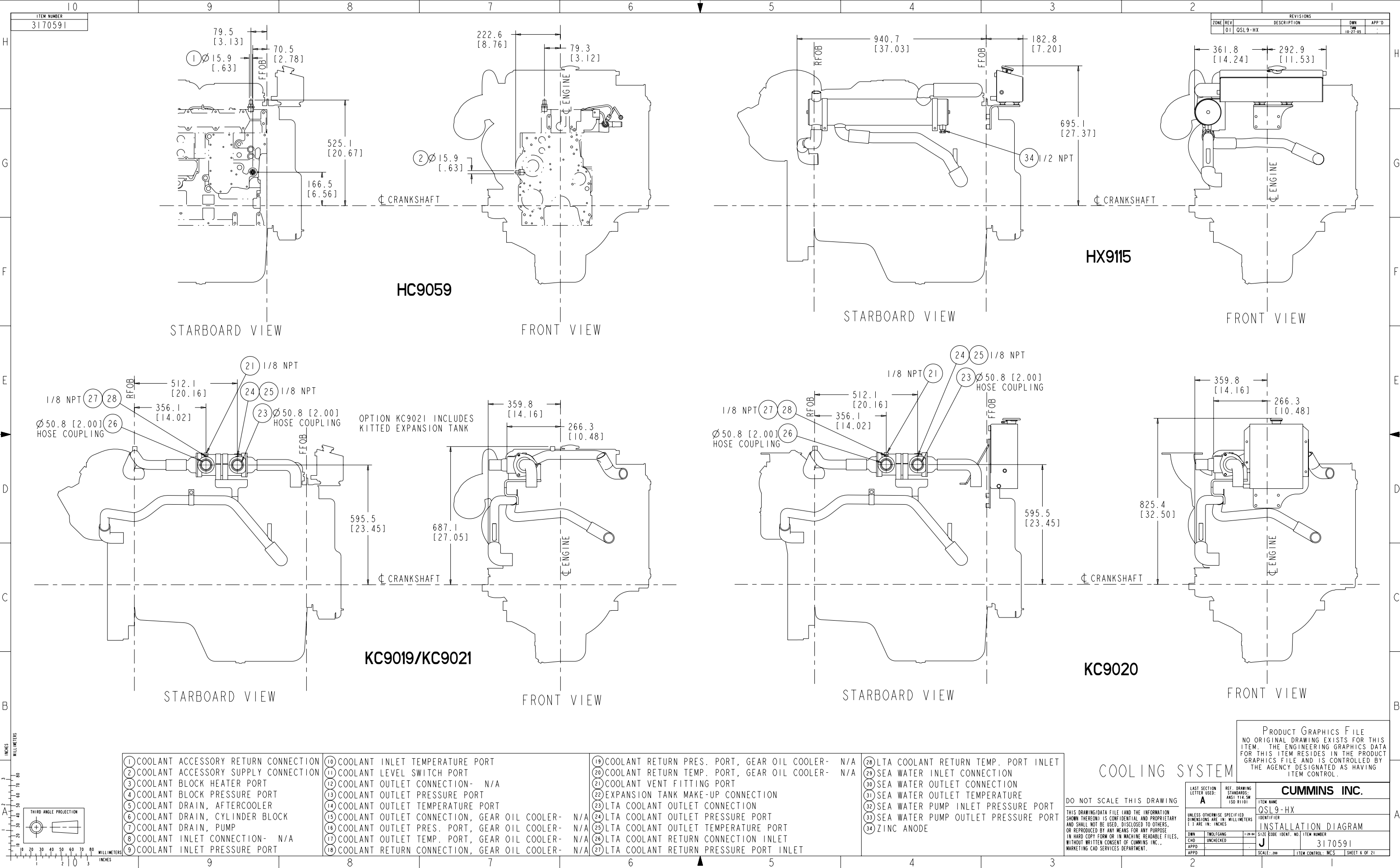


ACCESSORY DRIVES & PTO'S





REVISIONS		OWN	APP'D
ZONE	REV	DESCRIPTION	DATE
01	OSL 9-HX		10/27/93

LAST SECTION LETTER USED: A		REF. DRAWING STANDARDS: ANSI Y14.5M ISO 81101	CUMMINS INC.	
UNLESS OTHERWISE SPECIFIED DIMENSIONS ARE IN: MILLIMETERS () ARE IN: INCHES			ITEM NAME QSL9-HX	SHEET 6 OF 21
			IDENTIFIER INSTALLATION DIAGRAM	
DWN	TWO/FANG	1/24/94	SIZE CODE IDENT. NO.	ITEM NUMBER
CHD	UNCHECKED		J	3170591
APPD			SCALE: 200	ITEM CONTROL: MCS
APPD				

PRODUCT GRAPHICS FILE
NO ORIGINAL DRAWING EXISTS FOR THIS ITEM. THE ENGINEERING GRAPHICS DATA FOR THIS ITEM RESIDES IN THE PRODUCT GRAPHICS FILE AND IS CONTROLLED BY THE AGENCY DESIGNATED AS HAVING ITEM CONTROL.

CUMMINS INC.

DO NOT SCALE THIS DRAWING
THIS DRAWING/DATA FILE (AND THE INFORMATION SHOWN THEREON) IS CONFIDENTIAL AND PROPRIETARY AND SHALL NOT BE USED, DISCLOSED TO OTHERS, OR REPRODUCED BY ANY MEANS FOR ANY PURPOSE IN HARD COPY FORM OR IN MACHINE READABLE FILES, WITHOUT WRITTEN CONSENT OF CUMMINS INC., MARKETING CAD SERVICES DEPARTMENT.

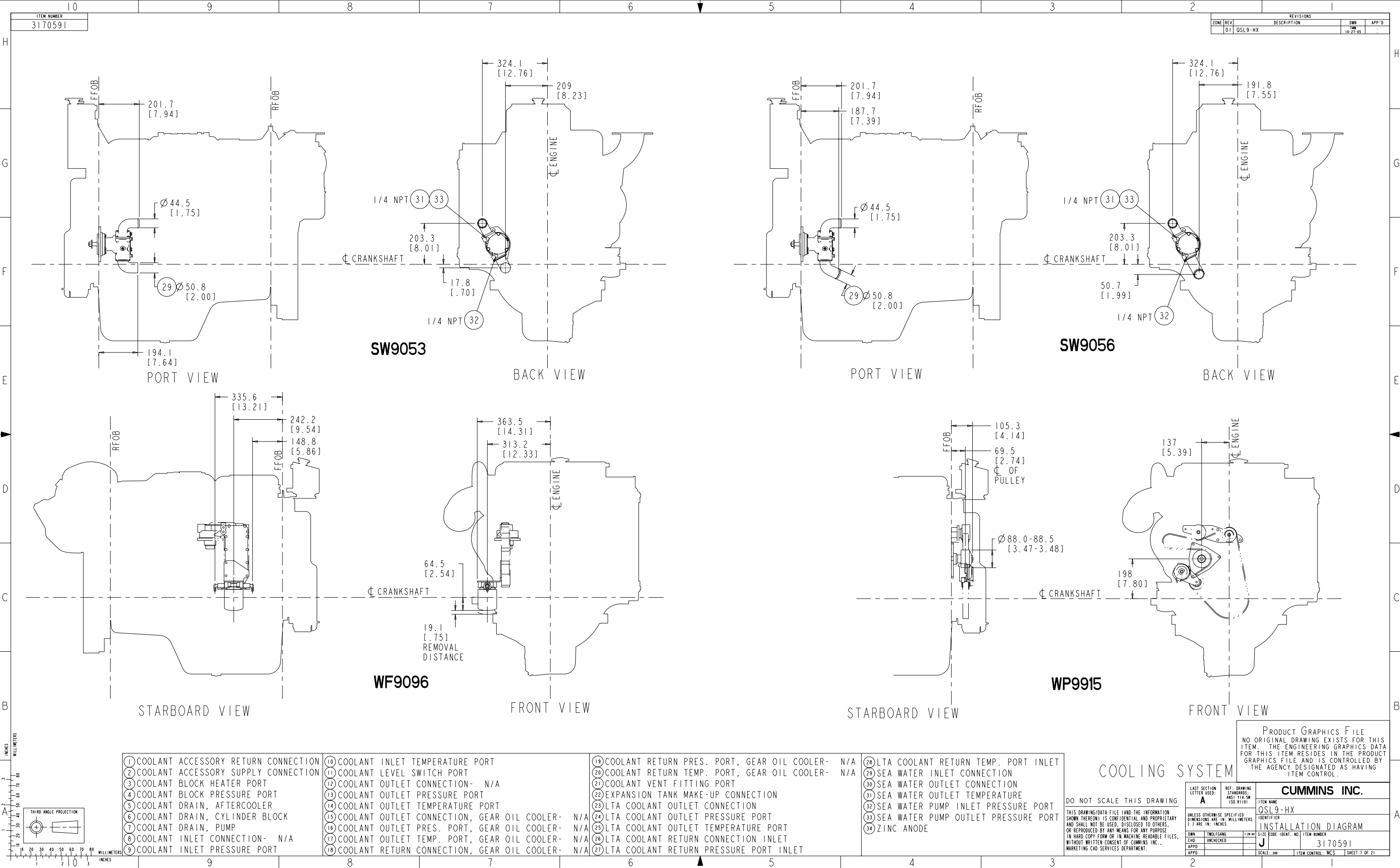
COOLING SYSTEM

- 28) LTA COOLANT RETURN TEMP. PORT INLET
- 29) SEA WATER INLET CONNECTION
- 30) SEA WATER OUTLET CONNECTION
- 31) SEA WATER OUTLET TEMPERATURE
- 32) SEA WATER PUMP INLET PRESSURE PORT
- 33) SEA WATER PUMP OUTLET PRESSURE PORT
- 34) ZINC ANODE

- 19) COOLANT RETURN PRES. PORT, GEAR OIL COOLER- N/A
- 20) COOLANT RETURN TEMP. PORT, GEAR OIL COOLER- N/A
- 21) COOLANT VENT FITTING PORT
- 22) EXPANSION TANK MAKE-UP CONNECTION
- 23) LTA COOLANT OUTLET CONNECTION
- 24) LTA COOLANT OUTLET PRESSURE PORT
- 25) LTA COOLANT OUTLET TEMPERATURE PORT
- 26) LTA COOLANT RETURN CONNECTION INLET
- 27) LTA COOLANT RETURN PRESSURE PORT INLET

- 10) COOLANT INLET TEMPERATURE PORT
- 11) COOLANT LEVEL SWITCH PORT
- 12) COOLANT OUTLET CONNECTION- N/A
- 13) COOLANT OUTLET PRESSURE PORT
- 14) COOLANT OUTLET TEMPERATURE PORT
- 15) COOLANT OUTLET CONNECTION, GEAR OIL COOLER- N/A
- 16) COOLANT OUTLET PRES. PORT, GEAR OIL COOLER- N/A
- 17) COOLANT OUTLET TEMP. PORT, GEAR OIL COOLER- N/A
- 18) COOLANT RETURN CONNECTION, GEAR OIL COOLER- N/A

- 1) COOLANT ACCESSORY RETURN CONNECTION
- 2) COOLANT ACCESSORY SUPPLY CONNECTION
- 3) COOLANT BLOCK HEATER PORT
- 4) COOLANT BLOCK PRESSURE PORT
- 5) COOLANT DRAIN, AFTERCOOLER
- 6) COOLANT DRAIN, CYLINDER BLOCK
- 7) COOLANT DRAIN, PUMP
- 8) COOLANT INLET CONNECTION- N/A
- 9) COOLANT INLET PRESSURE PORT



REVISEMENTS		OWN	APP'D
ZONE	REV	DESCRIPTION	
01	OSL 9-HX		

SW9053

SW9056

WF9096

WP9915

- 1 COOLANT ACCESSORY RETURN CONNECTION
- 2 COOLANT ACCESSORY SUPPLY CONNECTION
- 3 COOLANT BLOCK HEATER PORT
- 4 COOLANT BLOCK PRESSURE PORT
- 5 COOLANT DRAIN, AFTERCOOLER
- 6 COOLANT DRAIN, CYLINDER BLOCK
- 7 COOLANT DRAIN, PUMP
- 8 COOLANT INLET CONNECTION- N/A
- 9 COOLANT INLET PRESSURE PORT

- 10 COOLANT INLET TEMPERATURE PORT
- 11 COOLANT LEVEL SWITCH PORT
- 12 COOLANT OUTLET CONNECTION- N/A
- 13 COOLANT OUTLET PRESSURE PORT
- 14 COOLANT OUTLET TEMPERATURE PORT
- 15 COOLANT OUTLET CONNECTION, GEAR OIL COOLER- N/A
- 16 COOLANT OUTLET PRES. PORT, GEAR OIL COOLER- N/A
- 17 COOLANT OUTLET TEMP. PORT, GEAR OIL COOLER- N/A
- 18 COOLANT RETURN CONNECTION, GEAR OIL COOLER- N/A

- 19 COOLANT RETURN PRES. PORT, GEAR OIL COOLER- N/A
- 20 COOLANT RETURN TEMP. PORT, GEAR OIL COOLER- N/A
- 21 COOLANT VENT FITTING PORT
- 22 EXPANSION TANK MAKE-UP CONNECTION
- 23 LTA COOLANT OUTLET CONNECTION
- 24 LTA COOLANT OUTLET PRESSURE PORT
- 25 LTA COOLANT OUTLET TEMPERATURE PORT
- 26 LTA COOLANT RETURN CONNECTION INLET
- 27 LTA COOLANT RETURN PRESSURE PORT INLET

- 28 LTA COOLANT RETURN TEMP. PORT INLET
- 29 SEA WATER INLET CONNECTION
- 30 SEA WATER OUTLET CONNECTION
- 31 SEA WATER OUTLET TEMPERATURE
- 32 SEA WATER PUMP INLET PRESSURE PORT
- 33 SEA WATER PUMP OUTLET PRESSURE PORT
- 34 ZINC ANODE

COOLING SYSTEM

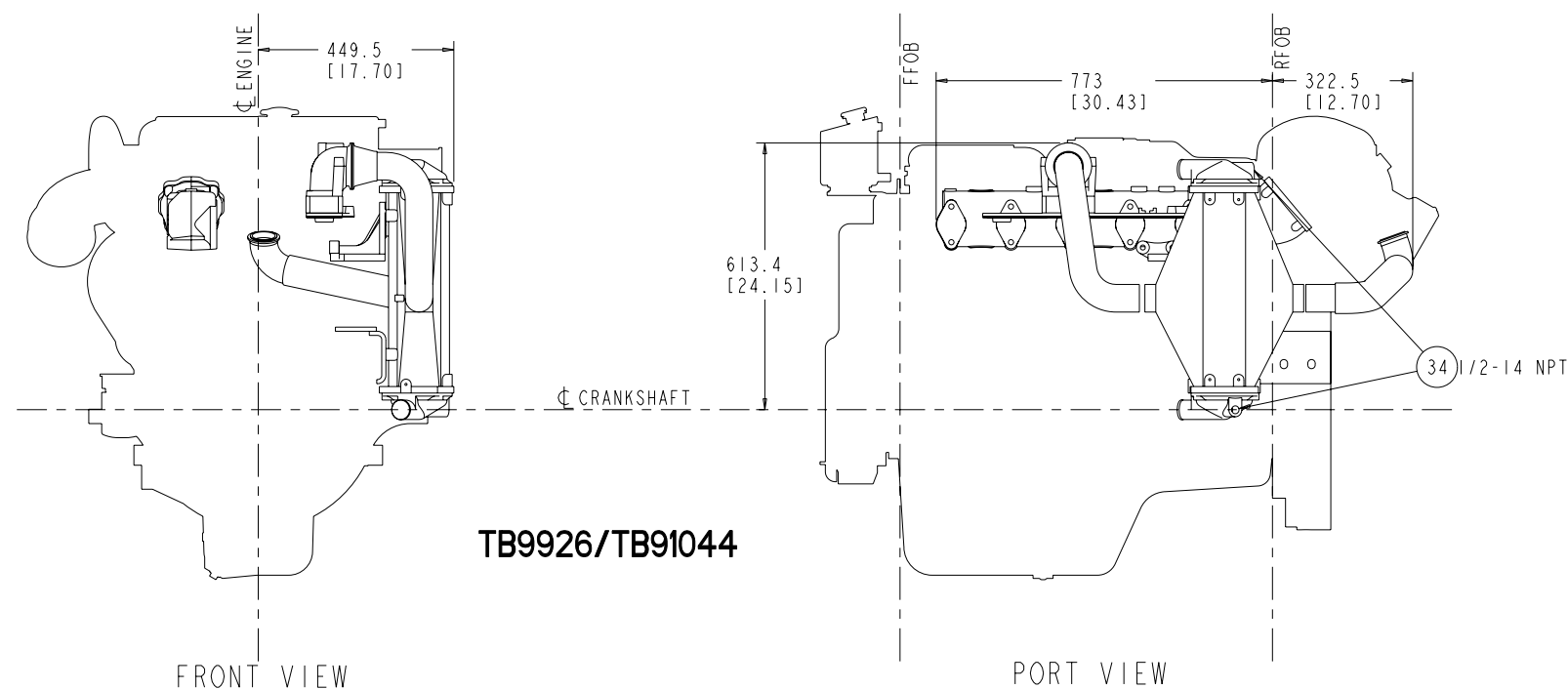
PRODUCT GRAPHICS FILE
NO ORIGINAL DRAWING EXISTS FOR THIS ITEM. THE ENGINEERING GRAPHICS DATA FOR THIS ITEM RESIDES IN THE PRODUCT GRAPHICS FILE AND IS CONTROLLED BY THE AGENCY DESIGNATED AS HAVING ITEM CONTROL.

LAST SECTION LETTER USED: A		REF. DRAWING STANDARDS: ANSI Y14.5M ISO 81101	ITEM NAME CUMMINS INC.	
UNLESS OTHERWISE SPECIFIED DIMENSIONS ARE IN: MILLIMETERS () ARE IN: INCHES		IDENTIFIER OSL 9-HX	ITEM NUMBER 3170591	
DWN: TWO/ENG: UNCHECKED		SIZE CODE IDENT. NO.: J	SHEET 7 OF 21	
APPD: UNCHECKED		SCALE: 200	ITEM CONTROL: MCS	

DO NOT SCALE THIS DRAWING
THIS DRAWING/DATA FILE (AND THE INFORMATION SHOWN THEREON) IS CONFIDENTIAL AND PROPRIETARY AND SHALL NOT BE USED, DISCLOSED TO OTHERS, OR REPRODUCED BY ANY MEANS FOR ANY PURPOSE IN HARD COPY FORM OR IN MACHINE READABLE FILES, WITHOUT WRITTEN CONSENT OF CUMMINS INC., MARKETING CAD SERVICES DEPARTMENT.

ITEM NUMBER	10
3170591	

REVISIONS				
ZONE	REV	DESCRIPTION	DWN	APP
	01	QSL 9-HX	TW 10-27-05	



1	COOLANT ACCESSORY RETURN CONNECTION	10	COOLANT INLET TEMPERATURE PORT	19	COOLANT RETURN PRES. PORT, GEAR OIL COOLER-	N/A	28	LTA COOLANT RETURN TEMP. PORT INLET
2	COOLANT ACCESSORY SUPPLY CONNECTION	11	COOLANT LEVEL SWITCH PORT	20	COOLANT RETURN TEMP. PORT, GEAR OIL COOLER-	N/A	29	SEA WATER INLET CONNECTION
3	COOLANT BLOCK HEATER PORT	12	COOLANT OUTLET CONNECTION- N/A	21	COOLANT VENT FITTING PORT		30	SEA WATER OUTLET CONNECTION
4	COOLANT BLOCK PRESSURE PORT	13	COOLANT OUTLET PRESSURE PORT	22	EXPANSION TANK MAKE-UP CONNECTION		31	SEA WATER OUTLET TEMPERATURE
5	COOLANT DRAIN, AFTERCOOLER	14	COOLANT OUTLET TEMPERATURE PORT	23	LTA COOLANT OUTLET CONNECTION		32	SEA WATER PUMP INLET PRESSURE PORT
6	COOLANT DRAIN, CYLINDER BLOCK	15	COOLANT OUTLET CONNECTION, GEAR OIL COOLER-	24	LTA COOLANT OUTLET PRESSURE PORT	N/A	33	SEA WATER PUMP OUTLET PRESSURE PORT
7	COOLANT DRAIN, PUMP	16	COOLANT OUTLET PRES. PORT, GEAR OIL COOLER-	25	LTA COOLANT OUTLET TEMPERATURE PORT	N/A	34	ZINC ANODE
8	COOLANT INLET CONNECTION- N/A	17	COOLANT OUTLET TEMP. PORT, GEAR OIL COOLER-	26	LTA COOLANT RETURN CONNECTION INLET	N/A		
9	COOLANT INLET PRESSURE PORT	18	COOLANT RETURN CONNECTION, GEAR OIL COOLER-	27	LTA COOLANT RETURN PRESSURE PORT INLET	N/A		

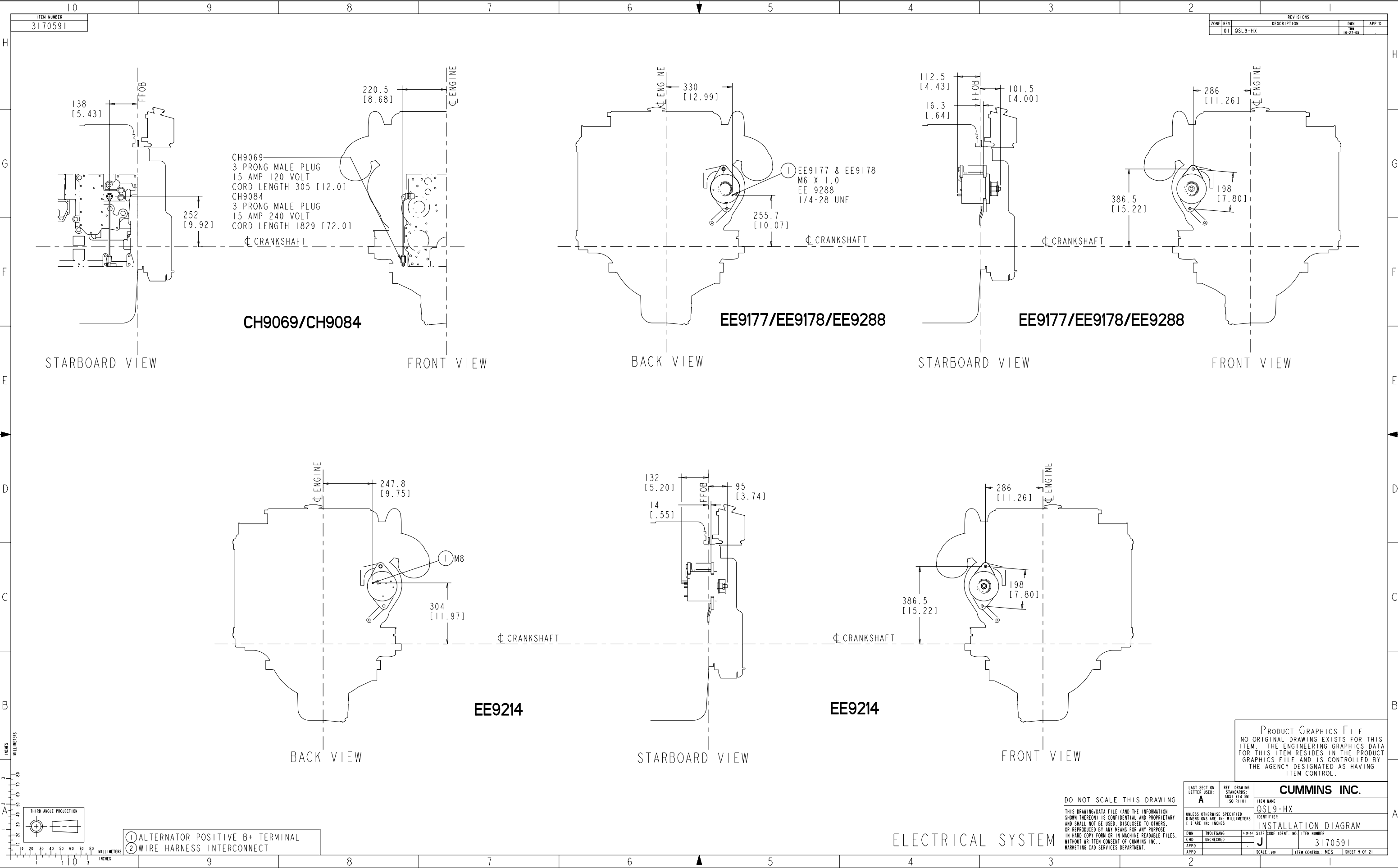
COOLING SYSTEM

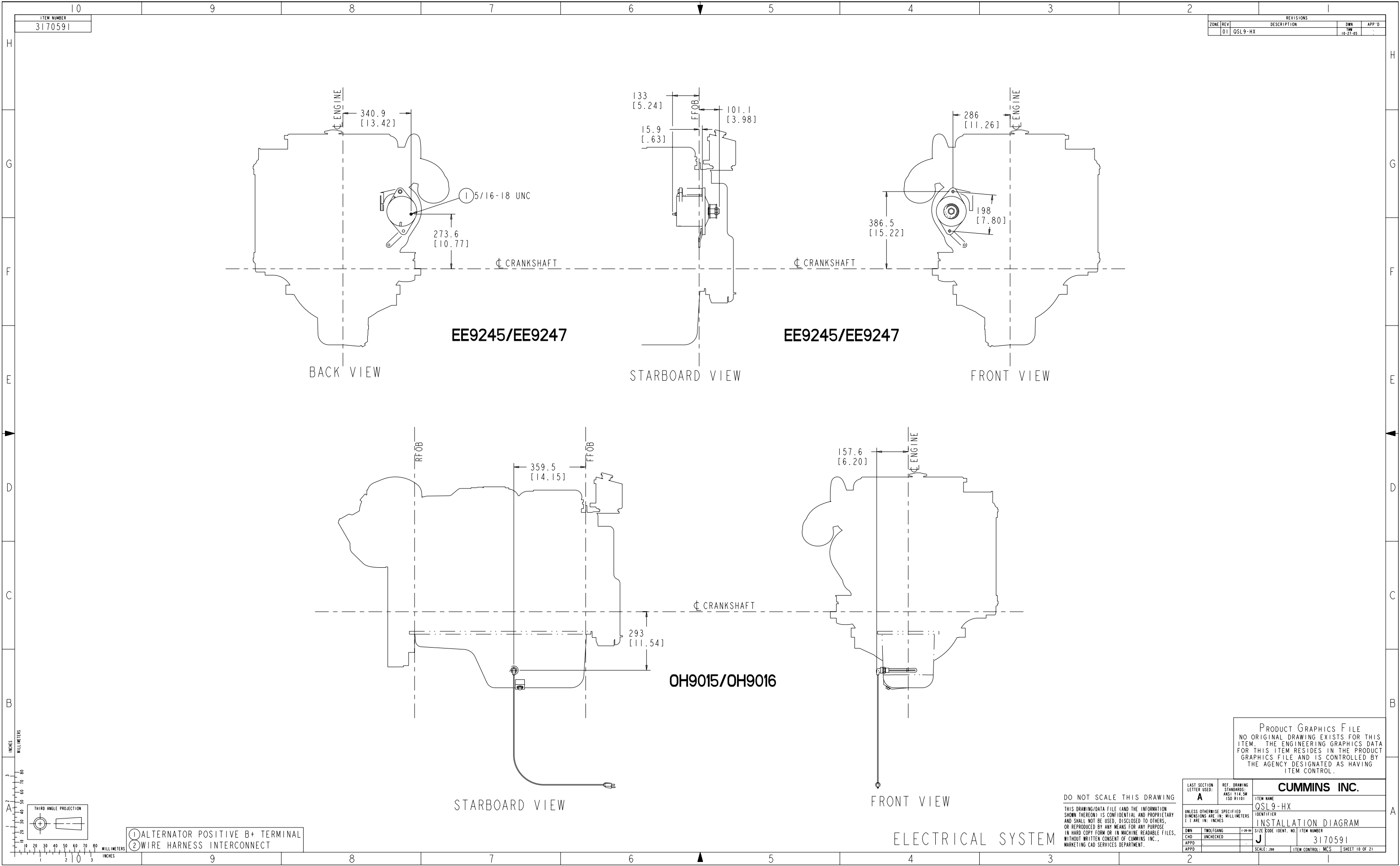
PRODUCT GRAPHICS FILE
NO ORIGINAL DRAWING EXISTS FOR THIS
ITEM. THE ENGINEERING GRAPHICS DATA
FOR THIS ITEM RESIDES IN THE PRODUCT
GRAPHICS FILE AND IS CONTROLLED BY
THE AGENCY DESIGNATED AS HAVING
ITEM CONTROL.

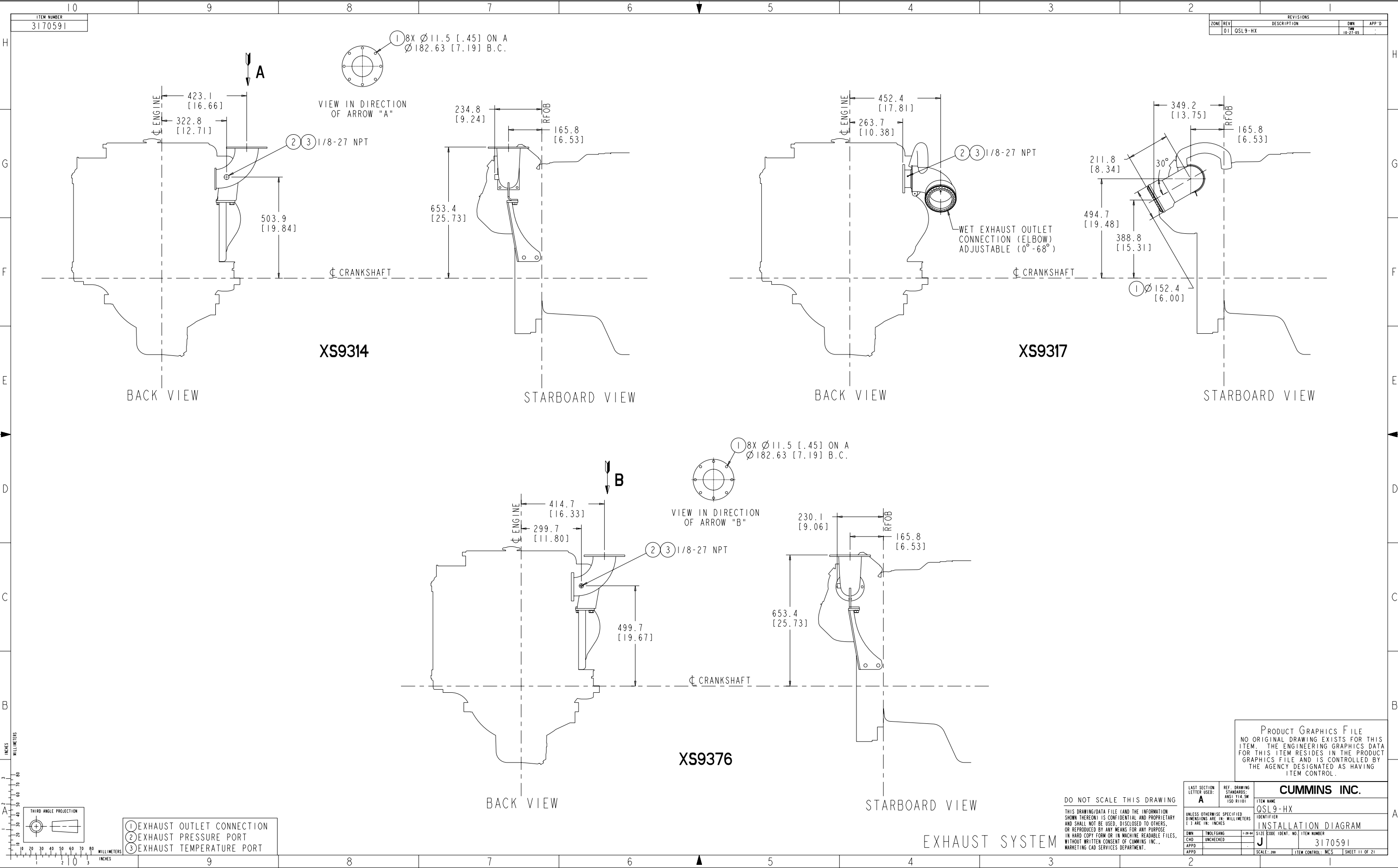
LAST SPECIFIC LETTER USED: A		REF. DRAWING STANDARDS: ANSI Y14.5M ISO 81101	CUMMINS INC.	
UNLESS OTHERWISE SPECIFIED DIMENSIONS ARE IN: MILLIMETERS 1" = 25.4 MM		ITEM NAME: OSL9-HX	IDENTIFIER	
1" = 25.4 MM		INSTALLATION DIAGRAM		
DWN	TWO GANG	1-20-84	SIZE CODE IDENT. NO.	ITEM NUMBER
CAD	UNCHECKED		J	3170591
APPD				
APPD			SCALE: 200	ITEM CONTROL: MCS SHEET 8 OF 21

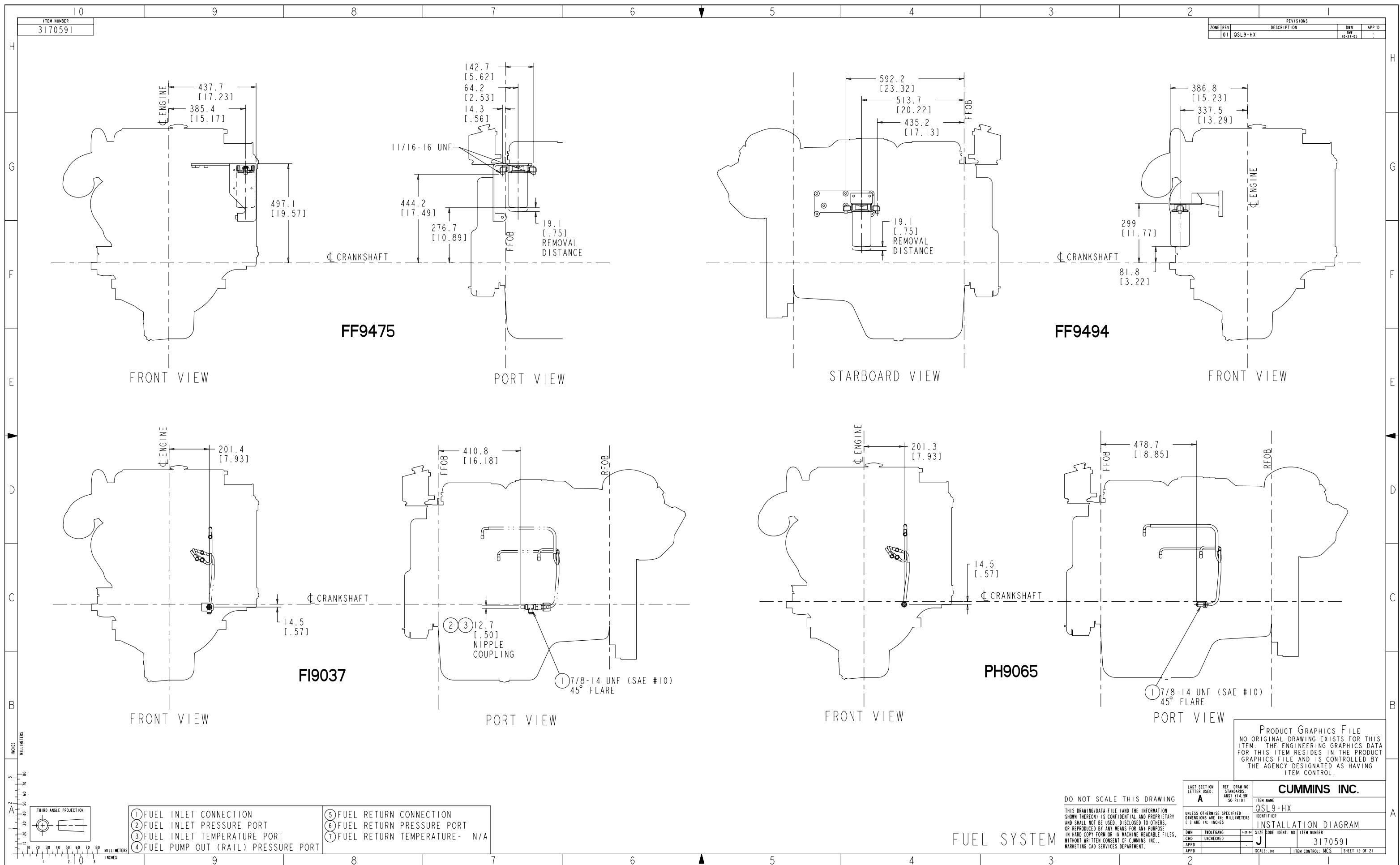
DO NOT SCALE THIS DRAWING

THIS DRAWING/DATA FILE (AND THE INFORMATION SHOWN THEREON) IS CONFIDENTIAL AND PROPRIETARY AND SHALL NOT BE USED, DISCLOSED TO OTHERS, OR REPRODUCED BY ANY MEANS FOR ANY PURPOSE IN HARD COPY FORM OR IN MACHINE READABLE FILES WITHOUT WRITTEN CONSENT OF CUMMINS INC., MARKETING CAD SERVICES DEPARTMENT.

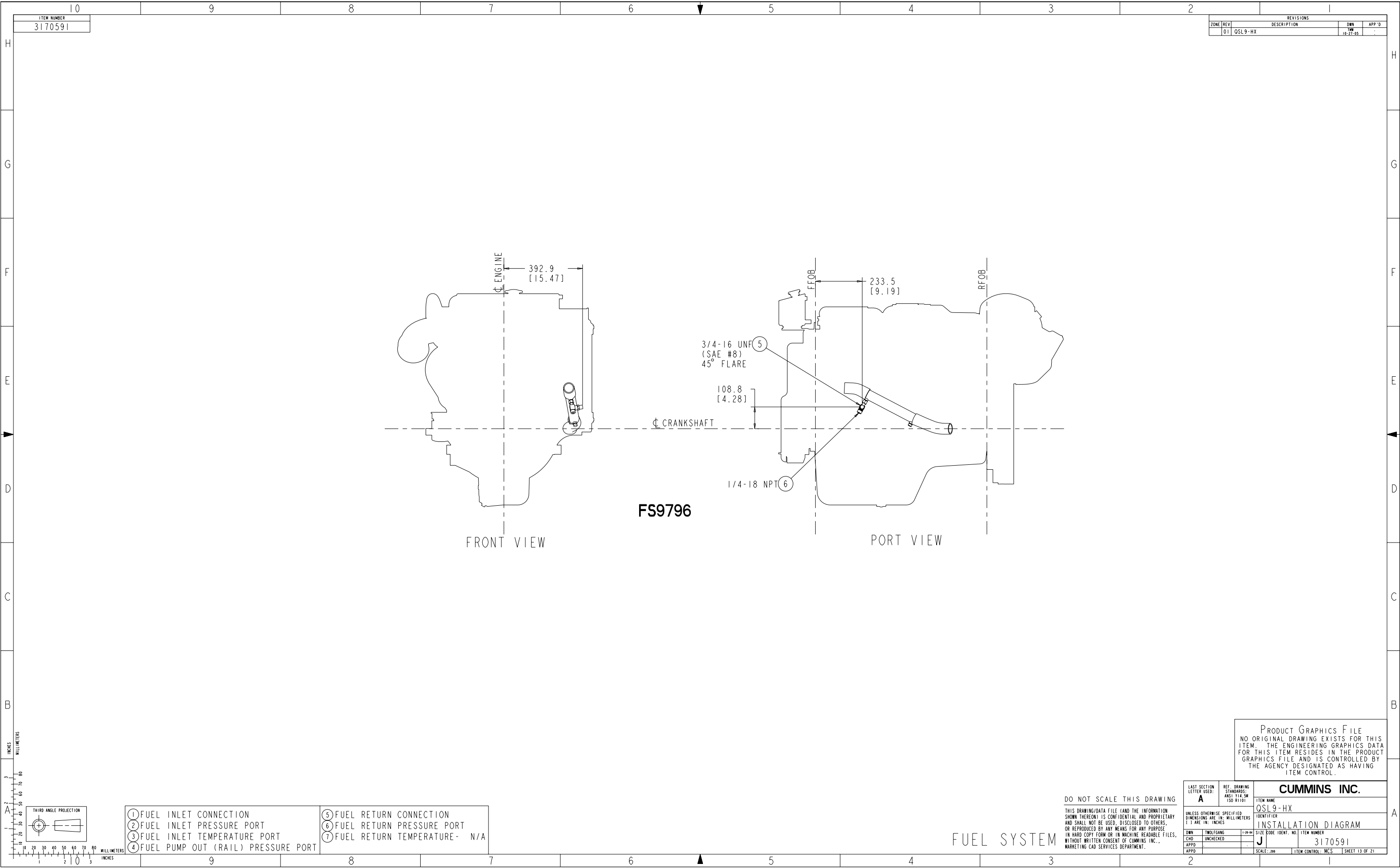


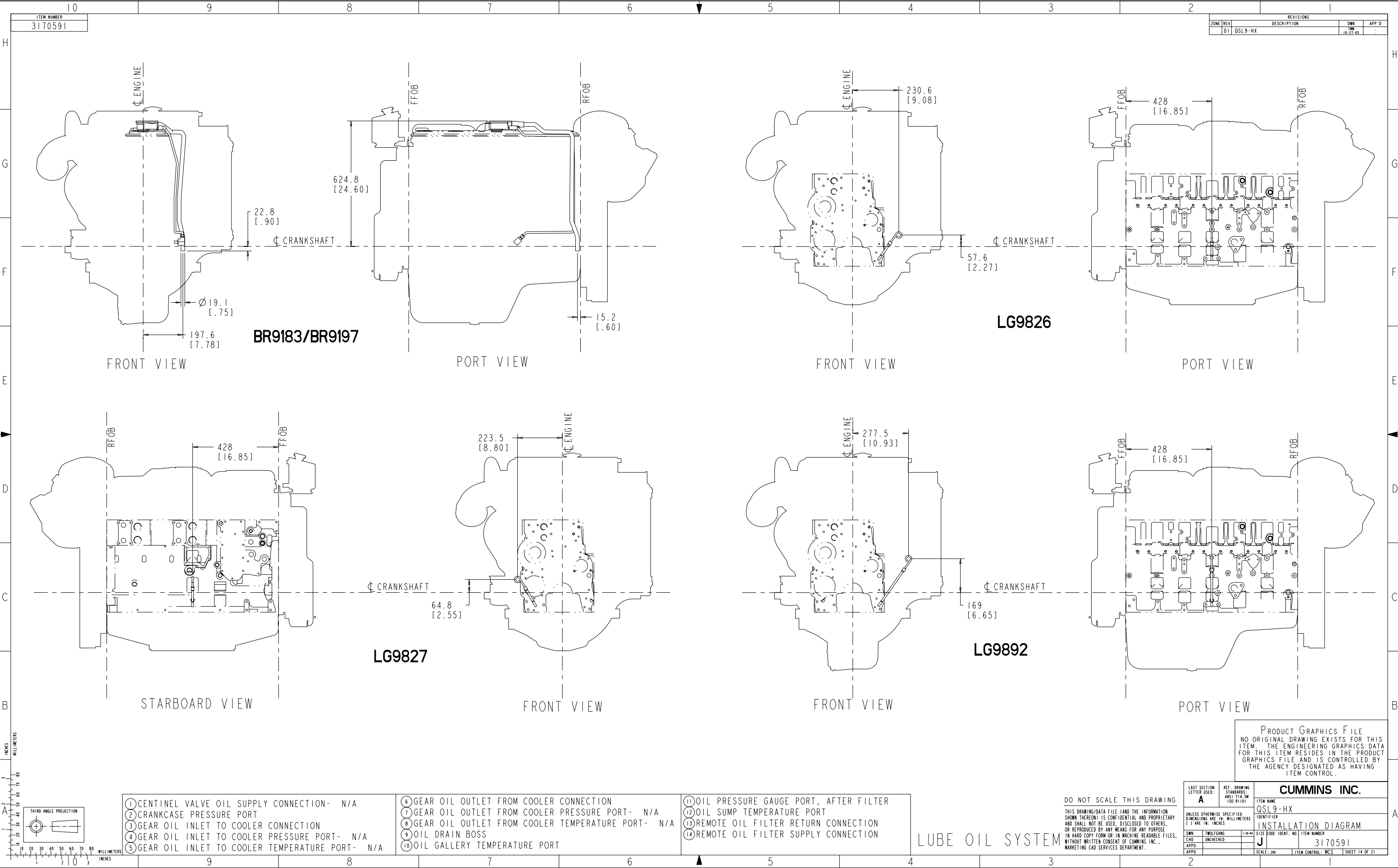


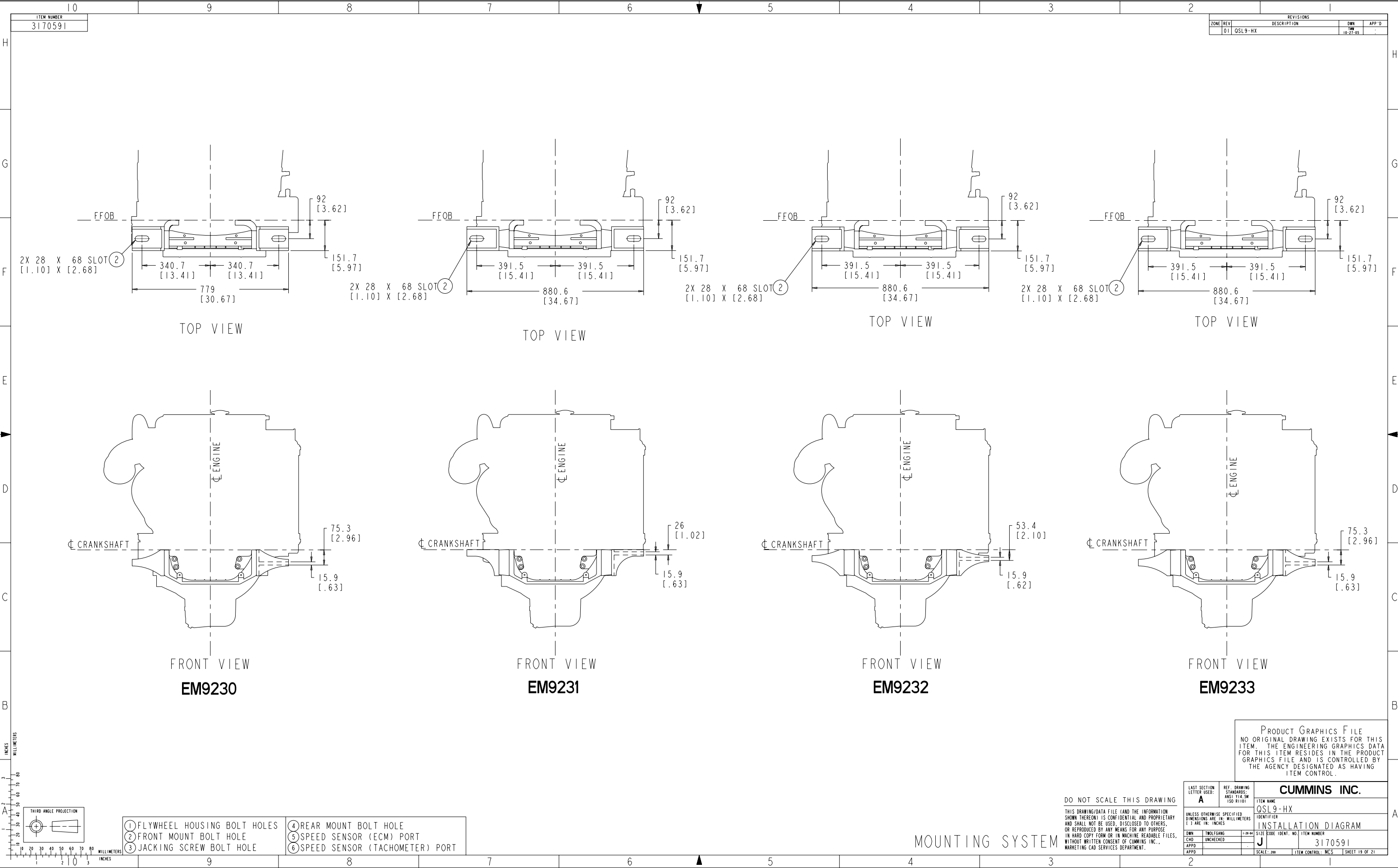


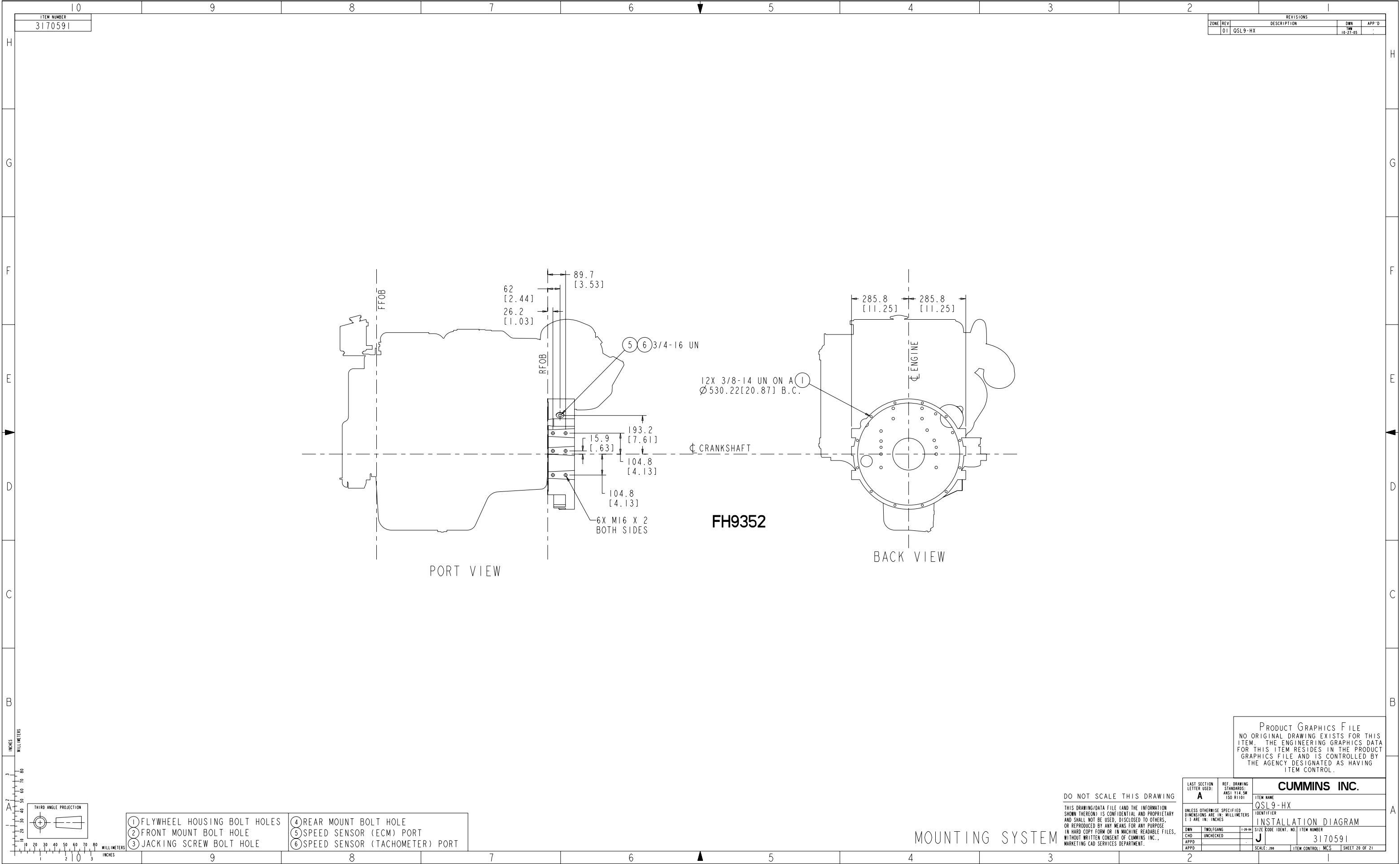


FUEL SYSTEM









MOUNTING SYSTEM

DO NOT SCALE THIS DRAWING

THIS DRAWING/DATA FILE (AND THE INFORMATION SHOWN THEREON) IS CONFIDENTIAL AND PROPRIETARY AND SHALL NOT BE USED, DISCLOSED TO OTHERS, OR REPRODUCED BY ANY MEANS FOR ANY PURPOSE IN HARD COPY FORM OR IN MACHINE READABLE FILES, WITHOUT WRITTEN CONSENT OF CUMMINS INC., MARKETING CAD SERVICES DEPARTMENT.

