



SEAFIRST

Seafirst SHP Series Helm Pump Features

The designs of our pumps are uncompromising with engineering features typically only found in much larger and more expensive units. Simple and efficient, our two-line system does not require "pressurized air" to operate, and features a precision-made, ultra smooth, non-pulsating axial piston pump design, with a roller-bearing squash plate. These pumps easily adapt to most any non-power-steered vessel from 18 to 70 ft in both recreational and commercial applications.

Hydraulic Valve Block---Extra Heavy Duty Aluminum billet machined valve block with standard 1/4" NPT threads allow simple and easy connections to hydraulic lines. No "funny" adapters needed or prone-to-crack "pot-metal" castings. All pumps have a built-in internal relief valve for total system protection.

Output Ports---Unique dual outputs that allow simple two-station and/or autopilot hook-up eliminating an external "T".

Lock-Valves---Built-in Hydraulic lock valve allows any number of stations with automatic station change-over and eliminate unwanted rudder feedback.

Pump Shaft---Oversized 22mm diameter stress relieved non-magnetic Stainless Steel in both standard and extended lengths. Industry standard 3/4" steering wheel taper w/ common straight key design. No more lost woodruff keys and allows easy sleeve adaptation to 1" bored steering wheels (available Seafirst adapter).

Pump Shaft Seal--- Externally replaceable industry standard double lip oil seal.

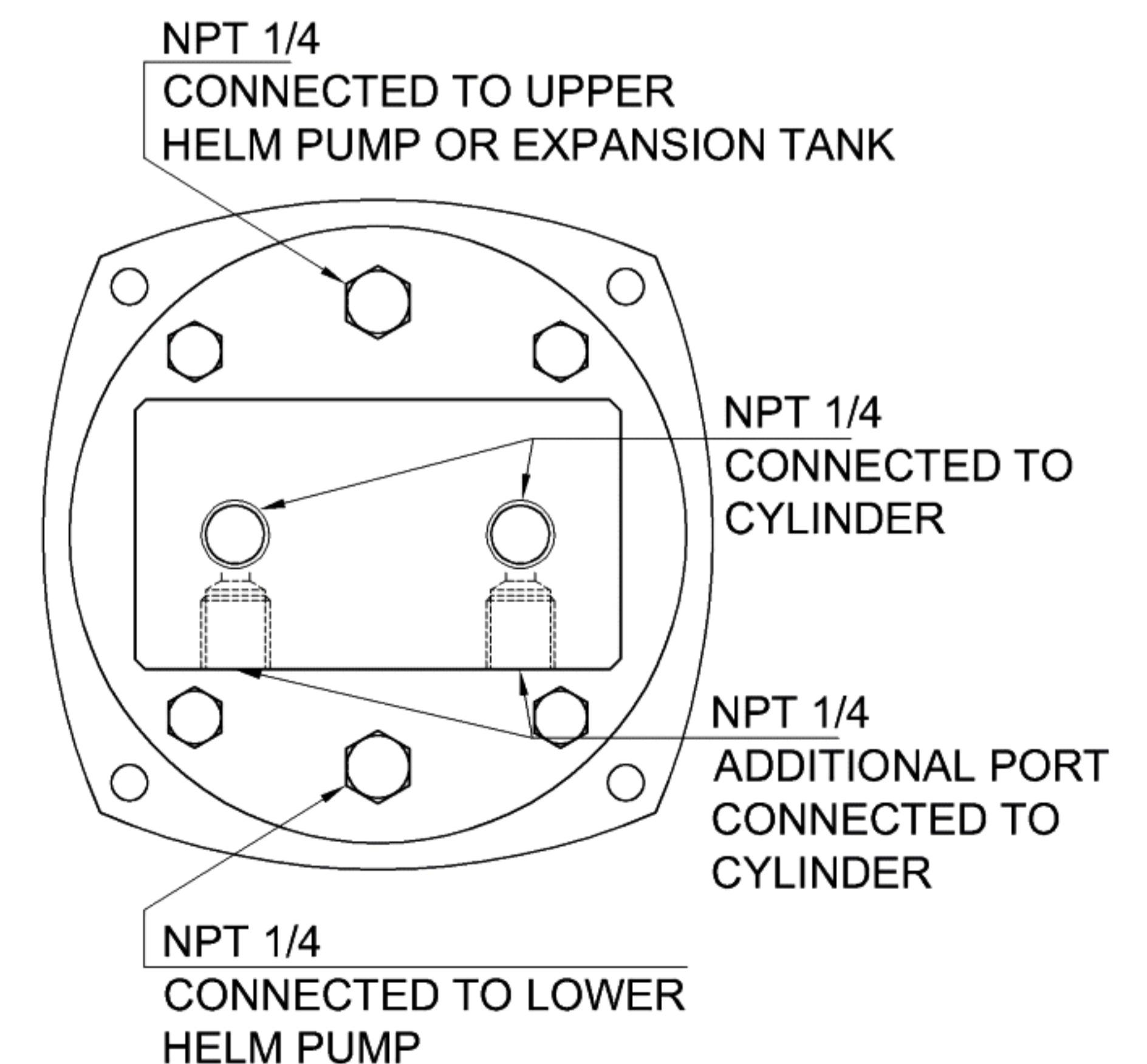
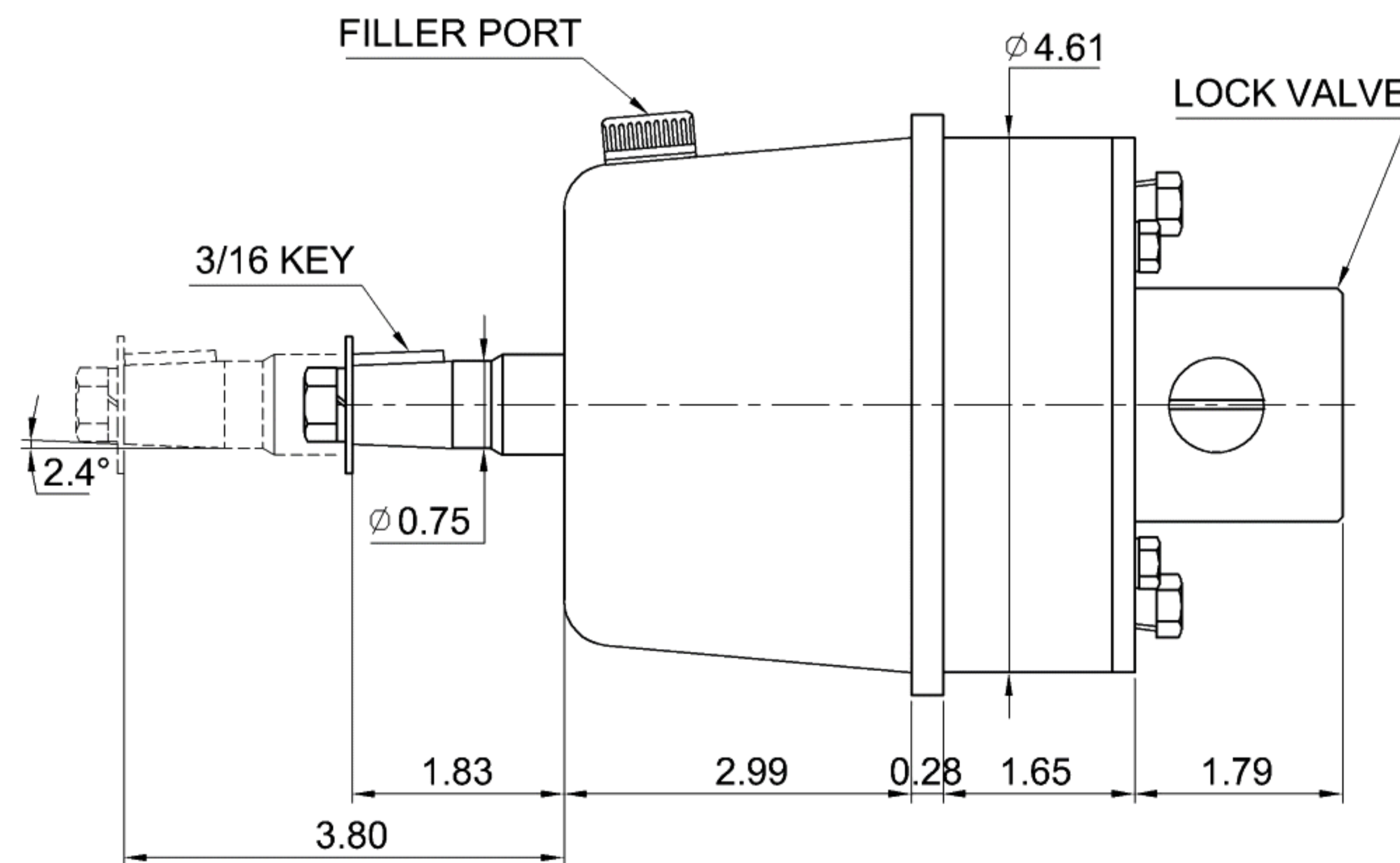
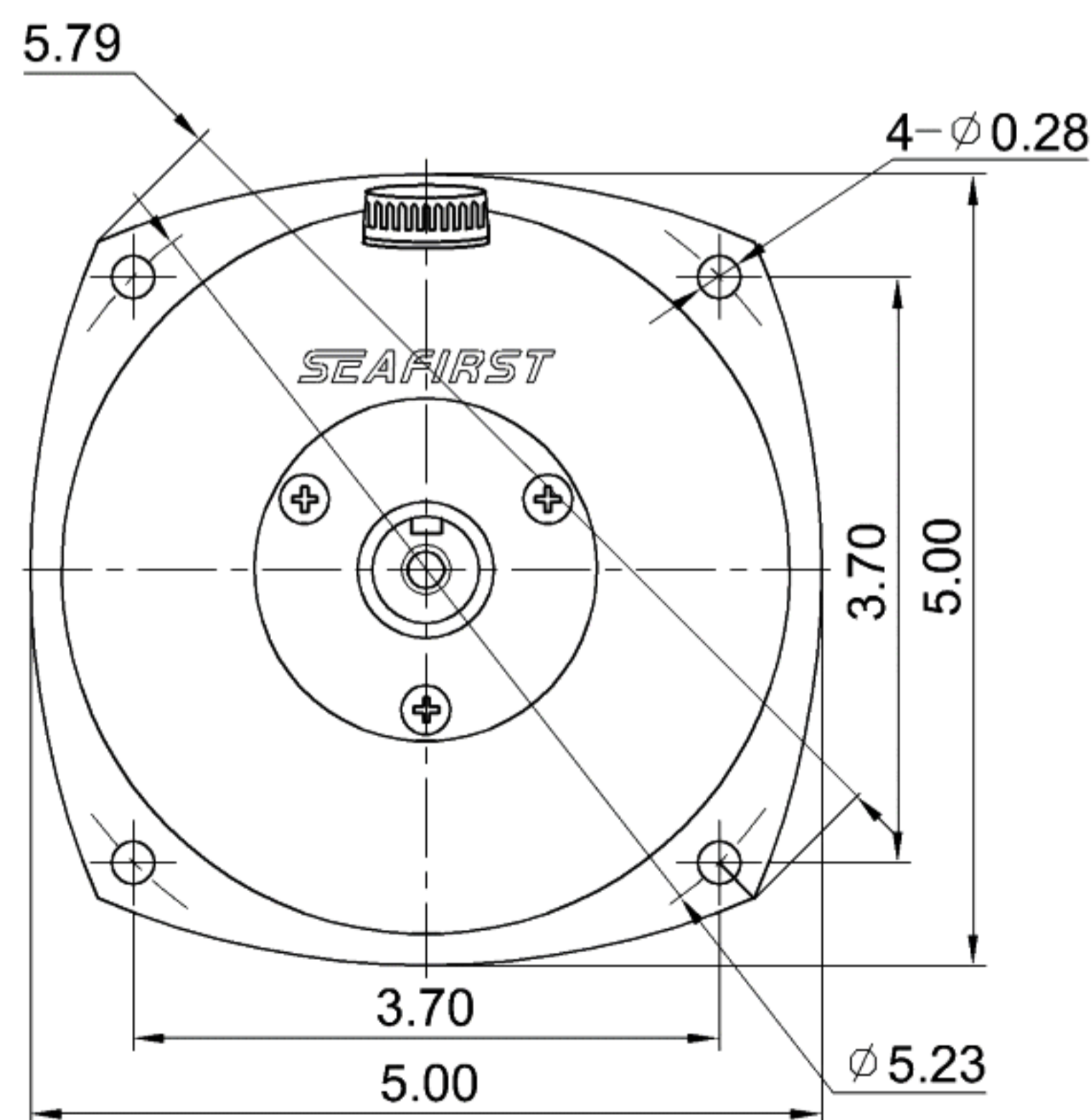
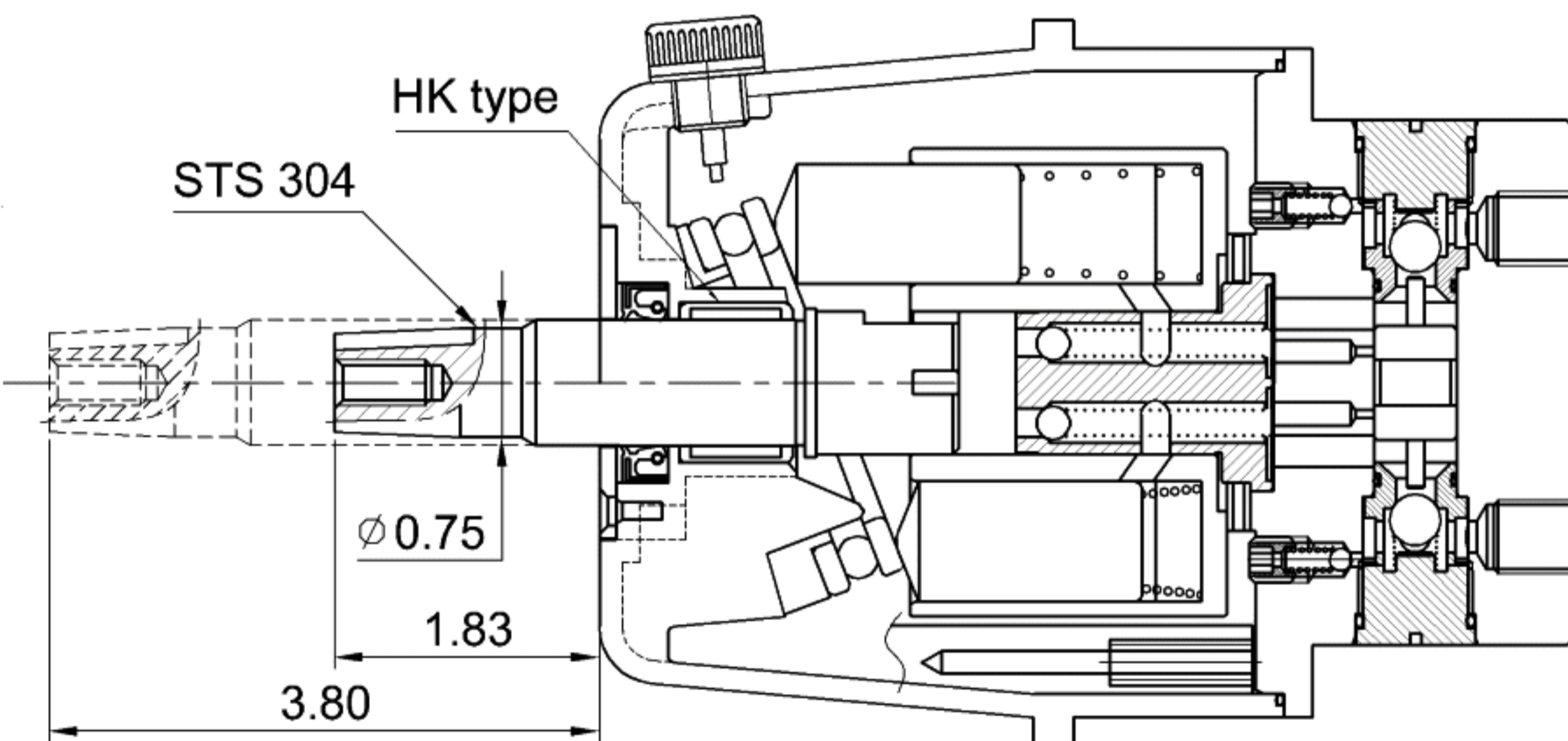
Bearings---Unique needle roller bearing support for steering shaft only seen in much larger pumps or more expensive designs.

Housing design---"O-ringed" sealed case w/ large built-in reservoir. Vented and non-vented caps allowing horizontal or vertical mountings, multiple upper & lower stations, and remote reservoirs (if desired), with no gaskets to leak or deteriorate.

Case Material---Made from LUMID GP-2330A --An Engineering Grade Glass Reinforced Copolymer developed by LG Chemical Corporation. Impervious to saltwater environment with no more bubbling coatings or corroding pot metal cases.

Hydraulic Oil--- Multiple fluid compatibility as SEAFIRST pumps operate on both Dextron ATF or other common hydraulic, aviation, or steering oils meeting MIL-H-5056. We recommend ATF for hot climates and the lighter Mil-Spec oils for colder climates. Mixing these oils is a non-issue with all Seafirst pumps or hydraulic cylinders.

SEAFIRST Helm Pumps		
MODEL	DISPLACEMENT	
SHP-026 or (-long)	26cc/rev	1.6cu.in./rev
SHP-030 or (-long)	30cc/rev	1.8cu.in./rev
SHP-035 or (-long)	35cc/rev	2.0cu.in./rev
SHP-040 or (-long)	40cc/rev	2.4cu.in./rev
SHP-045 or (-long)	45cc/rev	2.7cu.in./rev
SHP-050 or (-long)	50cc/rev	3.0cu.in./rev



Distributed through SEABOARD MARINE / Oxnard, CA, USA & other select marine distributors and dealers

805-382-6287 tony@sbmar.com http://www.sbmar.com